

Anti-PRDM15 antibody ab69206

1 [References](#) **2** [画像数](#)

製品の概要

| | |
|--------------|---|
| 製品名 | Anti-PRDM15 antibody |
| 製品の詳細 | Mouse polyclonal to PRDM15 |
| 由来種 | Mouse |
| アプリケーション | 適用あり: WB, ICC/IF |
| 種交差性 | 交差種: Human |
| 免疫原 | Recombinant full length protein within Human PRDM15. The exact immunogen sequence used to generate this antibody is proprietary information. If additional detail on the immunogen is needed to determine the suitability of the antibody for your needs, please contact our Scientific Support team to discuss your requirements. |
| ポジティブ・コントロール | PRDM15 transfected 293T cell lysate |
| 特記事項 | <p>The Life Science industry has been in the grips of a reproducibility crisis for a number of years. Abcam is leading the way in addressing this with our range of recombinant monoclonal antibodies and knockout edited cell lines for gold-standard validation. Please check that this product meets your needs before purchasing.</p> <p>If you have any questions, special requirements or concerns, please send us an inquiry and/or contact our Support team ahead of purchase. Recommended alternatives for this product can be found below, along with publications, customer reviews and Q&As</p> |

製品の特性

| | |
|--------|---|
| 製品の状態 | Liquid |
| 保存方法 | Shipped at 4°C. Upon delivery aliquot and store at -20°C or -80°C. Avoid repeated freeze / thaw cycles. |
| バッファー | pH: 7.40 Constituent: 100% PBS |
| 精製度 | Protein G purified |
| ポリ/モノ | ポリクローナル |
| アイソタイプ | IgG |

アプリケーション

The Abpromise guarantee

Abpromise保証は、次のテスト済みアプリケーションにおけるab69206の使用に適用されます

アプリケーションノートには、推奨の開始希釈率がありますが、適切な希釈率につきましてはご検討ください。

| アプリケーション | Abreviews | 特記事項 |
|----------|-----------|--|
| WB | | 1/500 - 1/1000. Detects a band of approximately 169 kDa (predicted molecular weight: 169 kDa). |
| ICC/IF | | Use a concentration of 10 µg/ml. |

ターゲット情報

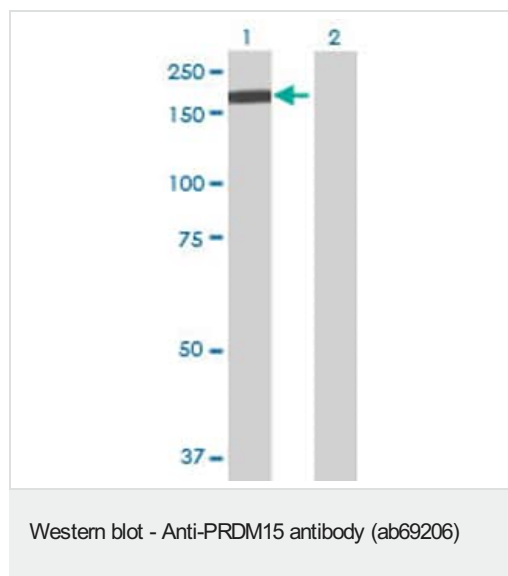
関連性

PRDM15 contains sixteen C2H2-type zinc fingers and one SET domain. It may be involved in transcriptional regulation.

細胞内局在

Nucleus

画像



All lanes : Anti-PRDM15 antibody (ab69206) at 1/500 dilution

Lane 1 : PRDM15 transfected 293T cell lysate

Lane 2 : Non-transfected 293T cell lysate

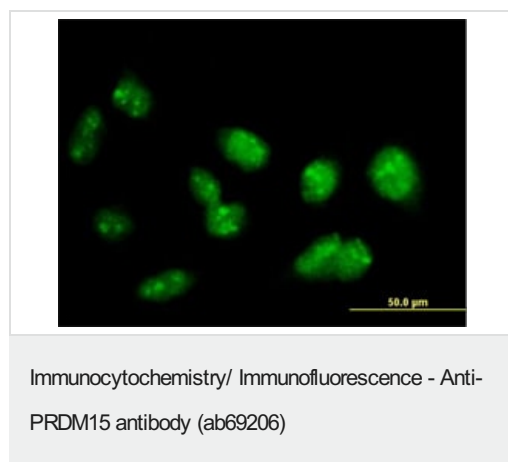
Lysates/proteins at 25 µg per lane.

Secondary

All lanes : Goat Anti-Mouse IgG (H&L)-HRP Conjugate at 1/2500 dilution

Predicted band size: 169 kDa

Observed band size: 169 kDa



ab69206 at 10µg/ml staining PRDM15 in human Hela cells by ICC/IF.

Please note: All products are "FOR RESEARCH USE ONLY. NOT FOR USE IN DIAGNOSTIC PROCEDURES"

Our Abpromise to you: Quality guaranteed and expert technical support

- Replacement or refund for products not performing as stated on the datasheet
- Valid for 12 months from date of delivery
- Response to your inquiry within 24 hours

- We provide support in Chinese, English, French, German, Japanese and Spanish
- Extensive multi-media technical resources to help you
- We investigate all quality concerns to ensure our products perform to the highest standards

If the product does not perform as described on this datasheet, we will offer a refund or replacement. For full details of the Abpromise, please visit <https://www.abcam.co.jp/abpromise> or contact our technical team.

Terms and conditions

- Guarantee only valid for products bought direct from Abcam or one of our authorized distributors