

# Anti-PPTC7 antibody ab122548

**1 References** [画像数 7](#)

### 製品の概要

---

製品名	Anti-PPTC7 antibody
製品の詳細	Rabbit polyclonal to PPTC7
由来種	Rabbit
アプリケーション	<b>適用あり:</b> IHC-P, WB, ICC/IF
種交差性	<b>交差種:</b> Mouse, Rat, Human
免疫原	amino acids 118-215 (ILTTSYCELL QNKVPLLGSS TACIVLDRT SHRLHTANLG DSGFLVVRGG EVVHRSDEQQ HYFNTPFQLS IAPPEAEGVV LSDSPDAADS TSFDVQL) of the Human PPTC7 protein (Q8NI37). <a href="#">Run BLAST with ExpASY</a> <a href="#">Run BLAST with NCBI</a>
ポジティブ・コントロール	IHC-P: Human testis, rectum, liver and kidney tissue. WB: RT-4, U-251 MG, NIH-3T3, NBT-II. ICC/IF: A-431 cells.
特記事項	<p>The Life Science industry has been in the grips of a reproducibility crisis for a number of years. Abcam is leading the way in addressing this with our range of recombinant monoclonal antibodies and knockout edited cell lines for gold-standard validation. Please check that this product meets your needs before purchasing.</p> <p>If you have any questions, special requirements or concerns, please send us an inquiry and/or contact our Support team ahead of purchase. Recommended alternatives for this product can be found below, along with publications, customer reviews and Q&amp;As</p>

### 製品の特性

---

製品の状態	Liquid
保存方法	Shipped at 4°C. Upon delivery aliquot and store at -20°C. Avoid freeze / thaw cycles.
バッファー	pH: 7.20 Preservative: 0.02% Sodium azide Constituents: 59% PBS, 40% Glycerol (glycerin, glycerine)
精製度	Immunogen affinity purified
ポリ/モノ	ポリクローナル
アイソタイプ	IgG

## アプリケーション

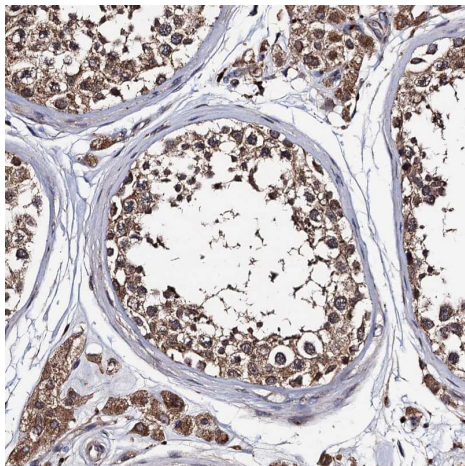
**The Abpromise guarantee** **Abpromise保証は、** 次のテスト済みアプリケーションにおけるab122548の使用に適用されます  
アプリケーションノートには、推奨の開始希釈率がありますが、適切な希釈率につきましてはご検討ください。

アプリケーション	Abreviews	特記事項
IHC-P		1/200 - 1/500. Perform heat mediated antigen retrieval with citrate buffer pH 6 before commencing with IHC staining protocol.
WB		Use a concentration of 0.04 - 0.4 µg/ml.
ICC/IF		Use a concentration of 0.25 - 2 µg/ml.

## ターゲット情報

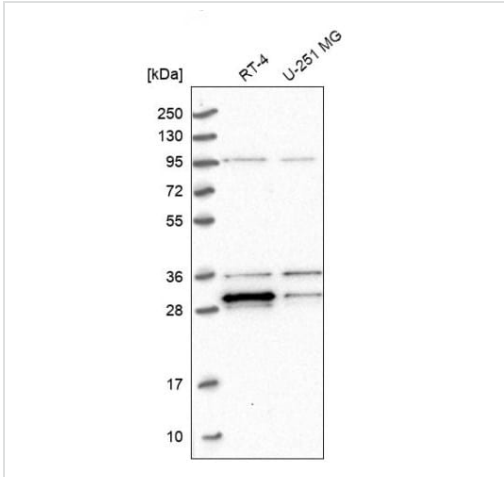
**配列類似性** Belongs to the PP2C family.  
Contains 1 PP2C-like domain.

## 画像



Immunohistochemical analysis of formalin-fixed, paraffin-embedded human testis tissue labeling PPTC7 with ab122548 at a 1/500 dilution.

Immunohistochemistry (Formalin/PFA-fixed paraffin-embedded sections) - Anti-PPTC7 antibody (ab122548)

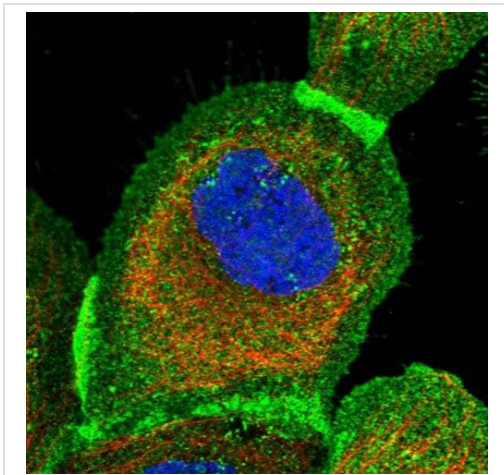


Western blot - Anti-PPTC7 antibody (ab122548)

**All lanes :** Anti-PPTC7 antibody (ab122548) at 0.4  $\mu\text{g/ml}$

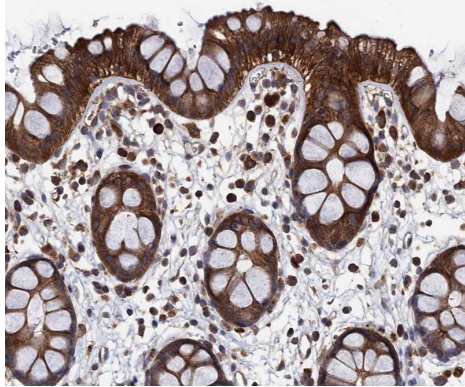
**Lane 1 :** RT4 Cell lysate

**Lane 2 :** U 251 MG Cell lysate



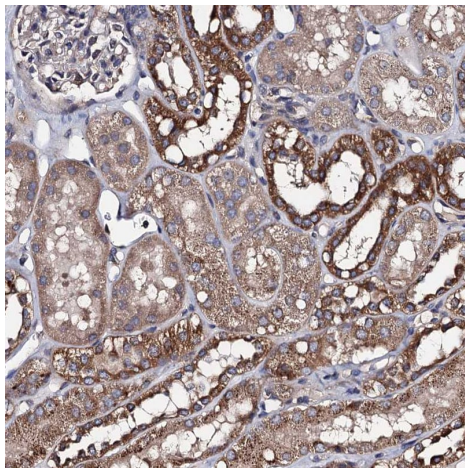
Immunocytochemistry/ Immunofluorescence - Anti-PPTC7 antibody (ab122548)

Immunofluorescent staining of Human cell line A-431 shows positivity in nucleus but not nucleoli, plasma membrane and cytoplasm. Recommended concentration of ab122548 1-4  $\mu\text{g/ml}$ . Cells treated with PFA/Triton X-100.



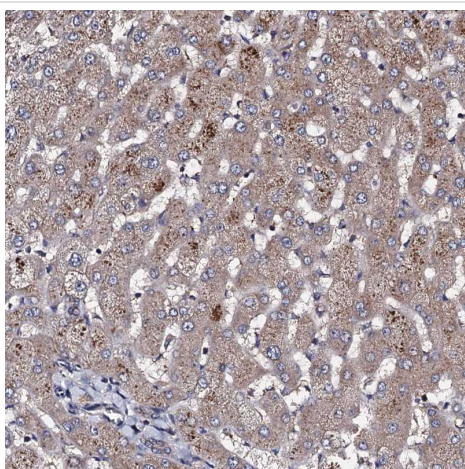
Immunohistochemical analysis of formalin-fixed, paraffin-embedded human rectum tissue labeling PPTC7 with ab122548 at a 1/500 dilution.

Immunohistochemistry (Formalin/PFA-fixed paraffin-embedded sections) - Anti-PPTC7 antibody (ab122548)



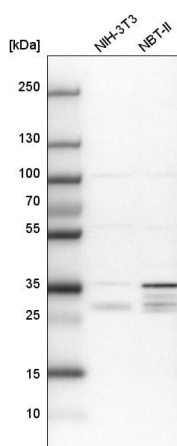
Immunohistochemical analysis of formalin-fixed, paraffin-embedded human kidney tissue labeling PPTC7 with ab122548 at a 1/500 dilution.

Immunohistochemistry (Formalin/PFA-fixed paraffin-embedded sections) - Anti-PPTC7 antibody (ab122548)



Immunohistochemical analysis of formalin-fixed, paraffin-embedded human liver tissue labeling PPTC7 with ab122548 at a 1/500 dilution.

Immunohistochemistry (Formalin/PFA-fixed paraffin-embedded sections) - Anti-PPTC7 antibody (ab122548)



**All lanes** : Anti-PPTC7 antibody (ab122548) at 0.4 µg/ml

**Lane 1** : NIH-3T3 cell lysate

**Lane 2** : NBT-II cell lysate

Western blot - Anti-PPTC7 antibody (ab122548)

**Please note:** All products are "FOR RESEARCH USE ONLY. NOT FOR USE IN DIAGNOSTIC PROCEDURES"

### Our Promise to you: Quality guaranteed and expert technical support

- Replacement or refund for products not performing as stated on the datasheet
- Valid for 12 months from date of delivery
- Response to your inquiry within 24 hours
- We provide support in Chinese, English, French, German, Japanese and Spanish

- Extensive multi-media technical resources to help you
- We investigate all quality concerns to ensure our products perform to the highest standards

If the product does not perform as described on this datasheet, we will offer a refund or replacement. For full details of the Abpromise, please visit <https://www.abcam.co.jp/abpromise> or contact our technical team.

### **Terms and conditions**

---

- Guarantee only valid for products bought direct from Abcam or one of our authorized distributors