

Anti-PPP2R5A antibody ab89621

★★★★★ [3 Abreviews](#) [4 References](#) [画像数 3](#)

製品の概要

製品名	Anti-PPP2R5A antibody
製品の詳細	Mouse polyclonal to PPP2R5A
由来種	Mouse
アプリケーション	適用あり: WB
種交差性	交差種: Human
免疫原	Recombinant full length protein within Human PPP2R5A. The exact immunogen sequence used to generate this antibody is proprietary information. If additional detail on the immunogen is needed to determine the suitability of the antibody for your needs, please contact our Scientific Support team to discuss your requirements.
ポジティブ・コントロール	Human placenta tissue lysate Jurkat cell lysate Transfected 293T cell lysate
特記事項	<p>The Life Science industry has been in the grips of a reproducibility crisis for a number of years. Abcam is leading the way in addressing this with our range of recombinant monoclonal antibodies and knockout edited cell lines for gold-standard validation. Please check that this product meets your needs before purchasing.</p> <p>If you have any questions, special requirements or concerns, please send us an inquiry and/or contact our Support team ahead of purchase. Recommended alternatives for this product can be found below, along with publications, customer reviews and Q&As</p>

製品の特性

製品の状態	Liquid
保存方法	Shipped at 4°C. Upon delivery aliquot and store at -20°C or -80°C. Avoid repeated freeze / thaw cycles.
バッファー	pH: 7.40 Constituent: 100% PBS
精製度	Protein A purified
ポリ/モノ	ポリクローナル
アイソタイプ	IgG

アプリケーション

The Abpromise guarantee

Abpromise保証は、次のテスト済みアプリケーションにおけるab89621の使用に適用されます

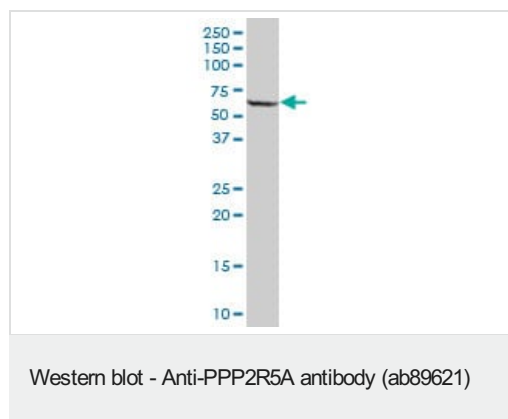
アプリケーションノートには、推奨の開始希釈率がありますが、適切な希釈率につきましてはご検討ください。

アプリケーション	Abreviews	特記事項
WB	★★★★★ (2)	Use a concentration of 1 µg/ml. Predicted molecular weight: 56 kDa.

ターゲット情報

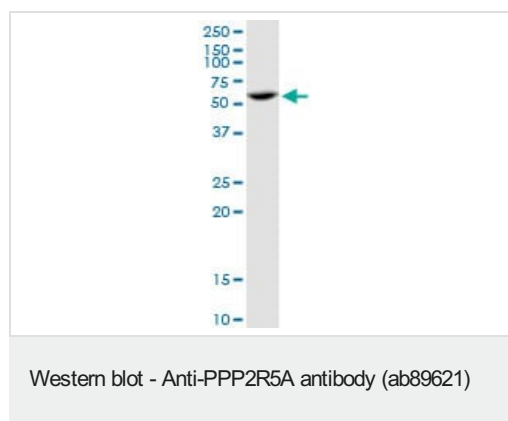
機能	The B regulatory subunit might modulate substrate selectivity and catalytic activity, and also might direct the localization of the catalytic enzyme to a particular subcellular compartment.
組織特異性	Widely expressed with the highest expression in heart and skeletal muscle.
配列類似性	Belongs to the phosphatase 2A regulatory subunit B56 family.
翻訳後修飾	Phosphorylated on serine residues.
細胞内局在	Cytoplasm. Nucleus. Chromosome > centromere. From mitotic prophase to metaphase, localizes at the inner centromere between a pair of sister kinetochores. Decreased expression at the onset of anaphase.

画像



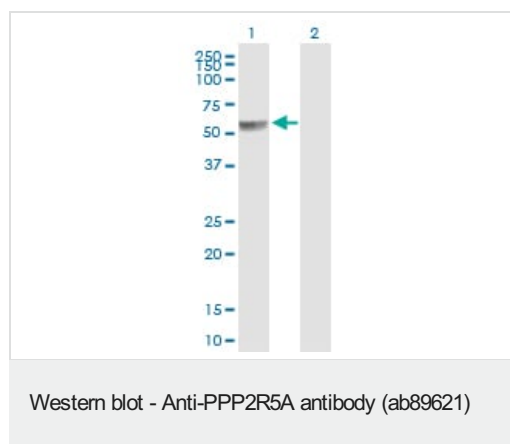
Anti-PPP2R5A antibody (ab89621) at 1 µg/ml + Human placenta tissue lysate at 50 µg

Predicted band size: 56 kDa



Anti-PPP2R5A antibody (ab89621) at 1 µg/ml + Jurkat cell lysate at 50 µg

Predicted band size: 56 kDa



All lanes : Anti-PPP2R5A antibody (ab89621) at 1 µg/ml

Lane 1 : PPP2R5A transfected 293T cell lysate

Lane 2 : Untransfected 293T cell lysate

Lysates/proteins at 25 µg per lane.

Predicted band size: 56 kDa

Observed band size: 53 kDa

Please note: All products are "FOR RESEARCH USE ONLY. NOT FOR USE IN DIAGNOSTIC PROCEDURES"

Our Abpromise to you: Quality guaranteed and expert technical support

- Replacement or refund for products not performing as stated on the datasheet
- Valid for 12 months from date of delivery
- Response to your inquiry within 24 hours
- We provide support in Chinese, English, French, German, Japanese and Spanish
- Extensive multi-media technical resources to help you
- We investigate all quality concerns to ensure our products perform to the highest standards

If the product does not perform as described on this datasheet, we will offer a refund or replacement. For full details of the Abpromise, please visit <https://www.abcam.co.jp/abpromise> or contact our technical team.

Terms and conditions

- Guarantee only valid for products bought direct from Abcam or one of our authorized distributors