


# Anti-PPP2R3B antibody ab72027

画像数 2

### 製品の概要

製品名	Anti-PPP2R3B antibody
製品の詳細	Rabbit polyclonal to PPP2R3B
由来種	Rabbit
アプリケーション	<b>適用あり:</b> WB, IP
種交差性	<b>交差種:</b> Human <b>交差が予測される動物種:</b> Rhesus monkey, Gorilla, Orangutan 
免疫原	Synthetic peptide from a region between residue 350 and 400 of human PPP2R3B, NP_037371.2.
ポジティブ・コントロール	Whole cell lysate from Hela and 293T cells.
特記事項	<p>The Life Science industry has been in the grips of a reproducibility crisis for a number of years. Abcam is leading the way in addressing this with our range of recombinant monoclonal antibodies and knockout edited cell lines for gold-standard validation. Please check that this product meets your needs before purchasing.</p> <p>If you have any questions, special requirements or concerns, please send us an inquiry and/or contact our Support team ahead of purchase. Recommended alternatives for this product can be found below, along with publications, customer reviews and Q&amp;As</p>

### 製品の特性

製品の状態	Liquid
保存方法	Shipped at 4°C. Upon delivery aliquot and store at -20°C. Avoid freeze / thaw cycles.
バッファー	pH: 7 Preservative: 0.09% Sodium azide Constituents: 1.815% Tris, 1.764% Sodium citrate, 0.021% PBS
精製度	Immunogen affinity purified
ポリ/モノ	ポリクローナル
アイソタイプ	IgG

### アプリケーション

**The Abpromise guarantee**      Abpromise保証は、次のテスト済みアプリケーションにおけるab72027の使用に適用されます  
アプリケーションノートには、推奨の開始希釈率がありますが、適切な希釈率につきましてはご確認ください。

アプリケーション	Abreviews	特記事項
WB		
IP		

**追加情報**

IP: Use at 2-5µg/mg of lysate.  
WB: 1/2000 - 1/10000. Detects bands of approximately 65 and 200 kDa (predicted molecular weight: 65 kDa).

Not yet tested in other applications.  
Optimal dilutions/concentrations should be determined by the end user.

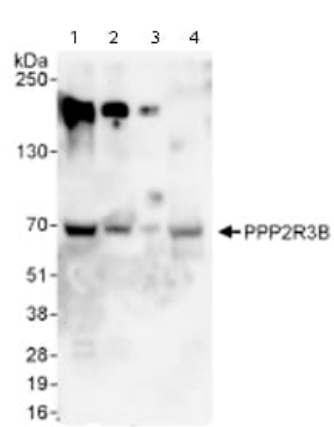
**ターゲット情報**

**機能**      The B regulatory subunit might modulate substrate selectivity and catalytic activity, and also might direct the localization of the catalytic enzyme to a particular subcellular compartment.

**配列類似性**      Contains 1 EF-hand domain.

**細胞内局在**      Nucleus.

**画像**

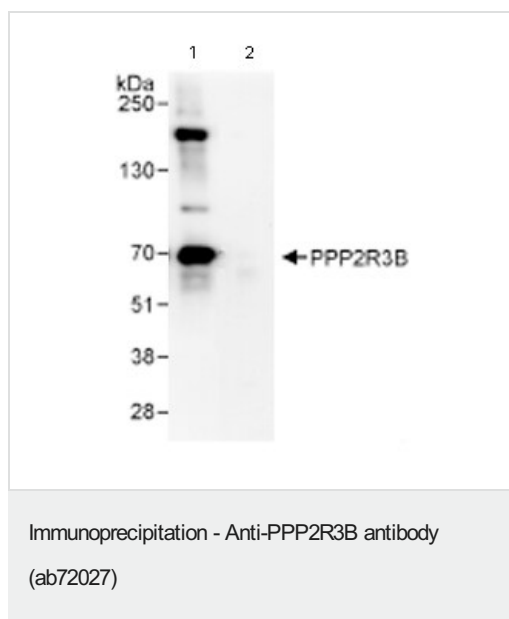


Western blot - Anti-PPP2R3B antibody (ab72027)

**All lanes :** Anti-PPP2R3B antibody (ab72027) at 0.1 µg/ml

**Lane 1 :** Whole cell lysate from HeLa cells at 50 µg  
**Lane 2 :** Whole cell lysate from HeLa cells at 15 µg  
**Lane 3 :** Whole cell lysate from HeLa cells at 5 µg  
**Lane 4 :** Whole cell lysate from 293T cells at 50 µg

**Predicted band size:** 65 kDa  
**Observed band size:** 65 kDa  
**Additional bands at:** 200 kDa. We are unsure as to the identity of these extra bands.



Immunoprecipitation/ Western Blot of PPP2R3B.

Lane 1: ab72027 at 3 $\mu$ g/mg whole cell lysate.

Lane 2: Control IgG.

Whole cell lysate from Hela cells at 1mg for IP, 20% of IP loaded.

For western blot detection step ab72027 was used at 1  $\mu$ g/ml.

Chemiluminescence with an exposure time of 30 seconds.

**Please note:** All products are "FOR RESEARCH USE ONLY. NOT FOR USE IN DIAGNOSTIC PROCEDURES"

### Our Abpromise to you: Quality guaranteed and expert technical support

- Replacement or refund for products not performing as stated on the datasheet
- Valid for 12 months from date of delivery
- Response to your inquiry within 24 hours
- We provide support in Chinese, English, French, German, Japanese and Spanish
- Extensive multi-media technical resources to help you
- We investigate all quality concerns to ensure our products perform to the highest standards

If the product does not perform as described on this datasheet, we will offer a refund or replacement. For full details of the Abpromise, please visit <https://www.abcam.co.jp/abpromise> or contact our technical team.

### Terms and conditions

- Guarantee only valid for products bought direct from Abcam or one of our authorized distributors