


Anti-PPP2R1A antibody ab154551

★★★★★ **1 Abreviews** **2 References** **画像数 4**

製品の概要

製品名	Anti-PPP2R1A antibody
製品の詳細	Rabbit polyclonal to PPP2R1A
由来種	Rabbit
アプリケーション	適用あり: WB, ICC/IF, IHC-P
種交差性	交差種: Mouse, Human 交差が予測される動物種: Rat, Cow, Pig, Zebrafish, Xenopus tropicalis 
免疫原	Recombinant fragment corresponding to a region within amino acids 308-589 of PPP2R1A (Uniprot ID P30153)
ポジティブ・コントロール	HeLa, NIH-3T3, JC, BCL-1 whole cell lysate; HeLa cells; U87 xenograft
特記事項	<p>The Life Science industry has been in the grips of a reproducibility crisis for a number of years. Abcam is leading the way in addressing this with our range of recombinant monoclonal antibodies and knockout edited cell lines for gold-standard validation. Please check that this product meets your needs before purchasing.</p> <p>If you have any questions, special requirements or concerns, please send us an inquiry and/or contact our Support team ahead of purchase. Recommended alternatives for this product can be found below, along with publications, customer reviews and Q&As</p>

製品の特性

製品の状態	Liquid
保存方法	Shipped at 4°C. Upon delivery aliquot. Store at -20°C or -80°C. Avoid freeze / thaw cycle.
バッファー	pH: 7.00 Preservative: 0.025% Proclin 300 Constituents: 79% PBS, 20% Glycerol (glycerin, glycerine)
精製度	Immunogen affinity purified
ポリ/モノ	ポリクローナル
アイソタイプ	IgG

アプリケーション

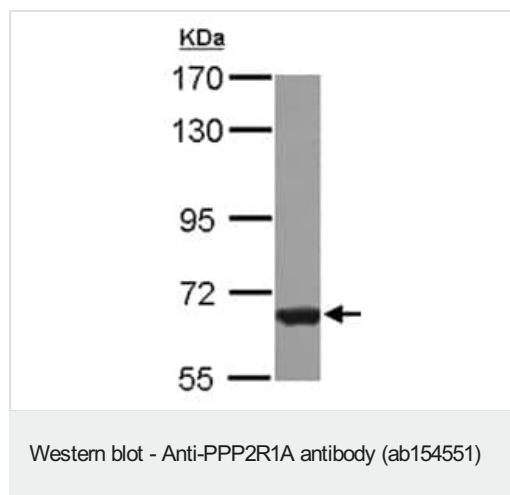
The Abpromise guarantee Abpromise保証は、 次のテスト済みアプリケーションにおけるab154551の使用に適用されます
 アプリケーションノートには、推奨の開始希釈率がありますが、適切な希釈率につきましてはご確認ください。

アプリケーション	Abreviews	特記事項
WB		1/1000 - 1/10000. Predicted molecular weight: 65 kDa.
ICC/IF	★★★★★ (1)	1/100 - 1/1000.
IHC-P		1/100 - 1/1000.

ターゲット情報

機能	The PR65 subunit of protein phosphatase 2A serves as a scaffolding molecule to coordinate the assembly of the catalytic subunit and a variable regulatory B subunit. Required for proper chromosome segregation and for centromeric localization of SGOL1 in mitosis.
配列類似性	Belongs to the phosphatase 2A regulatory subunit A family. Contains 15 HEAT repeats.
ドメイン	Each HEAT repeat appears to consist of two alpha helices joined by a hydrophilic region, the intrarepeat loop. The repeat units may be arranged laterally to form a rod-like structure.
細胞内局在	Cytoplasm. Chromosome > centromere. Centromeric localization requires the presence of BUB1.

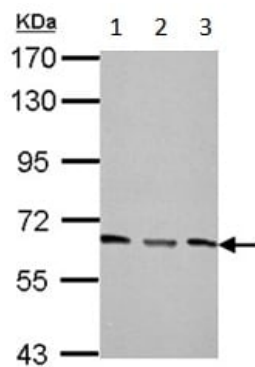
画像



Anti-PPP2R1A antibody (ab154551) at 1/1000 dilution + HeLa whole cell lysate at 30 µg

Predicted band size: 65 kDa

7.5% SDS PAGE



Western blot - Anti-PPP2R1A antibody (ab154551)

All lanes : Anti-PPP2R1A antibody (ab154551) at 1/5000 dilution

Lane 1 : NIH-3T3 whole cell lysate

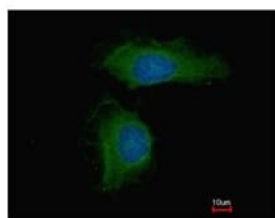
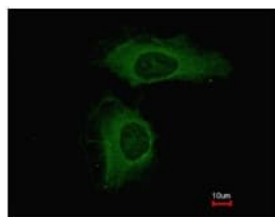
Lane 2 : JC whole cell lysate

Lane 3 : BCL-1 whole cell lysate

Lysates/proteins at 30 µg per lane.

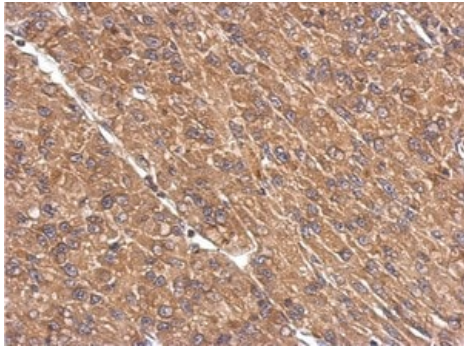
Predicted band size: 65 kDa

7.5% SDS PAGE



Immunocytochemistry/ Immunofluorescence - Anti-PPP2R1A antibody (ab154551)

Immunofluorescent analysis of methanol-fixed HeLa cells labeling PPP2R1A with ab154551 antibody at 1/500 dilution. Lower panel co-stained with Hoechst 33342.



Immunohistochemical analysis of paraffin-embedded U87 xenograft labeling PPP2R1A with ab154551 antibody at 1/500 dilution.

Immunohistochemistry (Formalin/PFA-fixed paraffin-embedded sections) - Anti-PPP2R1A antibody (ab154551)

Please note: All products are "FOR RESEARCH USE ONLY. NOT FOR USE IN DIAGNOSTIC PROCEDURES"

Our Abpromise to you: Quality guaranteed and expert technical support

- Replacement or refund for products not performing as stated on the datasheet
- Valid for 12 months from date of delivery
- Response to your inquiry within 24 hours
- We provide support in Chinese, English, French, German, Japanese and Spanish
- Extensive multi-media technical resources to help you
- We investigate all quality concerns to ensure our products perform to the highest standards

If the product does not perform as described on this datasheet, we will offer a refund or replacement. For full details of the Abpromise, please visit <https://www.abcam.co.jp/abpromise> or contact our technical team.

Terms and conditions

- Guarantee only valid for products bought direct from Abcam or one of our authorized distributors