


# Anti-PPP2CB antibody ab72343

**1** [References](#) **2** [画像数](#)

### 製品の概要

|              |   |
|--------------|---|
| 製品名          | Anti-PPP2CB antibody  |
| 製品の詳細        | Rabbit polyclonal to PPP2CB   |
| 由来種          | Rabbit  |
| アプリケーション     | <b>適用あり:</b> WB, IP   |
| 種交差性         | <b>交差種:</b> Mouse, Human<br><b>交差が予測される動物種:</b> Rat, Rabbit, Chicken, Guinea pig, Cow, Dog, Turkey, Pig, Xenopus laevis, Chimpanzee, Drosophila melanogaster, Zebrafish, Rhesus monkey, Gorilla, Orangutan, Xenopus tropicalis    |
| 免疫原          | Synthetic peptide corresponding to Human PPP2CB. Synthetic peptide from a region between residue 260 and the C-terminus (residue 309) of human PPP2CB   |
| ポジティブ・コントロール | Whole cell lysate from Hela, NIH3T3 and 293T cells.   |
| 特記事項         | <p>The Life Science industry has been in the grips of a reproducibility crisis for a number of years. Abcam is leading the way in addressing this with our range of recombinant monoclonal antibodies and knockout edited cell lines for gold-standard validation. Please check that this product meets your needs before purchasing.</p> <p>If you have any questions, special requirements or concerns, please send us an inquiry and/or contact our Support team ahead of purchase. Recommended alternatives for this product can be found below, along with publications, customer reviews and Q&amp;As</p> |

### 製品の特性

|        |  |
|--------|--|
| 製品の状態  | Liquid   |
| 保存方法   | Shipped at 4°C. Upon delivery aliquot and store at -20°C. Avoid freeze / thaw cycles.                                    |
| バッファー  | <p>pH: 7</p> <p>Preservative: 0.09% Sodium azide</p> <p>Constituents: 1.815% Tris, 1.764% Sodium citrate, 0.021% PBS</p> |
| 精製度    | Immunogen affinity purified  |
| ポリ/モノ  | ポリクローナル  |
| アイソタイプ | IgG  |

## アプリケーション

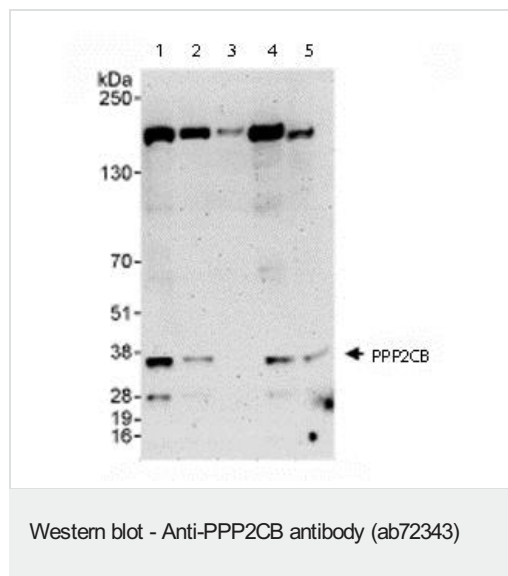
**The Abpromise guarantee**      **Abpromise保証は、** 次のテスト済みアプリケーションにおけるab72343の使用に適用されます  
アプリケーションノートには、推奨の開始希釈率がありますが、適切な希釈率につきましてはご検討ください。

| アプリケーション | Abreviews | 特記事項  |
|----------|-----------|---|
| WB       |           | 1/2000 - 1/10000. Detects a band of approximately 28, 36, 190 kDa (predicted molecular weight: 36 kDa). |
| IP       |           | Use at 2-5 µg/mg of lysate.   |

## ターゲット情報

|       |  |
|-------|--|
| 機能    | PP2A can modulate the activity of phosphorylase B kinase casein kinase 2, mitogen-stimulated S6 kinase, and MAP-2 kinase.  |
| 配列類似性 | Belongs to the PPP phosphatase family. PP-1 subfamily.   |
| 翻訳後修飾 | Reversibly methyl esterified on Leu-309. Carboxyl methylation may play a role in holoenzyme assembly. It varies during the cell cycle. Demethylated by PME 1 (in vitro).<br>Phosphorylation of either threonine (by autophosphorylation-activated protein kinase) or tyrosine results in inactivation of the phosphatase. Auto-dephosphorylation has been suggested as a mechanism for reactivation. |
| 細胞内局在 | Cytoplasm. Nucleus. Chromosome > centromere. Cytoplasm > cytoskeleton > spindle pole. In prometaphase cells, but not in anaphase cells, localizes at centromeres. During mitosis, also found at spindle poles.   |

## 画像



**All lanes :** Anti-PPP2CB antibody (ab72343) at 0.1 µg/ml

**Lane 1 :** Whole cell lysate from HeLa cells at 50 µg

**Lane 2 :** Whole cell lysate from HeLa cells at 15 µg

**Lane 3 :** Whole cell lysate from HeLa cells at 5 µg

**Lane 4 :** Whole cell lysate from 293T cells at 50 µg

**Lane 5 :** Whole cell lysate from NIH3T3 cells at 50 µg

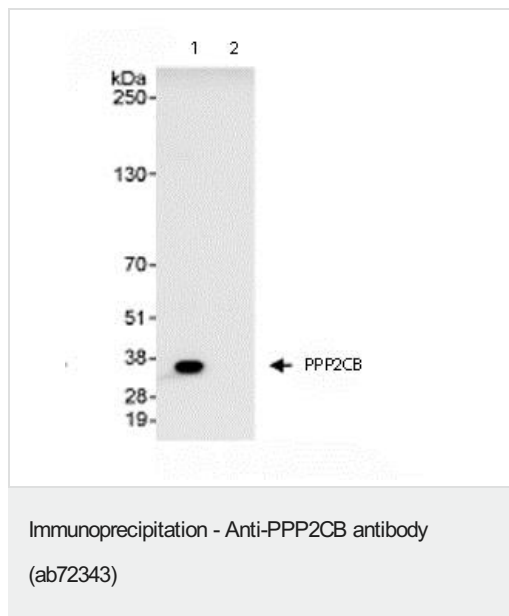
Developed using the ECL technique.

**Predicted band size:** 36 kDa

**Observed band size:** 36 kDa

**Additional bands at:** 190 kDa, 28 kDa. We are unsure as to the identity of these extra bands.

**Exposure time:** 3 minutes



Immunoprecipitation/ Western Blot of PPP2CB.

Lane 1: ab72343 at 3µg/mg whole cell lysate.

Lane 2: Control IgG.

ab72343 at 1µg/ml for WB.

Whole cell lysate from Hela cells at 1mg for IP, 20% of IP loaded.

Chemiluminescence with an exposure time of 30 seconds.

**Please note:** All products are "FOR RESEARCH USE ONLY. NOT FOR USE IN DIAGNOSTIC PROCEDURES"

#### Our Abpromise to you: Quality guaranteed and expert technical support

- Replacement or refund for products not performing as stated on the datasheet
- Valid for 12 months from date of delivery
- Response to your inquiry within 24 hours
- We provide support in Chinese, English, French, German, Japanese and Spanish
- Extensive multi-media technical resources to help you
- We investigate all quality concerns to ensure our products perform to the highest standards

If the product does not perform as described on this datasheet, we will offer a refund or replacement. For full details of the Abpromise, please visit <https://www.abcam.co.jp/abpromise> or contact our technical team.

#### Terms and conditions

- Guarantee only valid for products bought direct from Abcam or one of our authorized distributors