


Anti-PPM1G antibody ab70794

3 References [画像数 3](#)

製品の概要

製品名	Anti-PPM1G antibody
製品の詳細	Rabbit polyclonal to PPM1G
由来種	Rabbit
アプリケーション	適用あり: IHC-P, WB, IP
種交差性	交差種: Mouse, Human 交差が予測される動物種: Rabbit, Horse, Chicken, Guinea pig, Cow, Dog, Turkey, Pig, Xenopus laevis, Chimpanzee, Rhesus monkey, Gorilla, Orangutan, Xenopus tropicalis, Platypus 
免疫原	Synthetic peptide corresponding to a region between residue 400 and 450 of human PPM1G. (NP_817092.1)
ポジティブ・コントロール	HeLa and 293T whole cell lysates.
特記事項	<p>The Life Science industry has been in the grips of a reproducibility crisis for a number of years. Abcam is leading the way in addressing this with our range of recombinant monoclonal antibodies and knockout edited cell lines for gold-standard validation. Please check that this product meets your needs before purchasing.</p> <p>If you have any questions, special requirements or concerns, please send us an inquiry and/or contact our Support team ahead of purchase. Recommended alternatives for this product can be found below, along with publications, customer reviews and Q&As</p>

製品の特性

製品の状態	Liquid
保存方法	Shipped at 4°C. Upon delivery aliquot and store at -20°C. Avoid freeze / thaw cycles.
バッファー	pH: 6.8 Preservative: 0.09% Sodium azide Constituents: 0.1% BSA, Tris buffered saline
精製度	Immunogen affinity purified
ポリ/モノ	ポリクローナル
アイソタイプ	IgG

アプリケーション

The Abpromise guarantee

Abpromise保証は、次のテスト済みアプリケーションにおけるab70794の使用に適用されます

アプリケーションノートには、推奨の開始希釈率がありますが、適切な希釈率につきましてはご検討ください。

アプリケーション	Abreviews	特記事項
IHC-P		1/200 - 1/1000. Perform heat mediated antigen retrieval with citrate buffer pH 6 before commencing with IHC staining protocol.
WB		1/2000 - 1/10000. Detects a band of approximately 70 kDa (predicted molecular weight: 61 kDa).
IP		Use at 2-5 µg/mg of lysate.

ターゲット情報

組織特異性

Widely expressed. Most abundant in testis, skeletal muscle, and heart.

配列類似性

Belongs to the PP2C family.

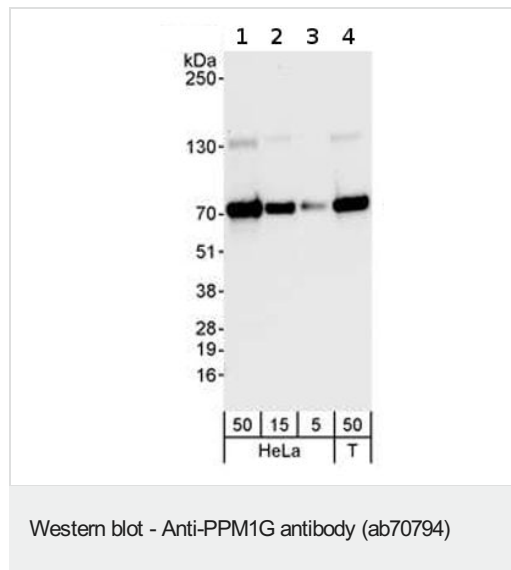
翻訳後修飾

Phosphorylated upon DNA damage, probably by ATM or ATR.

細胞内局在

Cytoplasm.

画像



All lanes : Anti-PPM1G antibody (ab70794) at 0.04 µg/ml

Lane 1 : HeLa whole cell lysate at 50 µg

Lane 2 : HeLa whole cell lysate at 15 µg

Lane 3 : HeLa whole cell lysate at 5 µg

Lane 4 : 293T whole cell lysate at 50 µg

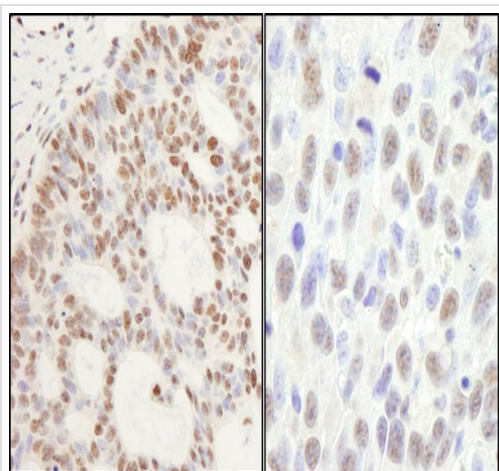
Developed using the ECL technique.

Predicted band size: 61 kDa

Observed band size: 70 kDa

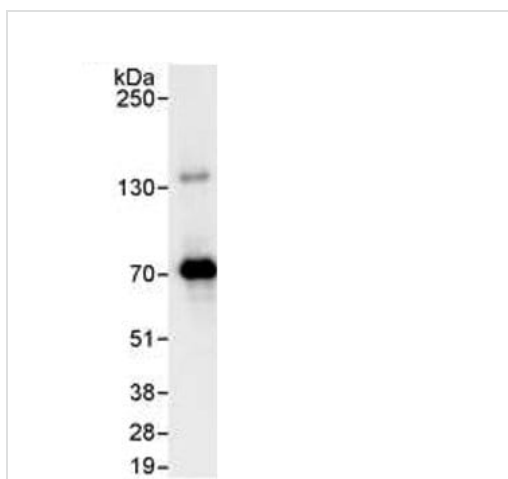
Additional bands at: 130 kDa. We are unsure as to the identity of these extra bands.

Exposure time: 10 seconds



Immunohistochemistry (Formalin/PFA-fixed paraffin-embedded sections) - Anti-PPM1G antibody (ab70794)

Immunohistochemistry (Formalin/PFA-fixed paraffin-embedded sections) analysis of human skin basal cell carcinoma (left) and mouse squamous cell carcinoma (right) tissues labelling PPM1G with ab70794 at 1/1000 (0.2µg/ml) and 1/200 (1µg/ml). Detection: DAB.



Immunoprecipitation - Anti-PPM1G antibody (ab70794)

HeLa whole cell lysate (1 mg for IP, 20% of IP loaded) with ab70794 at 1 µg/ml for WB, subsequent to being used for IP at 3 µg/mg lysate. Detection: Chemiluminescence with an exposure time of 1 second.

Please note: All products are "FOR RESEARCH USE ONLY. NOT FOR USE IN DIAGNOSTIC PROCEDURES"

Our Abpromise to you: Quality guaranteed and expert technical support

- Replacement or refund for products not performing as stated on the datasheet
- Valid for 12 months from date of delivery
- Response to your inquiry within 24 hours
- We provide support in Chinese, English, French, German, Japanese and Spanish

- Extensive multi-media technical resources to help you
- We investigate all quality concerns to ensure our products perform to the highest standards

If the product does not perform as described on this datasheet, we will offer a refund or replacement. For full details of the Abpromise, please visit <https://www.abcam.co.jp/abpromise> or contact our technical team.

Terms and conditions

- Guarantee only valid for products bought direct from Abcam or one of our authorized distributors