

Anti-PP2A-alpha antibody ab106262

★★★★★ 3 Abreviews 10 References 画像数 2

医薬用外劇物

製品の概要

製品名	Anti-PP2A-alpha antibody
製品の詳細	Rabbit polyclonal to PP2A-alpha
由来種	Rabbit
アプリケーション	適用あり: WB, IHC-P
種交差性	交差種: Mouse, Rat, Human
免疫原	Synthetic peptide aa 6-20 (N terminal). Sequence: FTKELDQWIEQLNEC

Database link: [P67775](#)

 [Run BLAST with](#)

 [Run BLAST with](#)

特記事項

The Life Science industry has been in the grips of a reproducibility crisis for a number of years. Abcam is leading the way in addressing this with our range of recombinant monoclonal antibodies and knockout edited cell lines for gold-standard validation. Please check that this product meets your needs before purchasing.

If you have any questions, special requirements or concerns, please send us an inquiry and/or contact our Support team ahead of purchase. Recommended alternatives for this product can be found below, along with publications, customer reviews and Q&As

製品の特性

製品の状態	Liquid
保存方法	Shipped at 4°C. Upon delivery aliquot and store at -20°C. Avoid freeze / thaw cycles.
バッファー	Preservatives: 0.025% Thimerosal (merthiolate), 0.025% Sodium azide Constituents: 2.5% BSA, 0.45% Sodium chloride, 0.1% Dibasic monohydrogen sodium phosphate
精製度	Immunogen affinity purified
ポリ/モノ	ポリクローナル
アイソタイプ	IgG

アプリケーション

The Abpromise guarantee

Abpromise保証は、次のテスト済みアプリケーションにおけるab106262の使用に適用されます

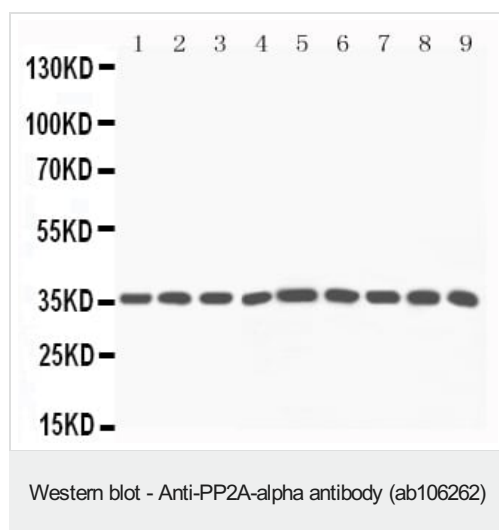
アプリケーションノートには、推奨の開始希釈率がありますが、適切な希釈率につきましてはご確認ください。

アプリケーション	Abreviews	特記事項
WB	★★★★★ (2)	Use a concentration of 1 - 2 µg/ml. Predicted molecular weight: 36 kDa.
IHC-P	★★★★★ (1)	Use a concentration of 1 - 2 µg/ml. Boiling the sections is required.

ターゲット情報

機能	PP2A can modulate the activity of phosphorylase B kinase casein kinase 2, mitogen-stimulated S6 kinase, and MAP-2 kinase. Cooperates with SGOL2 to protect centromeric cohesin from separase-mediated cleavage in oocytes specifically during meiosis I (By similarity). Can dephosphorylate SV40 large T antigen and p53/TP53. Dephosphorylates SV40 large T antigen, preferentially on serine residues 120, 123, 677, and perhaps 679. The C subunit was most active, followed by the AC form, which was more active than the ABC form, and activity of all three forms was strongly stimulated by manganese, and to a lesser extent by magnesium. Dephosphorylation by the AC form, but not C or ABC form is inhibited by small T antigen.
配列類似性	Belongs to the PPP phosphatase family. PP-1 subfamily.
翻訳後修飾	Reversibly methyl esterified on Leu-309. Carboxyl methylation may play a role in holoenzyme assembly. It varies during the cell cycle. Phosphorylation of either threonine (by autophosphorylation-activated protein kinase) or tyrosine results in inactivation of the phosphatase. Auto-dephosphorylation has been suggested as a mechanism for reactivation.
細胞内局在	Cytoplasm. Nucleus. Chromosome > centromere. Cytoplasm > cytoskeleton > spindle pole. In prometaphase cells, but not in anaphase cells, localizes at centromeres. During mitosis, also found at spindle poles. Centromeric localization requires the presence of SGOL2.

画像



All lanes : Anti-PP2A-alpha antibody (ab106262) at 0.5 µg/ml

Lane 1 : Rat kidney tissue Lysate

Lane 2 : Rat Liver tissue Lysate

Lane 3 : Human Placenta tissue Lysate

Lane 4 : Mouse Kidney tissue Lysate

Lane 5 : A431 Whole Cell Lysate

Lane 6 : HeLa Whole Cell Lysate

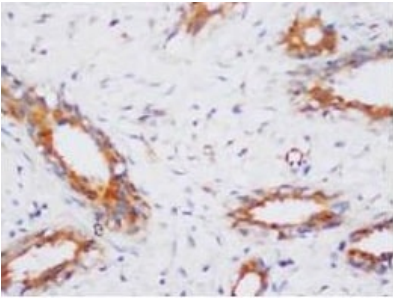
Lane 7 : 293T Whole Cell Lysate

Lane 8 : NIH Whole Cell Lysate

Lane 9 : PC12 Whole Cell Lysate

Lysates/proteins at 40 µg per lane.

Predicted band size: 36 kDa



Cytoplasmic staining of PP2A in a formalin fixed, paraffin embedded section of human mammary cancer, using ab106262 at a concentration of 2µg/ml.

Immunohistochemistry (Formalin/PFA-fixed paraffin-embedded sections) - Anti-PP2A-alpha antibody (ab106262)

Please note: All products are "FOR RESEARCH USE ONLY. NOT FOR USE IN DIAGNOSTIC PROCEDURES"

Our Abpromise to you: Quality guaranteed and expert technical support

- Replacement or refund for products not performing as stated on the datasheet
- Valid for 12 months from date of delivery
- Response to your inquiry within 24 hours
- We provide support in Chinese, English, French, German, Japanese and Spanish
- Extensive multi-media technical resources to help you
- We investigate all quality concerns to ensure our products perform to the highest standards

If the product does not perform as described on this datasheet, we will offer a refund or replacement. For full details of the Abpromise, please visit <https://www.abcam.co.jp/abpromise> or contact our technical team.

Terms and conditions

- Guarantee only valid for products bought direct from Abcam or one of our authorized distributors