

### Anti-PON1 antibody [EPR2892] ab92466

リコンビナント **RabMAb**

**4 References**   [画像数 10](#)

#### 製品の概要

製品名	Anti-PON1 antibody [EPR2892]
製品の詳細	Rabbit monoclonal [EPR2892] to PON1
由来種	Rabbit
特異性	Mouse species is recommended based on IHC results, we do not guarantee WB for mouse.
アプリケーション	<b>適用あり:</b> WB, IHC-P <b>適用なし:</b> ICC/IF
種交差性	<b>交差種:</b> Mouse, Human
免疫原	Synthetic peptide within Human PON1 aa 50-150 (N terminal). The exact sequence is proprietary.
ポジティブ・コントロール	WB: Human plasma cell lysate and ovary carcinoma tissue lysate; IHC-P: Human liver tissue. Mouse liver, kidney, and colon tissues.
特記事項	<p>This product is a recombinant monoclonal antibody, which offers several advantages including:</p> <ul style="list-style-type: none"> <li>- High batch-to-batch consistency and reproducibility</li> <li>- Improved sensitivity and specificity</li> <li>- Long-term security of supply</li> <li>- Animal-free production</li> </ul> <p>For more information <a href="#">see here</a>.</p> <p>Our RabMAb<sup>®</sup> technology is a patented hybridoma-based technology for making rabbit monoclonal antibodies. For details on our patents, please refer to <a href="#">RabMAb<sup>®</sup> patents</a>.</p> <p>Mouse, Rat: We have preliminary internal testing data to indicate this antibody may not react with these species. Please contact us for more information.</p>

#### 製品の特性

製品の状態	Liquid
保存方法	Shipped at 4°C. Store at -20°C. Stable for 12 months at -20°C.
バッファー	<p>pH: 7.20</p> <p>Preservative: 0.01% Sodium azide</p> <p>Constituents: 9% PBS, 40% Glycerol (glycerin, glycerine), 0.05% BSA, 50% Tissue culture supernatant</p>

精製度	Tissue culture supernatant
ポリ/モノ	モノクローナル
クローン名	EPR2892
アイソタイプ	IgG

## アプリケーション

**The Abpromise guarantee**      **Abpromise保証は、次のテスト済みアプリケーションにおけるab92466の使用に適用されます**  
 アプリケーションノートには、推奨の開始希釈率がありますが、適切な希釈率につきましてはご確認ください。

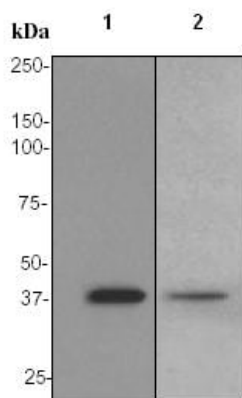
アプリケーション	Abreviews	特記事項
WB		1/1000 - 1/10000. Predicted molecular weight: 40 kDa.
IHC-P		1/100 - 1/250. Perform heat mediated antigen retrieval before commencing with IHC staining protocol.

**追加情報**      Is unsuitable for ICC/IF.

## ターゲット情報

機能	Hydrolyzes the toxic metabolites of a variety of organophosphorus insecticides. Capable of hydrolyzing a broad spectrum of organophosphate substrates and lactones, and a number of aromatic carboxylic acid esters. Mediates an enzymatic protection of low density lipoproteins against oxidative modification and the consequent series of events leading to atheroma formation.
組織特異性	Plasma, associated with HDL (at protein level). Expressed in liver, but not in heart, brain, placenta, lung, skeletal muscle, kidney or pancreas.
関連疾患	Genetic variation in PON1 is associated with susceptibility to microvascular complications of diabetes type 5 (MVCD5) [MIM:612633]. These are pathological conditions that develop in numerous tissues and organs as a consequence of diabetes mellitus. They include diabetic retinopathy, diabetic nephropathy leading to end-stage renal disease, and diabetic neuropathy. Diabetic retinopathy remains the major cause of new-onset blindness among diabetic adults. It is characterized by vascular permeability and increased tissue ischemia and angiogenesis. Note=Homozygosity for the Leu-54 allele is strongly associated with the development of retinal disease in diabetic patients.
配列類似性	Belongs to the paraoxonase family.
翻訳後修飾	Glycosylated. The signal sequence is not cleaved. Present in two forms, form B contains a disulfide bond, form A does not.
細胞内局在	Secreted > extracellular space.

## 画像



Western blot - Anti-PON1 antibody [EPR2892]  
(ab92466)

**All lanes :** Anti-PON1 antibody [EPR2892] (ab92466) at 1/1000 dilution

**Lane 1 :** Human plasma cell lysate

**Lane 2 :** ovarian cancer lysate

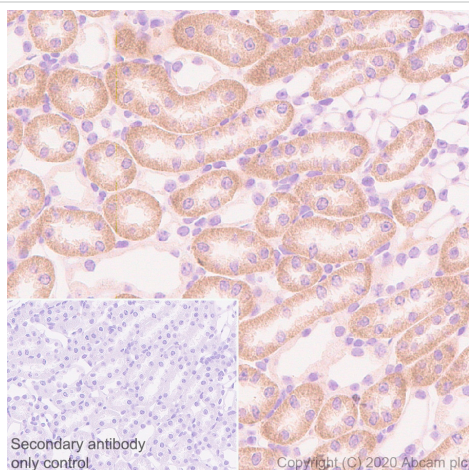
Lysates/proteins at 10 µg per lane.

#### Secondary

**Lane 1 :** HRP labelled Goat anti-Rabbit IgG at 1/2000 dilution

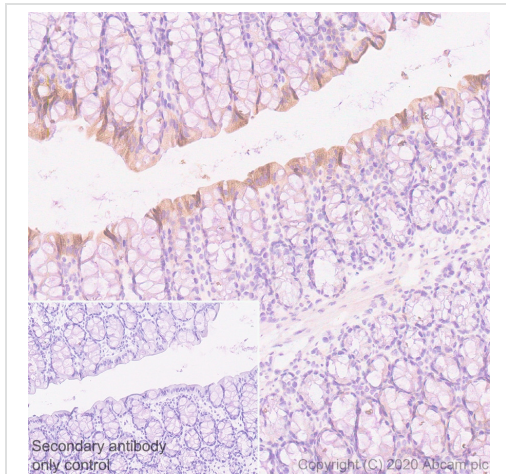
**Lane 2 :** HRP labelled goat anti-rabbit IgG at 1/2000 dilution

**Predicted band size:** 40 kDa



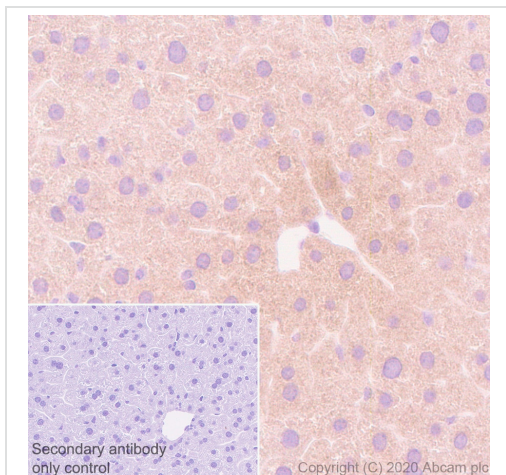
Immunohistochemistry (Formalin/PFA-fixed paraffin-embedded sections) - Anti-PON1 antibody [EPR2892] (ab92466)

Immunohistochemistry (Formalin/PFA-fixed paraffin-embedded sections) analysis of Mouse kidney tissue labelling PON1 with ab92466 at 1/100 dilution. Heat mediated antigen retrieval was performed using Tris/EDTA buffer pH 9 for 20 min. The section was incubated with ab92466 for 30 mins at room temperature. Cytoplasmic localization of PON1 visualized using Rabbit specific IHC polymer detection kit HRP/DAB (**ab209101**). Counterstained with hematoxylin. The immunostaining was performed on a Leica Biosystems BOND® RX instrument.



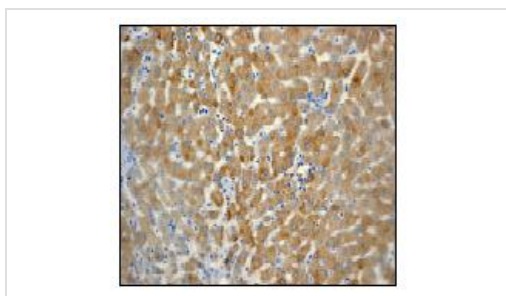
Immunohistochemistry (Formalin/PFA-fixed paraffin-embedded sections) - Anti-PON1 antibody  
[EPR2892] (ab92466)

Immunohistochemistry (Formalin/PFA-fixed paraffin-embedded sections) analysis of Mouse colon tissue labelling PON1 with ab92466 at 1/100 dilution. Heat mediated antigen retrieval was performed using Tris/EDTA buffer pH 9 for 20 min. The section was incubated with ab92466 for 30 mins at room temperature. Cytoplasmic localization of PON1 visualized using Rabbit specific IHC polymer detection kit HRP/DAB (**ab209101**). Counterstained with hematoxylin. The immunostaining was performed on a Leica Biosystems BOND® RX instrument.



Immunohistochemistry (Formalin/PFA-fixed paraffin-embedded sections) - Anti-PON1 antibody  
[EPR2892] (ab92466)

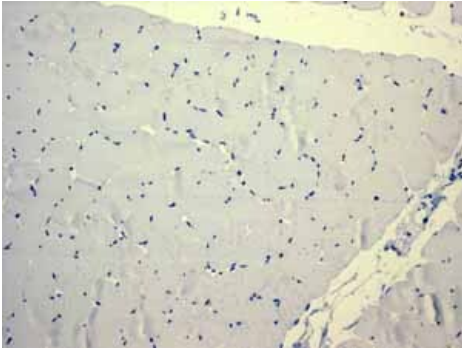
Immunohistochemistry (Formalin/PFA-fixed paraffin-embedded sections) analysis of Mouse liver tissue labelling PON1 with ab92466 at 1/100 dilution. Heat mediated antigen retrieval was performed using Tris/EDTA buffer pH 9 for 20 min. The section was incubated with ab92466 for 30 mins at room temperature. Cytoplasmic localization of PON1 visualized using Rabbit specific IHC polymer detection kit HRP/DAB (**ab209101**). Counterstained with hematoxylin. The immunostaining was performed on a Leica Biosystems BOND® RX instrument.



Immunohistochemistry (Formalin/PFA-fixed paraffin-embedded sections) - Anti-PON1 antibody  
[EPR2892] (ab92466)

ab92466, at 1/100 dilution, staining PON1 in formalin-fixed, paraffin-embedded Human liver tissue.

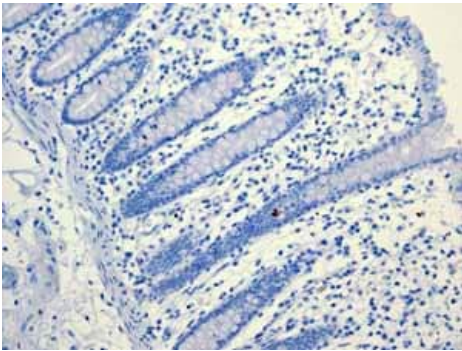
Heat mediated antigen retrieval was performed before commencing with IHC staining protocol.



Immunohistochemistry (Formalin/PFA-fixed paraffin-embedded sections) - Anti-PON1 antibody  
[EPR2892] (ab92466)

ab92466 showing negative staining in Skeletal muscle tissue.

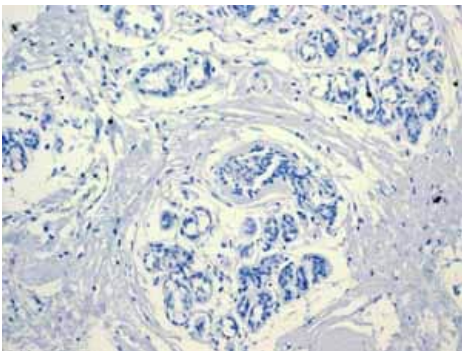
Heat mediated antigen retrieval was performed before commencing with IHC staining protocol.



Immunohistochemistry (Formalin/PFA-fixed paraffin-embedded sections) - Anti-PON1 antibody  
[EPR2892] (ab92466)

ab92466 showing negative staining in Normal colon tissue.

Heat mediated antigen retrieval was performed before commencing with IHC staining protocol.

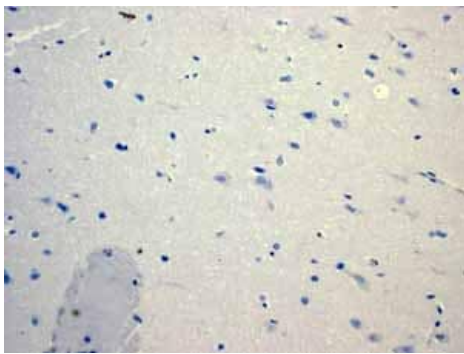


Immunohistochemistry (Formalin/PFA-fixed paraffin-embedded sections) - Anti-PON1 antibody  
[EPR2892] (ab92466)

ab92466 showing negative staining in Normal breast tissue.

Heat mediated antigen retrieval was performed before commencing with IHC staining protocol.





ab92466 showing negative staining in Normal brain tissue.

Heat mediated antigen retrieval was performed before commencing with IHC staining protocol.

Immunohistochemistry (Formalin/PFA-fixed paraffin-embedded sections) - Anti-PON1 antibody [EPR2892] (ab92466)

#### Why choose a recombinant antibody?



Anti-PON1 antibody [EPR2892] (ab92466)

**Please note:** All products are "FOR RESEARCH USE ONLY. NOT FOR USE IN DIAGNOSTIC PROCEDURES"

#### Our Abpromise to you: Quality guaranteed and expert technical support

- Replacement or refund for products not performing as stated on the datasheet
- Valid for 12 months from date of delivery
- Response to your inquiry within 24 hours
- We provide support in Chinese, English, French, German, Japanese and Spanish
- Extensive multi-media technical resources to help you
- We investigate all quality concerns to ensure our products perform to the highest standards

If the product does not perform as described on this datasheet, we will offer a refund or replacement. For full details of the Abpromise, please visit <https://www.abcam.co.jp/abpromise> or contact our technical team.

## Terms and conditions

---

- Guarantee only valid for products bought direct from Abcam or one of our authorized distributors