

Anti-POMC antibody ab32893

★★★★☆ **5 Abreviews** **26 References** 画像数 **2**

製品の概要

製品名	Anti-POMC antibody
製品の詳細	Goat polyclonal to POMC
由来種	Goat
アプリケーション	適用あり: WB, IHC-P, Flow Cyt (Intra), ELISA
種交差性	交差種: Human
免疫原	Synthetic peptide corresponding to Human POMC aa 256-267 (C terminal) (Cysteine residue). Sequence: C-NAIIKNAYKKGE Database link: <u>P01189</u> <div>  Run BLAST with  Run BLAST with </div>
ポジティブ・コントロール	IHC-P: Human pituitary gland; Flow Cyt (intra): A431 cells.
特記事項	<p>The Life Science industry has been in the grips of a reproducibility crisis for a number of years. Abcam is leading the way in addressing this with our range of recombinant monoclonal antibodies and knockout edited cell lines for gold-standard validation. Please check that this product meets your needs before purchasing.</p> <p>If you have any questions, special requirements or concerns, please send us an inquiry and/or contact our Support team ahead of purchase. Recommended alternatives for this product can be found below, along with publications, customer reviews and Q&As</p>

製品の特性

製品の状態	Liquid
保存方法	Shipped at 4°C. Upon delivery aliquot and store at -20°C. Avoid freeze / thaw cycles.
バッファー	pH: 7.30 Preservative: 0.02% Sodium azide Constituents: Tris buffered saline, 0.5% BSA
精製度	Immunogen affinity purified
特記事項 (精製)	This antibody was purified from goat serum by ammonium sulphate precipitation followed by antigen affinity chromatography using the immunizing peptide.
ポリ/モノ	ポリクローナル

アプリケーション

The Abpromise guarantee

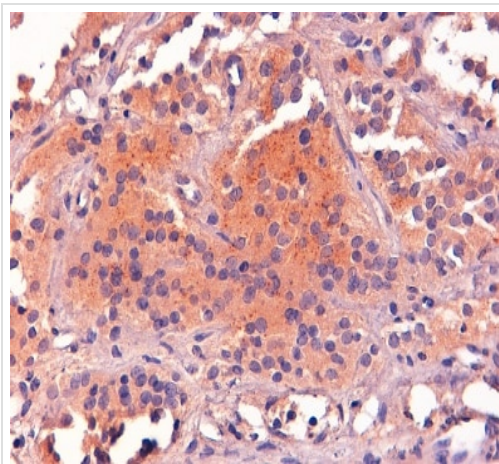
Abpromise保証は、次のテスト済みアプリケーションにおけるab32893の使用に適用されます

アプリケーションノートには、推奨の開始希釈率がありますが、適切な希釈率につきましてはご検討ください。

アプリケーション	Abreviews	特記事項
WB		Use a concentration of 0.3 - 2 µg/ml. Detects a band of approximately 26 kDa (predicted molecular weight: 29 kDa). A 1 hour primary incubation is recommended for this product. This product appears to react with the full length precursor protein only.
IHC-P	★★★★★ (2)	Use a concentration of 2 - 4 µg/ml. Perform heat mediated antigen retrieval with Tris/EDTA buffer pH 9.0 before commencing with IHC staining protocol.
Flow Cyt (Intra)		Use a concentration of 10 µg/ml.
ELISA		1/128000. Peptide ELISA

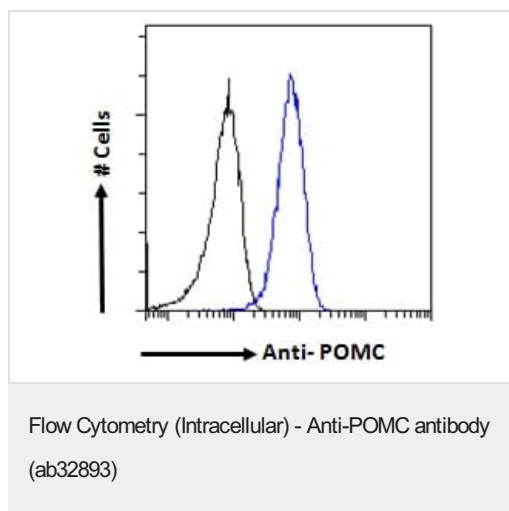
ターゲット情報

画像



Immunohistochemical analysis of Human pituitary gland labeling POMC with ab32893. Antigen retrieval by steaming with Tris/EDTA buffer pH 9. HRP-staining.

Immunohistochemistry (Formalin/PFA-fixed paraffin-embedded sections) - Anti-POMC antibody (ab32893)



Flow cytometry analysis of paraformaldehyde fixed A431 (human epidermoid carcinoma cell line) cells (blue line) labeling POMC with ab32893 at 10 µg/mL. Cells permeabilized with 0.5% Triton. Primary incubation for 1 hour followed by Alexa Fluor® 488 secondary antibody at 1 µg/mL.

IgG control: Unimmunized goat IgG (black line) followed by Alexa Fluor® 488 secondary antibody.

Please note: All products are "FOR RESEARCH USE ONLY. NOT FOR USE IN DIAGNOSTIC PROCEDURES"

Our Abpromise to you: Quality guaranteed and expert technical support

- Replacement or refund for products not performing as stated on the datasheet
- Valid for 12 months from date of delivery
- Response to your inquiry within 24 hours
- We provide support in Chinese, English, French, German, Japanese and Spanish
- Extensive multi-media technical resources to help you
- We investigate all quality concerns to ensure our products perform to the highest standards

If the product does not perform as described on this datasheet, we will offer a refund or replacement. For full details of the Abpromise, please visit <https://www.abcam.co.jp/abpromise> or contact our technical team.

Terms and conditions

- Guarantee only valid for products bought direct from Abcam or one of our authorized distributors