

Anti-Polyubiquitin-C antibody ab104455

画像数 3

製品の概要

| | |
|--------------|---|
| 製品名 | Anti-Polyubiquitin-C antibody |
| 製品の詳細 | Rabbit polyclonal to Polyubiquitin-C |
| 由来種 | Rabbit |
| 特異性 | This Ubiquitin antibody is generated from rabbits immunized with a KLH conjugated synthetic peptide between 36-66 amino acids of human Ubiquitin. |
| アプリケーション | 適用あり: WB, IHC-P |
| 種交差性 | 交差種: Human |
| 免疫原 | Synthetic peptide corresponding to Human Polyubiquitin-C aa 1-100 (C terminal). Database link: P0CG48 |
| ポジティブ・コントロール | Human Prostate and Testis tissue |
| 特記事項 | <p>The Life Science industry has been in the grips of a reproducibility crisis for a number of years. Abcam is leading the way in addressing this with our range of recombinant monoclonal antibodies and knockout edited cell lines for gold-standard validation. Please check that this product meets your needs before purchasing.</p> <p>If you have any questions, special requirements or concerns, please send us an inquiry and/or contact our Support team ahead of purchase. Recommended alternatives for this product can be found below, along with publications, customer reviews and Q&As</p> |

製品の特性

| | |
|--------|--|
| 製品の状態 | Liquid |
| 保存方法 | Shipped at 4°C. Store at 4°C (up to 6 months). Store at -20°C long term. |
| バッファー | pH: 7.4 Preservative: 0.09% Sodium azide Constituent: PBS |
| 精製度 | Ammonium Sulphate Precipitation |
| ポリ/モノ | ポリクローナル |
| アイソタイプ | IgG |

アプリケーション

The Abpromise guarantee Abpromise保証は、 次のテスト済みアプリケーションにおけるab104455の使用に適用されます
アプリケーションノートには、推奨の開始希釈率がありますが、適切な希釈率につきましてはご検討ください。

| アプリケーション | Abreviews | 特記事項 |
|----------|-----------|---|
| WB | | 1/100 - 1/500. Predicted molecular weight: 15 kDa. |
| IHC-P | | Use a concentration of 10 µg/ml. Perform heat mediated antigen retrieval with citrate buffer pH 6 before commencing with IHC staining protocol. |

ターゲット情報

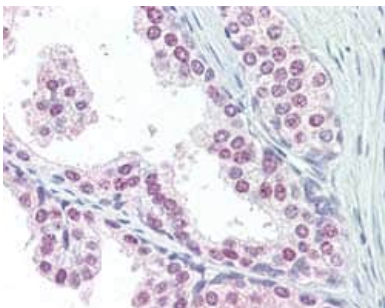
関連性

Ubiquitin exists either covalently attached to another protein, or free (unanchored). When covalently bound, it is conjugated to target proteins via an isopeptide bond either as a monomer (monoubiquitin), a polymer linked via different Lys residues of the ubiquitin (polyubiquitin chains) or a linear polymer linked via the initiator Met of the ubiquitin (linear polyubiquitin chains). Polyubiquitin chains, when attached to a target protein, have different functions depending on the Lys residue of the ubiquitin that is linked: Lys-6-linked may be involved in DNA repair; Lys-11-linked is involved in ERAD (endoplasmic reticulum-associated degradation) and in cell-cycle regulation; Lys-29-linked is involved in lysosomal degradation; Lys-33-linked is involved in kinase modification; Lys-48-linked is involved in protein degradation via the proteasome; Lys-63-linked is involved in endocytosis, DNA-damage responses as well as in signaling processes leading to activation of the transcription factor NF-kappa-B. Linear polymer chains formed via attachment by the initiator Met lead to cell signaling. Ubiquitin is usually conjugated to Lys residues of target proteins, however, in rare cases, conjugation to Cys or Ser residues has been observed. When polyubiquitin is free (unanchored-polyubiquitin), it also has distinct roles, such as in activation of protein kinases, and in signaling.

細胞内局在

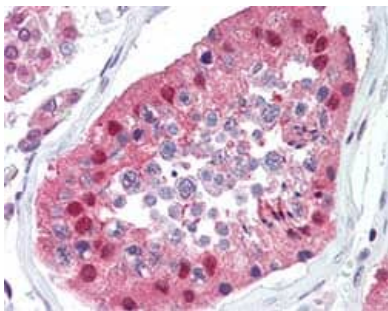
Cytoplasm. Nucleus

画像



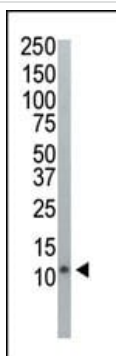
ab104455, at 10 µg/ml, staining Polyubiquitin-C in formalin-fixed, paraffin-embedded Human Prostate by Immunohistochemistry, followed by biotinylated goat anti-rabbit IgG secondary antibody, alkaline phosphatase-streptavidin and chromogen.

Immunohistochemistry (Formalin/PFA-fixed paraffin-embedded sections) - Anti-Polyubiquitin-C antibody (ab104455)



Immunohistochemistry (Formalin/PFA-fixed paraffin-embedded sections) - Anti-Polyubiquitin-C antibody (ab104455)

ab104455, at 10 µg/ml, staining Polyubiquitin-C in formalin-fixed, paraffin-embedded Human Testis by Immunohistochemistry, followed by biotinylated goat anti-rabbit IgG secondary antibody, alkaline phosphatase-streptavidin and chromogen.



Western blot - Anti-Polyubiquitin-C antibody (ab104455)

Western blot analysis of anti-Ubiquitin Pab (ab104455) in HeLa cell lysate. Ubiquitin (Arrow) was detected using purified Pab. Secondary HRP-anti-rabbit was used for signal visualization with chemiluminescence.

Please note: All products are "FOR RESEARCH USE ONLY. NOT FOR USE IN DIAGNOSTIC PROCEDURES"

Our Abpromise to you: Quality guaranteed and expert technical support

- Replacement or refund for products not performing as stated on the datasheet
- Valid for 12 months from date of delivery
- Response to your inquiry within 24 hours
- We provide support in Chinese, English, French, German, Japanese and Spanish
- Extensive multi-media technical resources to help you
- We investigate all quality concerns to ensure our products perform to the highest standards

If the product does not perform as described on this datasheet, we will offer a refund or replacement. For full details of the Abpromise, please visit <https://www.abcam.co.jp/abpromise> or contact our technical team.

Terms and conditions

- Guarantee only valid for products bought direct from Abcam or one of our authorized distributors