



# Anti-Podoplanin antibody ab10274

★★★★★ [1 Abreviews](#) [4 References](#) [画像数 1](#)

### 製品の概要

製品名	Anti-Podoplanin antibody
製品の詳細	Rabbit polyclonal to Podoplanin
由来種	Rabbit
アプリケーション	<b>適用あり:</b> WB
種交差性	<b>交差種:</b> Human
免疫原	Recombinant fragment (His-tag) corresponding to Human Podoplanin aa 1-150. Database link: <a href="#">Q86YL7</a>
	 <a href="#">Run BLAST with</a>  <a href="#">Run BLAST with</a>
ポジティブ・コントロール	WB: LEC whole cell lysate.
特記事項	<p>The Life Science industry has been in the grips of a reproducibility crisis for a number of years. Abcam is leading the way in addressing this with our range of recombinant monoclonal antibodies and knockout edited cell lines for gold-standard validation. Please check that this product meets your needs before purchasing.</p> <p>If you have any questions, special requirements or concerns, please send us an inquiry and/or contact our Support team ahead of purchase. Recommended alternatives for this product can be found below, along with publications, customer reviews and Q&amp;As</p>

### 製品の特性

製品の状態	Lyophilized: The lyophilized IgG is stable at 4°C for at least one month and for more than a year when kept at -20°C. When reconstituted in sterile water to a concentration of >0.5 mg/ml the antibody is stable for at least six months at 2-4°C in the presence of a preservative. Reconstituted antibody can also be aliquoted and stored at -20°C to -70°C for at least 1 year without detectable loss of activity. Avoid repeated freeze-thaw cycles.
保存方法	Shipped at 4°C. Upon delivery aliquot and store at -20°C or -80°C. Avoid repeated freeze / thaw cycles.
バッファー	Constituent: PBS
精製度	Protein A purified
ポリ/モノ	ポリクローナル
アイソタイプ	IgG

## アプリケーション

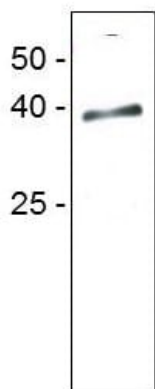
**The Abpromise guarantee**      **Abpromise保証は、次のテスト済みアプリケーションにおけるab10274の使用に適用されます**  
アプリケーションノートには、推奨の開始希釈率がありますが、適切な希釈率につきましてはご確認ください。

アプリケーション	Abreviews	特記事項
WB		Use at an assay dependent concentration. Predicted molecular weight: 16 kDa.

## ターゲット情報

機能	May be involved in cell migration and/or actin cytoskeleton organization. When expressed in keratinocytes, induces changes in cell morphology with transfected cells showing an elongated shape, numerous membrane protrusions, major reorganization of the actin cytoskeleton, increased motility and decreased cell adhesion. Required for normal lung cell proliferation and alveolus formation at birth. Induces platelet aggregation. Does not have any effect on folic acid or amino acid transport. Does not function as a water channel or as a regulator of aquaporin-type water channels.
組織特異性	Highly expressed in placenta, lung, skeletal muscle and brain. Weakly expressed in brain, kidney and liver. In placenta, expressed on the apical plasma membrane of endothelium. In lung, expressed in alveolar epithelium. Up-regulated in colorectal tumors and expressed in 25% of early oral squamous cell carcinomas.
配列類似性	Belongs to the podoplanin family.
翻訳後修飾	Extensively O-glycosylated. Contains sialic acid residues. O-glycosylation is necessary for platelet aggregation activity. The N-terminus is blocked.
細胞内局在	Membrane. Cell projection > filopodium membrane. Cell projection > lamellipodium membrane. Cell projection > microvillus membrane. Cell projection > ruffle membrane. Localized to actin-rich microvilli and plasma membrane projections such as filopodia, lamellipodia and ruffles.

## 画像



Western Blot analysis of Podoplanin expression in human lymphatic endothelial cells (LEC). The total lysate was subjected to SDS-PAGE and subsequent Western analysis with the polyclonal antibody ab10274.

Western blot - Rabbit polyclonal to Podoplanin (ab10274)

**Please note:** All products are "FOR RESEARCH USE ONLY. NOT FOR USE IN DIAGNOSTIC PROCEDURES"

#### Our Abpromise to you: Quality guaranteed and expert technical support

---

- Replacement or refund for products not performing as stated on the datasheet
- Valid for 12 months from date of delivery
- Response to your inquiry within 24 hours
- We provide support in Chinese, English, French, German, Japanese and Spanish
- Extensive multi-media technical resources to help you
- We investigate all quality concerns to ensure our products perform to the highest standards

If the product does not perform as described on this datasheet, we will offer a refund or replacement. For full details of the Abpromise, please visit <https://www.abcam.co.jp/abpromise> or contact our technical team.

#### Terms and conditions

---

- Guarantee only valid for products bought direct from Abcam or one of our authorized distributors