


Anti-PNR antibody ab16243

画像数 1

製品の概要

製品名	Anti-PNR antibody
製品の詳細	Rabbit polyclonal to PNR
由来種	Rabbit
アプリケーション	適用あり: WB
種交差性	交差種: Rat 交差が予測される動物種: Mouse, Chicken 
免疫原	Synthetic peptide corresponding to Human PNR aa 392-410. Sequence: RKTIGNTPMEKLLCDMFKN (Peptide available as ab39787) <div style="display: flex; justify-content: space-around; margin-top: 10px;">  Run BLAST with  Run BLAST with </div>
ポジティブ・コントロール	WB: Whole Rat eye extracts.
特記事項	<p>The Life Science industry has been in the grips of a reproducibility crisis for a number of years. Abcam is leading the way in addressing this with our range of recombinant monoclonal antibodies and knockout edited cell lines for gold-standard validation. Please check that this product meets your needs before purchasing.</p> <p>If you have any questions, special requirements or concerns, please send us an inquiry and/or contact our Support team ahead of purchase. Recommended alternatives for this product can be found below, along with publications, customer reviews and Q&As</p>

製品の特性

製品の状態	Liquid
保存方法	Shipped at 4°C. Store at +4°C short term (1-2 weeks). Upon delivery aliquot. Store at -20°C. Avoid freeze / thaw cycle.
バッファー	Preservative: 0.05% Sodium azide Constituents: PBS, 0.1% BSA
精製度	Immunogen affinity purified
ポリ/モノ	ポリクローナル
アイソタイプ	IgG

アプリケーション

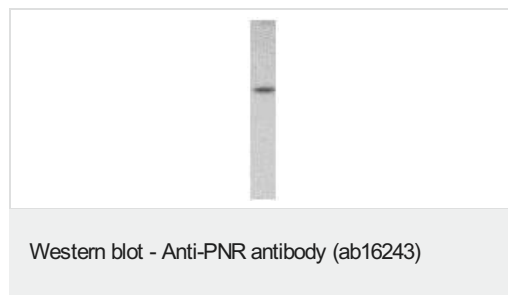
The Abpromise guarantee **Abpromise保証は、次のテスト済みアプリケーションにおけるab16243の使用に適用されます**
アプリケーションノートには、推奨の開始希釈率がありますが、適切な希釈率につきましてはご検討ください。

アプリケーション	Abreviews	特記事項
WB		Use a concentration of 2 µg/ml. Detects a band of approximately 42 kDa (predicted molecular weight: 38 kDa).

ターゲット情報

機能	Orphan receptor. Ligands are likely small molecules, either sharing some similarities with trace amine as, e.g. derivatives of indolamines (such as 5-methoxytryptamine) or of phenylethylamines (such as phenylethanolamine) or being any kind of metabolite of amino acids or biogenic amine neurotransmitters.
組織特異性	Expressed almost exclusively in skeletal muscle and selected areas of the brain, such amygdala, hippocampus, caudate nucleus, thalamus and hypothalamus. Weak expression is also find in substantia nigra.
配列類似性	Belongs to the G-protein coupled receptor 1 family.
細胞内局在	Cell membrane.

画像



ab16243 at 2ug/ml detecting PNR in rat eye extract by western blot

Please note: All products are "FOR RESEARCH USE ONLY. NOT FOR USE IN DIAGNOSTIC PROCEDURES"

Our Abpromise to you: Quality guaranteed and expert technical support

- Replacement or refund for products not performing as stated on the datasheet
- Valid for 12 months from date of delivery
- Response to your inquiry within 24 hours
- We provide support in Chinese, English, French, German, Japanese and Spanish
- Extensive multi-media technical resources to help you
- We investigate all quality concerns to ensure our products perform to the highest standards

If the product does not perform as described on this datasheet, we will offer a refund or replacement. For full details of the Abpromise, please visit <https://www.abcam.co.jp/abpromise> or contact our technical team.

Terms and conditions

- Guarantee only valid for products bought direct from Abcam or one of our authorized distributors