

Anti-Plxdc2 antibody ab67225

画像数 4

製品の概要

製品名	Anti-Plxdc2 antibody
製品の詳細	Rabbit polyclonal to Plxdc2
由来種	Rabbit
アプリケーション	適用あり: WB, ICC/IF, IHC-P
種交差性	交差種: Mouse, Human
免疫原	An 18 amino acid peptide from near the amino terminus of human Plxdc2.
ポジティブ・コントロール	WB: Human brain tissue lysate; Mouse cerebrum tissue lysate. IHC-P: Human brain tissue. ICC/IF: Human brain cells.
特記事項	<p>The Life Science industry has been in the grips of a reproducibility crisis for a number of years. Abcam is leading the way in addressing this with our range of recombinant monoclonal antibodies and knockout edited cell lines for gold-standard validation. Please check that this product meets your needs before purchasing.</p> <p>If you have any questions, special requirements or concerns, please send us an inquiry and/or contact our Support team ahead of purchase. Recommended alternatives for this product can be found below, along with publications, customer reviews and Q&As</p>

製品の特性

製品の状態	Liquid
保存方法	Shipped at 4°C. Store at +4°C.
バッファー	pH: 7.2 Preservative: 0.02% Sodium azide Constituent: PBS
精製度	Immunogen affinity purified
ポリ/モノ	ポリクローナル
アイソタイプ	IgG

アプリケーション

The Abpromise guarantee

Abpromise保証は、 次のテスト済みアプリケーションにおけるab67225の使用に適用されます

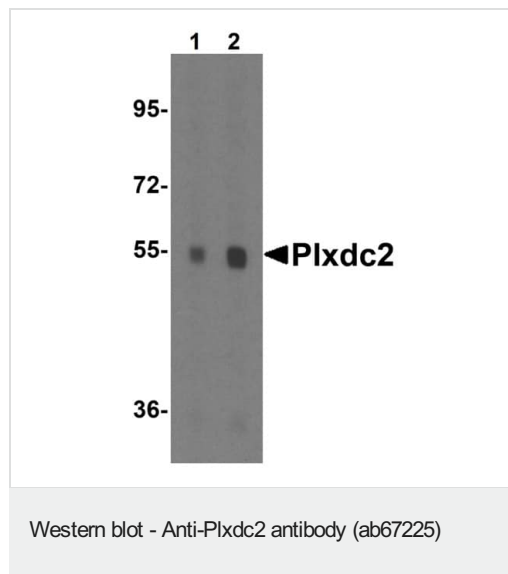
アプリケーションノートには、推奨の開始希釈率がありますが、適切な希釈率につきましてはご検討ください。

アプリケーション	Abreviews	特記事項
WB		Use a concentration of 0.5 - 1 µg/ml. Detects a band of approximately 60 kDa (predicted molecular weight: 60 kDa).
ICC/IF		Use a concentration of 20 µg/ml.
IHC-P		Use at an assay dependent concentration.

ターゲット情報

機能	May play a role in tumor angiogenesis.
組織特異性	Expressed in the endothelial cells of the stroma but not in the endothelial cells of normal colonic tissue.
配列類似性	Belongs to the plexin family. Contains 1 PSI domain.
細胞内局在	Membrane.

画像

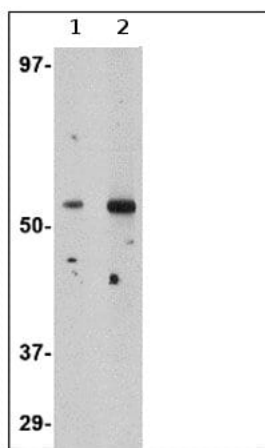


Lane 1 : Anti-Plxdc2 antibody (ab67225) at 1 µg/ml

Lane 2 : Anti-Plxdc2 antibody (ab67225) at 2 µg/ml

All lanes : Mouse cerebrum tissue lysate

Predicted band size: 60 kDa



Western blot - Anti-Plxdc2 antibody (ab67225)

Lane 1 : Anti-Plxdc2 antibody (ab67225) at 0.5 µg/ml

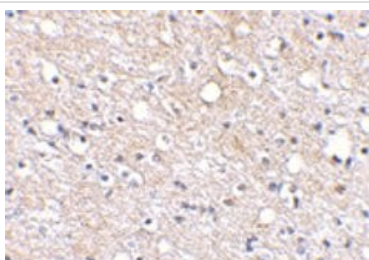
Lane 2 : Anti-Plxdc2 antibody (ab67225) at 1 µg/ml

All lanes : human brain tissue lysate

Lysates/proteins at 15 µg per lane.

Predicted band size: 60 kDa

Observed band size: 60 kDa



Immunohistochemistry (Formalin/PFA-fixed paraffin-embedded sections) - Anti-Plxdc2 antibody (ab67225)

ab67225 at 2.5µg/ml staining of Plxdc2 in human brain tissue using IHC-P.

Immunocytochemistry/ Immunofluorescence - Anti-Plxdc2 antibody (ab67225)

Immunofluorescence of Plxdc2 in Human Brain cells using ab67225 at 20 ug/ml.

Please note: All products are "FOR RESEARCH USE ONLY. NOT FOR USE IN DIAGNOSTIC PROCEDURES"

Our Abpromise to you: Quality guaranteed and expert technical support

- Replacement or refund for products not performing as stated on the datasheet

- Valid for 12 months from date of delivery
- Response to your inquiry within 24 hours
- We provide support in Chinese, English, French, German, Japanese and Spanish
- Extensive multi-media technical resources to help you
- We investigate all quality concerns to ensure our products perform to the highest standards

If the product does not perform as described on this datasheet, we will offer a refund or replacement. For full details of the Abpromise, please visit <https://www.abcam.co.jp/abpromise> or contact our technical team.

Terms and conditions

- Guarantee only valid for products bought direct from Abcam or one of our authorized distributors