


# Anti-Plexin D1 antibody ab96313

**3 References** [画像数 2](#)

### 製品の概要

製品名	Anti-Plexin D1 antibody
製品の詳細	Rabbit polyclonal to Plexin D1
由来種	Rabbit
アプリケーション	<b>適用あり:</b> WB
種交差性	交差種: Human 交差が予測される動物種: Mouse 
免疫原	Synthetic peptide corresponding to amino acids 1633-1694 (RKKLNTLAHY KIPEGASLAM SLIDKKDNTL GRVKDLDETEK YFHLVLPTDE LAEPKKSQRQ SH) of Human Plexin D1. <a href="#">Run BLAST with Expasy</a> <a href="#">Run BLAST with NCBI</a>
特記事項	<p>The Life Science industry has been in the grips of a reproducibility crisis for a number of years. Abcam is leading the way in addressing this with our range of recombinant monoclonal antibodies and knockout edited cell lines for gold-standard validation. Please check that this product meets your needs before purchasing.</p> <p>If you have any questions, special requirements or concerns, please send us an inquiry and/or contact our Support team ahead of purchase. Recommended alternatives for this product can be found below, along with publications, customer reviews and Q&amp;As</p>

### 製品の特性

製品の状態	Liquid
保存方法	Shipped at 4°C. Upon delivery aliquot and store at -20°C or -80°C. Avoid repeated freeze / thaw cycles.
バッファー	pH: 7.00 Preservative: 0.025% Proclin 300 Constituents: 79% PBS, 20% Glycerol (glycerin, glycerine)
精製度	Immunogen affinity purified
ポリモノ	ポリクローナル
アイソタイプ	IgG

### アプリケーション

## The Abpromise guarantee

**Abpromise保証は、次のテスト済みアプリケーションにおけるab96313の使用に適用されます**

アプリケーションノートには、推奨の開始希釈率がありますが、適切な希釈率につきましてはご検討ください。

アプリケーション	Abreviews	特記事項
WB		1/1000. Predicted molecular weight: 212 kDa.

## ターゲット情報

### 組織特異性

Detected at low levels in heart, placenta, lung, skeletal muscle, kidney, thymus and liver. Detected at very low levels in brain, colon, spleen, small intestine and peripheral blood leukocytes.

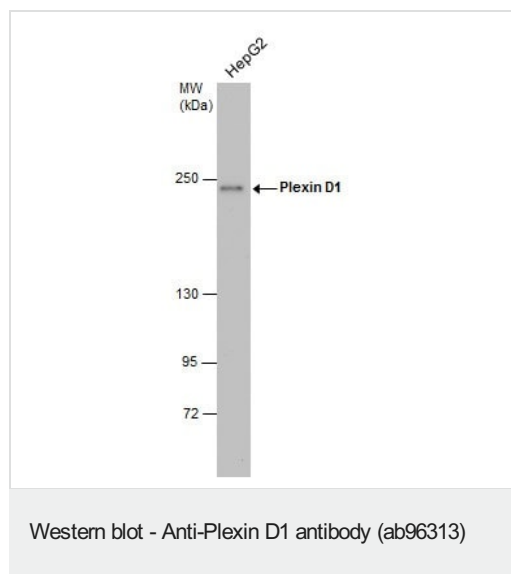
### 配列類似性

Belongs to the plexin family.  
Contains 3 IPT/TIG domains.  
Contains 1 Sema domain.

### 細胞内局在

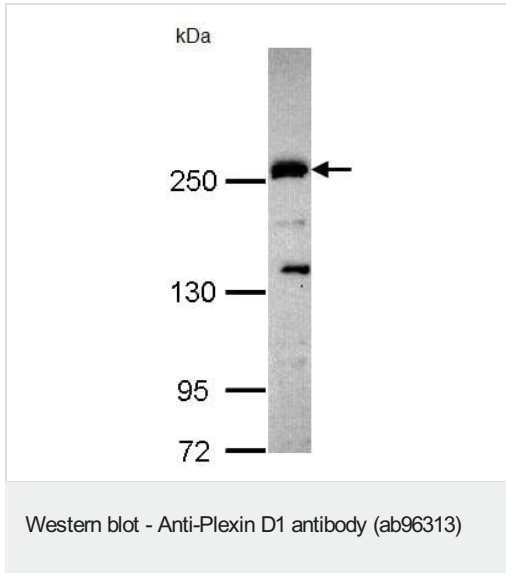
Cell membrane.

## 画像



Anti-Plexin D1 antibody (ab96313) at 1/1000 dilution + HepG2 whole cell lysates at 30 µg

**Predicted band size: 212 kDa**



Anti-Plexin D1 antibody (ab96313) at 1/1000 dilution + HepG2 whole cell lysate at 30  $\mu$ g

**Predicted band size:** 212 kDa

5% SDS PAGE

**Please note:** All products are "FOR RESEARCH USE ONLY. NOT FOR USE IN DIAGNOSTIC PROCEDURES"

### Our Abpromise to you: Quality guaranteed and expert technical support

---

- Replacement or refund for products not performing as stated on the datasheet
- Valid for 12 months from date of delivery
- Response to your inquiry within 24 hours
- We provide support in Chinese, English, French, German, Japanese and Spanish
- Extensive multi-media technical resources to help you
- We investigate all quality concerns to ensure our products perform to the highest standards

If the product does not perform as described on this datasheet, we will offer a refund or replacement. For full details of the Abpromise, please visit <https://www.abcam.co.jp/abpromise> or contact our technical team.

### Terms and conditions

---

- Guarantee only valid for products bought direct from Abcam or one of our authorized distributors