




Anti-Plexin D1 antibody ab28762

★★★★★ [2 Abreviews](#) [11 References](#) [画像数 3](#)

製品の概要

製品名	Anti-Plexin D1 antibody
製品の詳細	Goat polyclonal to Plexin D1
由来種	Goat
アプリケーション	適用あり: Flow Cyt (Intra), WB, IHC-P, ICC/IF, IP
種交差性	交差種: Mouse, Human 交差が予測される動物種: Cow, Dog, Pig 
免疫原	Synthetic peptide corresponding to Human Plexin D1 aa 1683-1694. Sequence: LAEPKKSHRQSH Database link: Q9Y4D7 <div>  Run BLAST with  Run BLAST with </div>
ポジティブ・コントロール	Flow Cyt (Intra): K562 cells. ICC/IF: HeLa and U251 cells
特記事項	<p>The Life Science industry has been in the grips of a reproducibility crisis for a number of years. Abcam is leading the way in addressing this with our range of recombinant monoclonal antibodies and knockout edited cell lines for gold-standard validation. Please check that this product meets your needs before purchasing.</p> <p>If you have any questions, special requirements or concerns, please send us an inquiry and/or contact our Support team ahead of purchase. Recommended alternatives for this product can be found below, along with publications, customer reviews and Q&As</p>

製品の特性

製品の状態	Liquid
保存方法	Shipped at 4°C. Upon delivery aliquot and store at -20°C or -80°C. Avoid repeated freeze / thaw cycles.
バッファー	pH: 7.30 Preservative: 0.02% Sodium azide Constituents: 0.5% Tris, 0.5% BSA
精製度	Immunogen affinity purified
特記事項 (精製)	This antibody was purified from goat serum by ammonium sulphate precipitation followed by

antigen affinity chromatography using the immunizing peptide.

ポリ/モノ

ポリクローナル

アイソタイプ

IgG

アプリケーション

The Abpromise guarantee **Abpromise保証は、** 次のテスト済みアプリケーションにおけるab28762の使用に適用されます
アプリケーションノートには、推奨の開始希釈率がありますが、適切な希釈率につきましてはご検討ください。

アプリケーション	Abreviews	特記事項
Flow Cyt (Intra)		Use a concentration of 10 µg/ml.
WB	★★★★★ (1)	Use at an assay dependent concentration. Predicted molecular weight: 212 kDa.
IHC-P	★★★★★ (1)	Use at an assay dependent concentration.
ICC/IF		Use a concentration of 10 µg/ml.
IP		Use at an assay dependent concentration. PubMed: 20385769

ターゲット情報

組織特異性

Detected at low levels in heart, placenta, lung, skeletal muscle, kidney, thymus and liver. Detected at very low levels in brain, colon, spleen, small intestine and peripheral blood leukocytes.

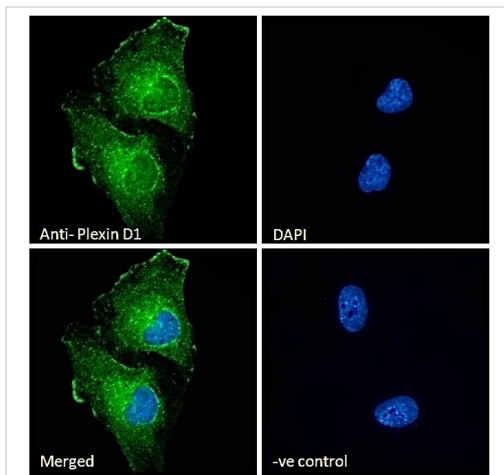
配列類似性

Belongs to the plexin family.
Contains 3 IPT/TIG domains.
Contains 1 Sema domain.

細胞内局在

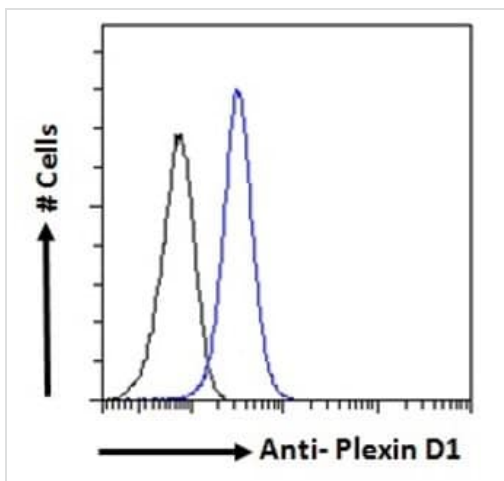
Cell membrane.

画像



Immunocytochemistry/ Immunofluorescence - Anti-Plexin D1 antibody (ab28762)

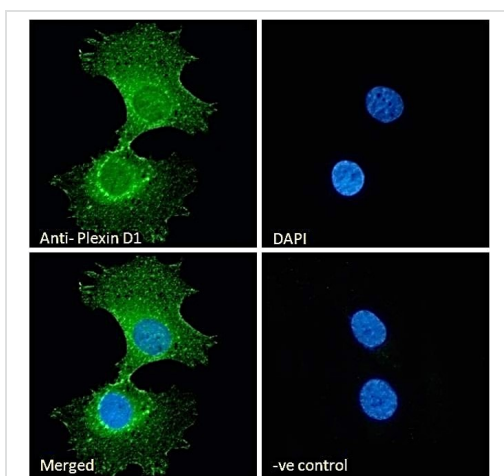
Immunocytochemistry/Immunofluorescence analysis of paraformaldehyde fixed U251 cells, permeabilized with 0.15% Triton. Primary incubation 1hr (10 μ g/mL) followed by Alexa Fluor 488 secondary antibody (2 μ g/mL), showing membrane and cytoplasmic staining. The nuclear stain is DAPI (blue). Negative control: Unimmunized goat IgG (10 μ g/mL) followed by Alexa Fluor 488 secondary antibody (2 μ g/mL).



Flow Cytometry (Intracellular) - Anti-Plexin D1 antibody (ab28762)

Flow cytometric analysis of paraformaldehyde fixed K562 cells (blue line), permeabilized with 0.5% Triton. Incubated with ab28762 for 1 hour (10 μ g/ml) followed by Alexa Fluor[®] 488 secondary antibody (2 μ g/ml).

IgG control: Unimmunized goat IgG (black line) followed by Alexa Fluor[®] 488 secondary antibody.



Immunocytochemistry/ Immunofluorescence - Anti-Plexin D1 antibody (ab28762)

Immunocytochemistry/Immunofluorescence analysis of paraformaldehyde fixed HeLa cells, permeabilized with 0.15% Triton. Primary incubation 1hr (10 μ g/mL) followed by Alexa Fluor 488 secondary antibody (2 μ g/mL), showing membrane and cytoplasmic staining. The nuclear stain is DAPI (blue). Negative control: Unimmunized goat IgG (10 μ g/mL) followed by Alexa Fluor 488 secondary antibody (2 μ g/mL).

Please note: All products are "FOR RESEARCH USE ONLY. NOT FOR USE IN DIAGNOSTIC PROCEDURES"

Our Abpromise to you: Quality guaranteed and expert technical support

- Replacement or refund for products not performing as stated on the datasheet
- Valid for 12 months from date of delivery
- Response to your inquiry within 24 hours

- We provide support in Chinese, English, French, German, Japanese and Spanish
- Extensive multi-media technical resources to help you
- We investigate all quality concerns to ensure our products perform to the highest standards

If the product does not perform as described on this datasheet, we will offer a refund or replacement. For full details of the Abpromise, please visit <https://www.abcam.co.jp/abpromise> or contact our technical team.

Terms and conditions

- Guarantee only valid for products bought direct from Abcam or one of our authorized distributors