

Anti-Plexin A4 antibody ab39350

★★★★☆ **4 Abreviews** **14 References** 画像数 3

製品の概要

製品名	Anti-Plexin A4 antibody
製品の詳細	Rabbit polyclonal to Plexin A4
由来種	Rabbit
アプリケーション	適用あり: WB, ICC/IF
種交差性	交差種: Mouse, Rat, Human
免疫原	Synthetic peptide corresponding to Mouse Plexin A4 aa 500-600 conjugated to keyhole limpet haemocyanin. (Peptide available as ab39349)
特記事項	<p>The Life Science industry has been in the grips of a reproducibility crisis for a number of years. Abcam is leading the way in addressing this with our range of recombinant monoclonal antibodies and knockout edited cell lines for gold-standard validation. Please check that this product meets your needs before purchasing.</p> <p>If you have any questions, special requirements or concerns, please send us an inquiry and/or contact our Support team ahead of purchase. Recommended alternatives for this product can be found below, along with publications, customer reviews and Q&As</p>

製品の特性

製品の状態	Liquid
保存方法	Shipped at 4°C. Store at +4°C short term (1-2 weeks). Upon delivery aliquot. Store at -20°C or -80°C. Avoid freeze / thaw cycle.
バッファー	<p>pH: 7.40</p> <p>Preservative: 0.02% Sodium azide</p> <p>Constituent: PBS</p> <p>Batches of this product that have a concentration < 1mg/ml may have BSA added as a stabilising agent. If you would like information about the formulation of a specific lot, please contact our scientific support team who will be happy to help.</p>
精製度	Immunogen affinity purified
ポリ/モノ	ポリクローナル
アイソタイプ	IgG

アプリケーション

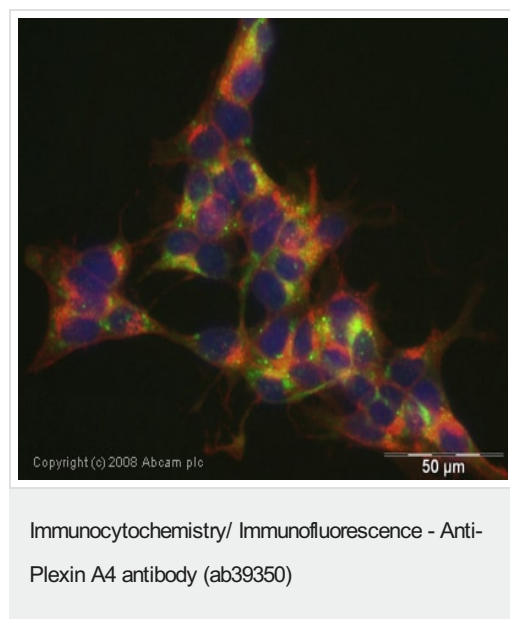
The Abpromise guarantee **Abpromise保証は、** 次のテスト済みアプリケーションにおけるab39350の使用に適用されます
アプリケーションノートには、推奨の開始希釈率がありますが、適切な希釈率につきましてはご検討ください。

アプリケーション	Abreviews	特記事項
WB		Use a concentration of 1 µg/ml. Detects a band of approximately 213 kDa (predicted molecular weight: 213 kDa).
ICC/IF	★★★★★ (1)	Use a concentration of 1 µg/ml.

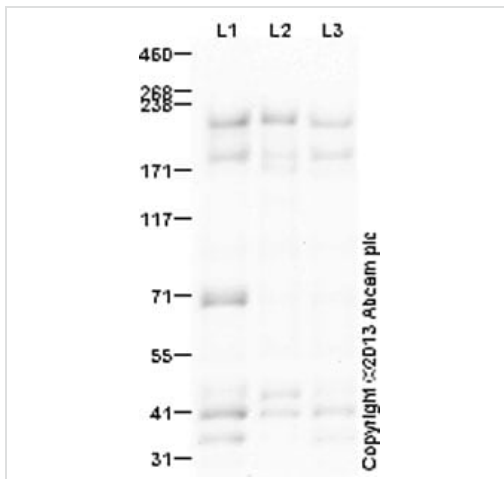
ターゲット情報

機能	Forms a receptor complex with neuropilin-1 and can propagate semaphorin-3A elicited inhibitory signals into cells and neurons.
配列類似性	Belongs to the plexin family. Contains 4 IPT/TIG domains. Contains 3 PSI domains. Contains 1 Sema domain.
翻訳後修飾	Phosphorylated upon DNA damage, probably by ATM or ATR.
細胞内局在	Membrane.

画像



ICC/IF image of ab39350 stained human SH-SY5Y cells. The cells were methanol fixed (5 min), permeabilised in TBS-T (20 min) and incubated with the antibody (ab39350, 1µg/ml) for 1h at room temperature. 1%BSA / 10% normal goat serum / 0.3M glycine was used to quench autofluorescence and block non-specific protein-protein interactions. The secondary antibody (green) was Alexa Fluor® 488 goat anti-rabbit IgG (H+L) used at a 1/1000 dilution for 1h. Alexa Fluor® 594 WGA was used to label plasma membranes (red). DAPI was used to stain the cell nuclei (blue).



Western blot - Anti-Plexin A4 antibody (ab39350)

All lanes : Anti-Plexin A4 antibody (ab39350) at 1 µg/ml

Lane 1 : Brain (Mouse) Tissue Lysate

Lane 2 : Mouse brain tissue lysate - total protein (0 days) ([ab7188](#))

Lane 3 : Brain (Rat) Tissue Lysate

Lysates/proteins at 20 µg per lane.

Secondary

All lanes : Goat Anti-Rabbit IgG H&L (HRP) ([ab97051](#)) at 1/35000 dilution

Developed using the ECL technique.

Performed under reducing conditions.

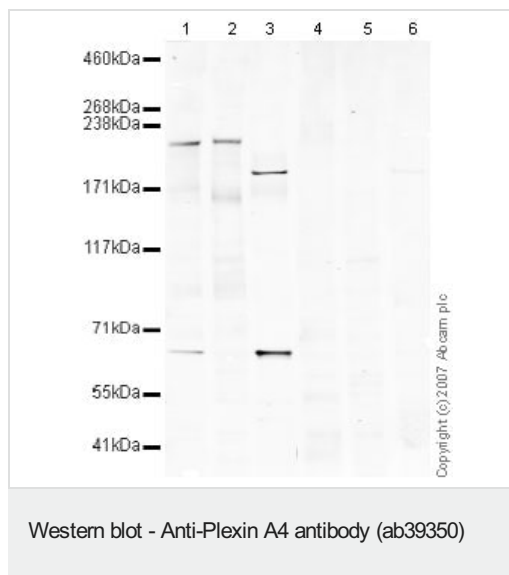
Predicted band size: 213 kDa

Observed band size: 213 kDa

Additional bands at: 190 kDa, 41 kDa, 70 kDa. We are unsure as to the identity of these extra bands.

Exposure time: 8 minutes

This blot was produced using a 3-8% Tris Acetate gel under the TA buffer system. The gel was run at 150V for 60 minutes before being transferred onto a Nitrocellulose membrane at 30V for 70 minutes. The membrane was then blocked for an hour using 3% Milk before being incubated with ab39350 overnight at 4°C. Antibody binding was detected using an anti-rabbit antibody conjugated to HRP, and visualised using ECL development solution [ab133406](#).



All lanes : Anti-Plexin A4 antibody (ab39350) at 1/250 dilution

Lane 1 : Brain (Mouse) Tissue Lysate

Lane 2 : Mouse brain tissue lysate - total protein (0 days) ([ab7188](#))

Lane 3 : Dorsal Root Ganglia (Mouse) Tissue Lysate

Lane 4 : Brain (Mouse) Tissue Lysate with Mouse Plexin A4 peptide ([ab39349](#)) at 1 µg/ml

Lane 5 : Mouse brain tissue lysate - total protein (0 days) ([ab7188](#)) with Mouse Plexin A4 peptide ([ab39349](#)) at 1 µg/ml

Lane 6 : Dorsal Root Ganglia (Mouse) Tissue Lysate with Mouse Plexin A4 peptide ([ab39349](#)) at 1 µg/ml

Lysates/proteins at 10 µg per lane.

Secondary

Lanes 1-2 : IRDye 680 Conjugated Goat Anti-Rabbit IgG (H+L) at 1/10000 dilution

Lanes 3-6 : IRDye 680 Conjugated Goat Anti-Rabbit IgG (H+L) at 1/10000 dilution

Performed under reducing conditions.

Predicted band size: 213 kDa

We are unsure as to the biological basis of the band at 190 kDa. However, it is successfully blocked by peptide ([ab39349](#)) suggesting this may be a possible isoform of Plexin A4.

Please note: All products are "FOR RESEARCH USE ONLY. NOT FOR USE IN DIAGNOSTIC PROCEDURES"

Our Abpromise to you: Quality guaranteed and expert technical support

- Replacement or refund for products not performing as stated on the datasheet
- Valid for 12 months from date of delivery

- Response to your inquiry within 24 hours
- We provide support in Chinese, English, French, German, Japanese and Spanish
- Extensive multi-media technical resources to help you
- We investigate all quality concerns to ensure our products perform to the highest standards

If the product does not perform as described on this datasheet, we will offer a refund or replacement. For full details of the Abpromise, please visit <https://www.abcam.co.jp/abpromise> or contact our technical team.

Terms and conditions

- Guarantee only valid for products bought direct from Abcam or one of our authorized distributors