


Anti-Plexin A1 antibody [EPR3449] ab92346

リコンビナント RabMAb

★★★★★ [2 Abreviews](#) [1 References](#) [画像数 3](#)

製品の概要

製品名	Anti-Plexin A1 antibody [EPR3449]
製品の詳細	Rabbit monoclonal [EPR3449] to Plexin A1
由来種	Rabbit
特異性	ab92346 is expected to cross react with Plexin A3 and A4 due to 100% immunogen homology with Plexin A3 and 87.5 % with Plexin A4, however not tested experimentally.
アプリケーション	適用あり: Flow Cyt (Intra), WB 適用なし: IHC-P or IP
種交差性	交差種: Human 交差が予測される動物種: Mouse, Rat 
免疫原	Synthetic peptide within Human Plexin A1 aa 100-200. The exact sequence is proprietary.
ポジティブ・コントロール	WB: KS62, HUVEC and HepG2 whole cell lysate (ab7900); fetal brain tissue lysate Flow Cyt (intra): K562 cells
特記事項	This product is a recombinant monoclonal antibody, which offers several advantages including: <ul style="list-style-type: none"> - High batch-to-batch consistency and reproducibility - Improved sensitivity and specificity - Long-term security of supply - Animal-free production For more information see here . Our RabMAb [®] technology is a patented hybridoma-based technology for making rabbit monoclonal antibodies. For details on our patents, please refer to RabMAb[®] patents .

製品の特性

製品の状態	Liquid
保存方法	Shipped at 4°C. Upon delivery aliquot and store at -20°C. Avoid repeated freeze / thaw cycles.
バッファー	pH: 7.20 Preservative: 0.05% Sodium azide Constituents: 0.1% BSA, 40% Glycerol (glycerin, glycerine), 9.85% Tris glycine, 50% Tissue culture supernatant
精製度	Protein A purified

特記事項(精製)	This antibody is not purified. It is provided in cell supernatant and storage buffer.
ポリ/モノ	モノクローナル
クローン名	EPR3449
アイソタイプ	IgG

アプリケーション

The Abpromise guarantee **Abpromise保証は、次のテスト済みアプリケーションにおけるab92346の使用に適用されます**
 アプリケーションノートには、推奨の開始希釈率がありますが、適切な希釈率につきましてはご検討ください。

アプリケーション	Abreviews	特記事項
Flow Cyt (Intra)		1/50. ab172730 - Rabbit monoclonal IgG, is suitable for use as an isotype control with this antibody.
WB	★★★★★ (2)	1/1000 - 1/2000. Predicted molecular weight: 211 kDa.

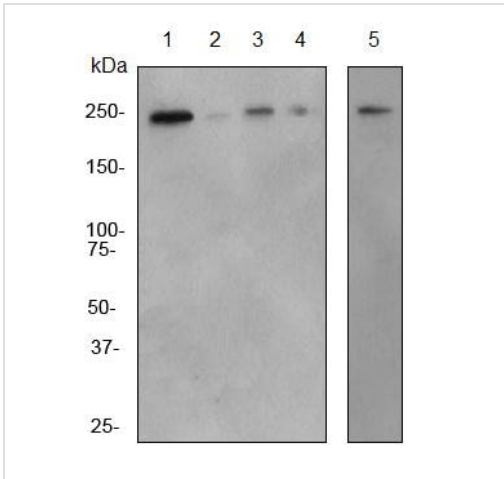
追加情報 Is unsuitable for IHC-P or IP.

ターゲット情報

関連性 Function: Coreceptor for SEMA3A, SEMA3C, SEMA3F and SEMA6D. Necessary for signaling by class 3 semaphorins and subsequent remodeling of the cytoskeleton. Plays a role in axon guidance, invasive growth and cell migration. Class 3 semaphorins bind to a complex composed of a neuropilin and a plexin. The plexin modulates the affinity of the complex for specific semaphorins, and its cytoplasmic domain is required for the activation of down-stream signaling events in the cytoplasm. Tissue specificity: Detected in fetal brain, lung, liver and kidney. Similarity: Belongs to the plexin family. Contains 4 IPT/TIG domains. Contains 1 Sema domain.

細胞内局在 Cell Membrane

画像



Western blot - Anti-Plexin A1 antibody [EPR3449] (ab92346)

All lanes : Anti-Plexin A1 antibody [EPR3449] (ab92346) at 1/1000 dilution

Lane 1 : K562 cell lysate

Lane 2 : 293T cell lysate

Lane 3 : HUVEC cell lysate

Lane 4 : HepG2 cell lysate

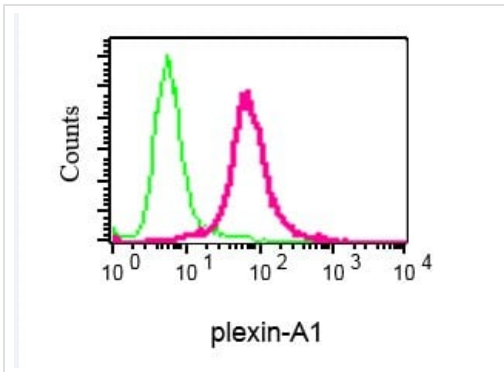
Lane 5 : Fetal brain tissue lysate

Lysates/proteins at 10 µg per lane.

Secondary

All lanes : HRP labelled goat anti-rabbit antibody at 1/2000 dilution





Predicted band size: 211 kDa



Flow Cytometry (Intracellular) - Anti-Plexin A1 antibody [EPR3449] (ab92346)

Intracellular Flow Cytometry analysis of permeabilized K562 cells labeling Plexin A1 with ab92346 at 1/50 (red) compared to a rabbit IgG (negative control) (green).

Why choose a recombinant antibody?

 Research with confidence Consistent and reproducible results	 Long-term and scalable supply Recombinant technology
 Success from the first experiment Confirmed specificity	 Ethical standards compliant Animal-free production

Anti-Plexin A1 antibody [EPR3449] (ab92346)

Our Abpromise to you: Quality guaranteed and expert technical support

- Replacement or refund for products not performing as stated on the datasheet
- Valid for 12 months from date of delivery
- Response to your inquiry within 24 hours

- We provide support in Chinese, English, French, German, Japanese and Spanish
- Extensive multi-media technical resources to help you
- We investigate all quality concerns to ensure our products perform to the highest standards

If the product does not perform as described on this datasheet, we will offer a refund or replacement. For full details of the Abpromise, please visit <https://www.abcam.co.jp/abpromise> or contact our technical team.

Terms and conditions

- Guarantee only valid for products bought direct from Abcam or one of our authorized distributors