




Anti-PLD2 (phospho Y169) antibody ab78907

1 References [画像数 2](#)

製品の概要

| | |
|--------------|-----------------------------------------------------------------------------------------------------------------------------------------------------------------------------------------------------------------------------------------------------------------------------------------------------------------------------------------------------------------------------------------------------------------------------------------------------------------------------------------------------------------------------------------------------------------------------------------------------------------|
| 製品名 | Anti-PLD2 (phospho Y169) antibody |
| 製品の詳細 | Rabbit polyclonal to PLD2 (phospho Y169) |
| 由来種 | Rabbit |
| アプリケーション | 適用あり: WB, IHC-P |
| 種交差性 | 交差種: Human 交差が予測される動物種: Mouse, Rat  |
| 免疫原 | Synthetic peptide corresponding to Human PLD2 (phospho Y169). Database link: NP_002654 <div>  Run BLAST with  Run BLAST with </div> |
| ポジティブ・コントロール | IHC-P: human brain tissue WB: extracts from Jurkat cells treated with TNF (20 ng/ml, 30 min) |
| 特記事項 | <p>The Life Science industry has been in the grips of a reproducibility crisis for a number of years. Abcam is leading the way in addressing this with our range of recombinant monoclonal antibodies and knockout edited cell lines for gold-standard validation. Please check that this product meets your needs before purchasing.</p> <p>If you have any questions, special requirements or concerns, please send us an inquiry and/or contact our Support team ahead of purchase. Recommended alternatives for this product can be found below, along with publications, customer reviews and Q&As</p> |

製品の特性

| | |
|-----------|-------------------------------------------------------------------------------------------------------------------------------------------------------|
| 製品の状態 | Liquid |
| 保存方法 | Shipped at 4°C. Upon delivery aliquot and store at -20°C. Avoid freeze / thaw cycles. |
| バッファー | pH: 7.40 Preservative: 0.02% Sodium azide Constituents: 50% Glycerol (glycerin, glycerine), 0.87% Sodium chloride, PBS Without Mg2+ and Ca2+ |
| 精製度 | Immunogen affinity purified |
| 特記事項 (精製) | ab78907 was purified by affinity chromatography using an epitope specific phosphopeptide. |
| ポリ/モノ | ポリクローナル |

アイソタイプ

IgG

アプリケーション

The Abpromise guarantee

Abpromise保証は、次のテスト済みアプリケーションにおけるab78907の使用に適用されます

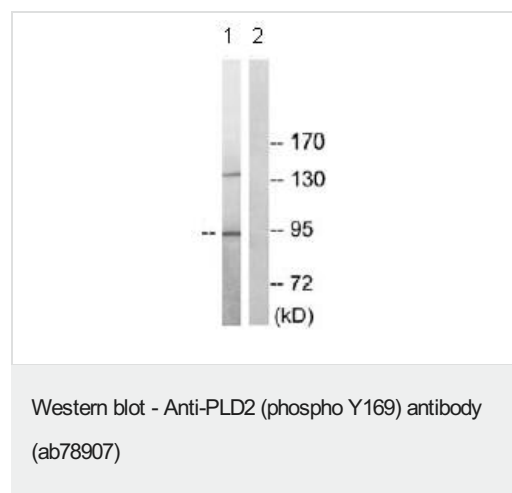
アプリケーションノートには、推奨の開始希釈率がありますが、適切な希釈率につきましてはご検討ください。

| アプリケーション | Abreviews | 特記事項 |
|----------|-----------|------------------------------------------------------|
| WB | | 1/500 - 1/1000. Predicted molecular weight: 106 kDa. |
| IHC-P | | 1/50 - 1/100. |

ターゲット情報

| | |
|-------|-------------------------------------------------------------------------------------------------------------------------------------------------------|
| 機能 | May have a role in signal-induced cytoskeletal regulation and/or endocytosis. |
| 組織特異性 | Ubiquitous. |
| 配列類似性 | Belongs to the phospholipase D family. Contains 1 PH domain. Contains 2 PLD phosphodiesterase domains. Contains 1 PX (phox homology) domain. |
| 細胞内局在 | Membrane. |

画像



All lanes : Anti-PLD2 (phospho Y169) antibody (ab78907) at 1/500 dilution

Lane 1 : extracts from Jurkat cells, treated with TNF (20 ng/ml, 30 min)

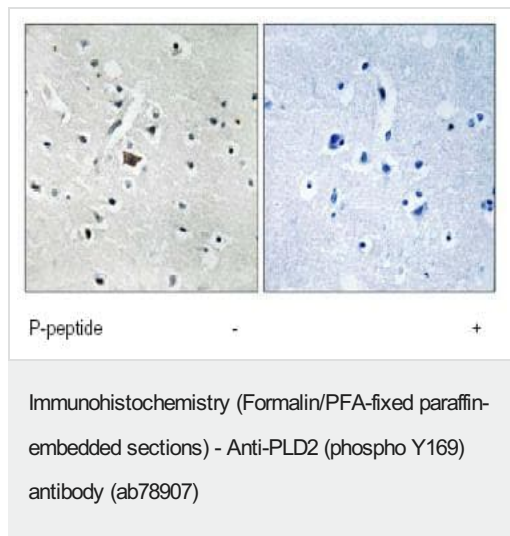
Lane 2 : extracts from Jurkat cells, treated with TNF (20 ng/ml, 30 min) with immunizing peptide at 5 µg

Lysates/proteins at 5 µg per lane.

Predicted band size: 106 kDa

Observed band size: 94 kDa

Additional bands at: 140 kDa. We are unsure as to the identity of these extra bands.



Immunohistochemical analysis of PLD2 in paraffin embedded human brain tissue using ab78907, at 1/50 dilution, in the presence (right image) and absence (left image) of the immunizing peptide.

Please note: All products are "FOR RESEARCH USE ONLY. NOT FOR USE IN DIAGNOSTIC PROCEDURES"

Our Abpromise to you: Quality guaranteed and expert technical support

- Replacement or refund for products not performing as stated on the datasheet
- Valid for 12 months from date of delivery
- Response to your inquiry within 24 hours
- We provide support in Chinese, English, French, German, Japanese and Spanish
- Extensive multi-media technical resources to help you
- We investigate all quality concerns to ensure our products perform to the highest standards

If the product does not perform as described on this datasheet, we will offer a refund or replacement. For full details of the Abpromise, please visit <https://www.abcam.co.jp/abpromise> or contact our technical team.

Terms and conditions

- Guarantee only valid for products bought direct from Abcam or one of our authorized distributors