

Anti-PLCG 2 (phospho Y759) antibody [EP1406Y] ab51020

リコンビナント **RabMAb**

★★★★★ [1 Abreviews](#) [1 References](#) [画像数 2](#)

製品の概要

製品名	Anti-PLCG 2 (phospho Y759) antibody [EP1406Y]
製品の詳細	Rabbit monoclonal [EP1406Y] to PLCG 2 (phospho Y759)
由来種	Rabbit
アプリケーション	適用あり: ICC/IF, WB 適用なし: Flow Cyt
種交差性	交差種: Human
免疫原	Synthetic peptide. This information is proprietary to Abcam and/or its suppliers.
ポジティブ・コントロール	Raji cell lysate.
特記事項	<p>Our RabMAb[®] technology is a patented hybridoma-based technology for making rabbit monoclonal antibodies. For details on our patents, please refer to RabMAb[®] patents.</p> <p>The Life Science industry has been in the grips of a reproducibility crisis for a number of years. Abcam is leading the way in addressing this with our range of recombinant monoclonal antibodies and knockout edited cell lines for gold-standard validation. Please check that this product meets your needs before purchasing.</p> <p>If you have any questions, special requirements or concerns, please send us an inquiry and/or contact our Support team ahead of purchase. Recommended alternatives for this product can be found below, along with publications, customer reviews and Q&As</p> <p>Mouse, Rat: We have preliminary internal testing data to indicate this antibody may not react with these species. Please contact us for more information.</p>

製品の特性

製品の状態	Liquid
保存方法	Shipped at 4°C. Store at -20°C. Stable for 12 months at -20°C.
バッファー	pH: 7.20 Preservative: 0.05% Sodium azide Constituents: 0.1% BSA, 40% Glycerol (glycerin, glycerine), 9.85% Tris glycine, 50% Tissue culture supernatant
精製度	Protein A purified

ポリ/モノ	モノクローナル
クローン名	EP1406Y
アイソタイプ	IgG

アプリケーション

The Abpromise guarantee Abpromise保証は、 次のテスト済みアプリケーションにおけるab51020の使用に適用されます
アプリケーションノートには、推奨の開始希釈率がありますが、適切な希釈率につきましてはご検討ください。

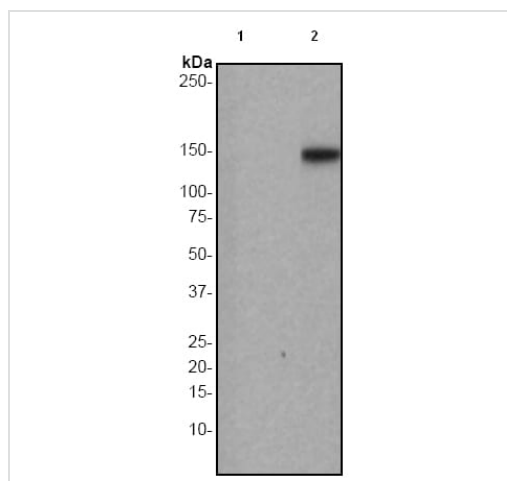
アプリケーション	Abreviews	特記事項
ICC/IF		1/50 - 1/100.
WB	★★★★★ (1)	1/50000 - 1/100000. Detects a band of approximately 150 kDa (predicted molecular weight: 148 kDa).

追加情報 Is unsuitable for Flow Cyt.

ターゲット情報

機能	The production of the second messenger molecules diacylglycerol (DAG) and inositol 1,4,5-trisphosphate (IP3) is mediated by activated phosphatidylinositol-specific phospholipase C enzymes. It is a crucial enzyme in transmembrane signaling.
配列類似性	Contains 1 C2 domain. Contains 1 PH domain. Contains 1 PI-PLC X-box domain. Contains 1 PI-PLC Y-box domain. Contains 2 SH2 domains. Contains 1 SH3 domain.
翻訳後修飾	Phosphorylated on tyrosine residues; upon ligand-induced activation of a variety of growth factor receptors and immune system receptors. Increases phospholipase activity.

画像



Western blot - Anti-PLCG 2 (phospho Y759) antibody [EP1406Y] (ab51020)

All lanes : Anti-PLCG 2 (phospho Y759) antibody [EP1406Y] (ab51020) at 1/100000 dilution

Lane 1 : Raji cell lysate, untreated

Lane 2 : Raji cell lysate, treated with pervanadate

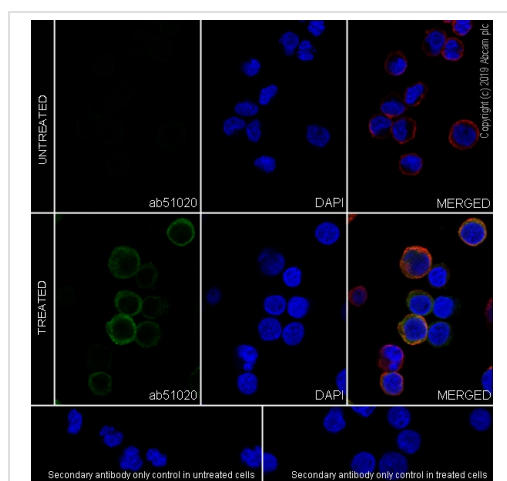
Lysates/proteins at 10 µg per lane.

Secondary

All lanes : Goat anti-rabbit HRP labeled at 1/2000 dilution

Predicted band size: 148 kDa

Observed band size: 150 kDa



Immunocytochemistry/ Immunofluorescence - Anti-PLCG 2 (phospho Y759) antibody [EP1406Y] (ab51020)

Immunocytochemistry analysis of Raji (human Burkitt's lymphoma B lymphocyte) labeling PLCG 2 with purified ab51020 at 1/50 dilution (4 µg/ml). Cells were fixed with 4% Paraformaldehyde and permeabilised with 0.1% tritonX-100. Goat anti rabbit IgG (Alexa Fluor® 488, **ab150077**) at 1/1000 (2 µg/ml) was used as the secondary antibody. **ab195889** Anti-alpha Tubulin antibody [DM1A] - Microtubule Marker (Alexa Fluor® 594) 1/200 (2.12 µg/ml) was used as counterstain. Nuclei were stained blue with DAPI. Negative control: PBS instead of the primary antibody.

Please note: All products are "FOR RESEARCH USE ONLY. NOT FOR USE IN DIAGNOSTIC PROCEDURES"

Our Abpromise to you: Quality guaranteed and expert technical support

- Replacement or refund for products not performing as stated on the datasheet
- Valid for 12 months from date of delivery
- Response to your inquiry within 24 hours
- We provide support in Chinese, English, French, German, Japanese and Spanish
- Extensive multi-media technical resources to help you
- We investigate all quality concerns to ensure our products perform to the highest standards

If the product does not perform as described on this datasheet, we will offer a refund or replacement. For full details of the Abpromise, please visit <https://www.abcam.co.jp/abpromise> or contact our technical team.

Terms and conditions

- Guarantee only valid for products bought direct from Abcam or one of our authorized distributors