

Anti-PLCG 2 (phospho Y1217) antibody [EP1404Y] ab52610

RabMAb

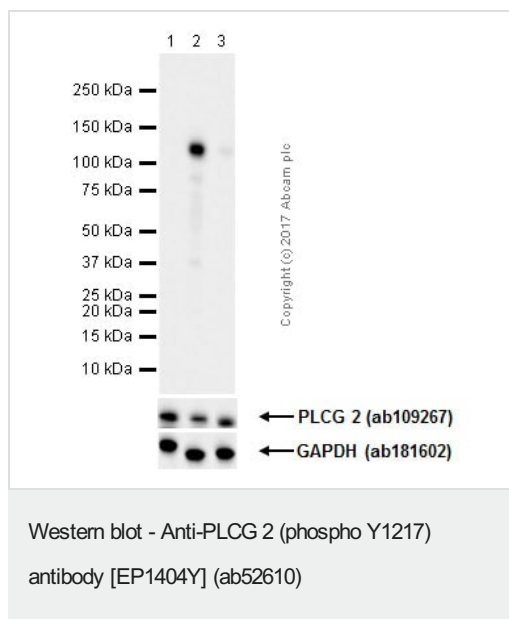
1 Abreviews 画像数 3

製品の概要

製品名	Anti-PLCG 2 (phospho Y1217) antibody [EP1404Y]
製品の詳細	Rabbit monoclonal [EP1404Y] to PLCG 2 (phospho Y1217)
由来種	Rabbit
特異性	ab52610 only detects PLCG2 phosphorylated on Tyrosine 1217.
アプリケーション	適用あり: WB, Dot blot 適用なし: Flow Cyt, ICC/IF or IHC-P
種交差性	交差種: Human
免疫原	Synthetic peptide. This information is proprietary to Abcam and/or its suppliers.
ポジティブ・コントロール	WB: Ramos and Raji cell lysates treated with pervanadate.
特記事項	<p>Our RabMAb[®] technology is a patented hybridoma-based technology for making rabbit monoclonal antibodies. For details on our patents, please refer to RabMAb[®] patents.</p> <p>The Life Science industry has been in the grips of a reproducibility crisis for a number of years. Abcam is leading the way in addressing this with our range of recombinant monoclonal antibodies and knockout edited cell lines for gold-standard validation. Please check that this product meets your needs before purchasing.</p> <p>If you have any questions, special requirements or concerns, please send us an inquiry and/or contact our Support team ahead of purchase. Recommended alternatives for this product can be found below, along with publications, customer reviews and Q&As</p> <p>Mouse, Rat: We have preliminary internal testing data to indicate this antibody may not react with these species. Please contact us for more information.</p>

製品の特性

製品の状態	Liquid
保存方法	Shipped at 4°C. Store at +4°C short term (1-2 weeks). Upon delivery aliquot. Store at -20°C. Stable for 12 months at -20°C.
バッファー	<p>pH: 7.20</p> <p>Preservative: 0.01% Sodium azide</p> <p>Constituents: 9% PBS, 40% Glycerol (glycerin, glycerine), 0.05% BSA, 50% Tissue culture</p>



All lanes : Anti-PLCG 2 (phospho Y1217) antibody [EP1404Y] (ab52610) at 1/1000 dilution

Lane 1 : Ramos (human Burkitt's lymphoma B lymphocyte) whole cell lysate

Lane 2 : Ramos treated with 1mM pervanadate for 30 min whole cell lysate

Lane 3 : Ramos treated with 1mM pervanadate for 30 min whole cell lysate. Then the membrane was incubated with alkaline phosphatase.

Lysates/proteins at 10 µg per lane.

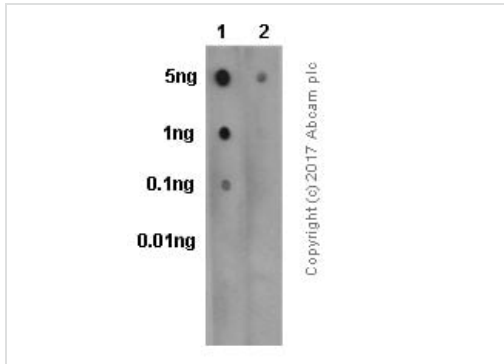
Secondary

All lanes : Goat Anti-Rabbit IgG H&L (HRP) (**ab97051**) at 1/20000 dilution

Predicted band size: 150 kDa

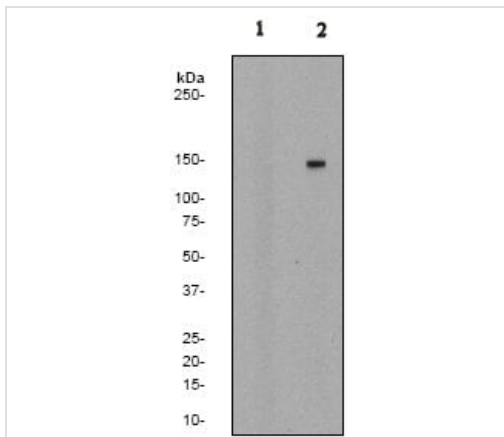
Observed band size: 150 kDa

Blocking and dilution buffer: 5% NFDM/TBST.



Dot Blot - Anti-PLCG 2 (phospho Y1217) antibody
[EP1404Y] (ab52610)

Dot blot analysis of PLCG 2 (phospho Y1217) phospho peptide (Lane 1) and PLCG 2 phospho peptide (Lane 2) labelling PLCG 2 (phospho Y1217) with ab52610 at a dilution of 1/1000. A Goat Anti-Rabbit IgG, (H+L), Peroxidase conjugated (**ab97051**) was used as the secondary antibody at a dilution of 1/20,000 dilution. Blocking buffer: 5% NFDM/TBST. Dilution buffer: 5% NFDM /TBST.



Western blot - Anti-PLCG 2 (phospho Y1217)
antibody [EP1404Y] (ab52610)

All lanes : Anti-PLCG 2 (phospho Y1217) antibody [EP1404Y] (ab52610) at 1/50000 dilution

Lane 1 : Raji cell lysate (untreated)

Lane 2 : Raji cell lysate treated with pervanadate

Lysates/proteins at 10 µg per lane.

Secondary

All lanes : HRP-labelled goat anti-rabbit at 1/2000 dilution

Predicted band size: 150 kDa

Please note: All products are "FOR RESEARCH USE ONLY. NOT FOR USE IN DIAGNOSTIC PROCEDURES"

Our Abpromise to you: Quality guaranteed and expert technical support

- Replacement or refund for products not performing as stated on the datasheet
- Valid for 12 months from date of delivery
- Response to your inquiry within 24 hours
- We provide support in Chinese, English, French, German, Japanese and Spanish
- Extensive multi-media technical resources to help you
- We investigate all quality concerns to ensure our products perform to the highest standards

If the product does not perform as described on this datasheet, we will offer a refund or replacement. For full details of the Abpromise, please visit <https://www.abcam.co.jp/abpromise> or contact our technical team.

Terms and conditions

- Guarantee only valid for products bought direct from Abcam or one of our authorized distributors