

Anti-PLCE1 antibody ab121476

画像数 4

製品の概要

製品名	Anti-PLCE1 antibody
製品の詳細	Rabbit polyclonal to PLCE1
由来種	Rabbit
アプリケーション	適用あり: IHC-P
種交差性	交差種: Human
免疫原	Recombinant fragment within Human PLCE1 aa 150-300. The exact immunogen sequence used to generate this antibody is proprietary information. If additional detail on the immunogen is needed to determine the suitability of the antibody for your needs, please contact our Scientific Support team to discuss your requirements.
ポジティブ・コントロール	IHC-P: Human lung, small intestine, urinary bladder, and skeletal muscle tissues.
特記事項	<p>The Life Science industry has been in the grips of a reproducibility crisis for a number of years. Abcam is leading the way in addressing this with our range of recombinant monoclonal antibodies and knockout edited cell lines for gold-standard validation. Please check that this product meets your needs before purchasing.</p> <p>If you have any questions, special requirements or concerns, please send us an inquiry and/or contact our Support team ahead of purchase. Recommended alternatives for this product can be found below, along with publications, customer reviews and Q&As</p>

製品の特性

製品の状態	Liquid
保存方法	Shipped at 4°C. Upon delivery aliquot and store at -20°C. Avoid repeated freeze / thaw cycles.
バッファー	<p>pH: 7.20</p> <p>Preservative: 0.02% Sodium azide</p> <p>Constituents: 40% Glycerol (glycerin, glycerine), 59% PBS</p>
精製度	Immunogen affinity purified
ポリ/モノ	ポリクローナル
アイソタイプ	IgG

アプリケーション

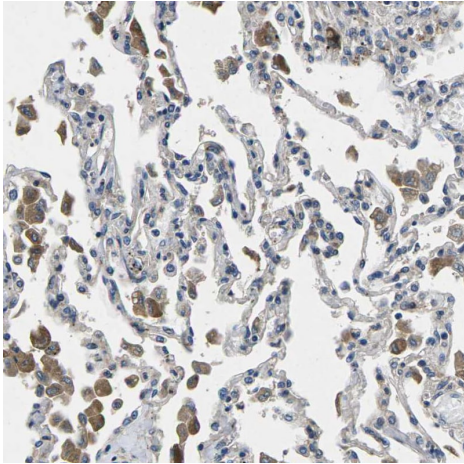
The Abpromise guarantee **Abpromise保証は、次のテスト済みアプリケーションにおけるab121476の使用に適用されます**
 アプリケーションノートには、推奨の開始希釈率がありますが、適切な希釈率につきましてはご検討ください。

アプリケーション	Abreviews	特記事項
IHC-P		1/50 - 1/200. Perform heat mediated antigen retrieval with citrate buffer pH 6 before commencing with IHC staining protocol.

ターゲット情報

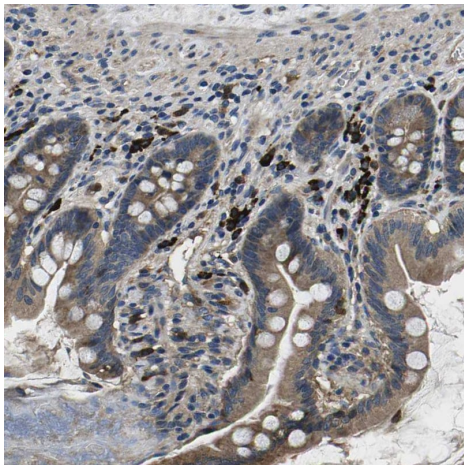
機能	The production of the second messenger molecules diacylglycerol (DAG) and inositol 1,4,5-trisphosphate (IP3) is mediated by activated phosphatidylinositol-specific phospholipase C enzymes. PLCE1 is a bifunctional enzyme which also regulates small GTPases of the Ras superfamily through its Ras guanine-exchange factor (RasGEF) activity. As an effector of heterotrimeric and small G-protein, it may play a role in cell survival, cell growth, actin organization and T-cell activation.
組織特異性	Widely expressed. Isoform 1 is broadly expressed and only absent in peripheral blood leukocytes. Isoform 2 is specifically expressed in placenta, lung and spleen.
関連疾患	Defects in PLCE1 are the cause of nephrotic syndrome type 3 (NPHS3) [MIM:610725]; also known as early-onset nephrotic syndrome type 3. Nephrotic syndrome, a malfunction of the kidney glomerular filter, leads to proteinuria, hypoalbuminemia, edema. End-stage kidney disease is observed in steroid-resistant nephrotic syndrome.
配列類似性	Contains 1 C2 domain. Contains 1 PI-PLC X-box domain. Contains 1 PI-PLC Y-box domain. Contains 2 Ras-associating domains. Contains 1 Ras-GEF domain.
ドメイン	The Ras-associating domain 1 is degenerated and may not bind HRAS. The Ras-associating domain 2 mediates interaction with GTP-bound HRAS, RAP1A, RAP2A and RAP2B and recruitment of HRAS to the cell membrane. The Ras-GEF domain has a GEF activity towards HRAS and RAP1A. Mediates activation of the mitogen-activated protein kinase pathway.
細胞内局在	Cytoplasm > cytosol. Cell membrane. Golgi apparatus membrane. Recruited to plasma membrane by activated HRAS and RAP2. Recruited to perinuclear membrane by activated RAP1A. Isoform 1 and isoform 2 associates with Golgi membranes.

画像



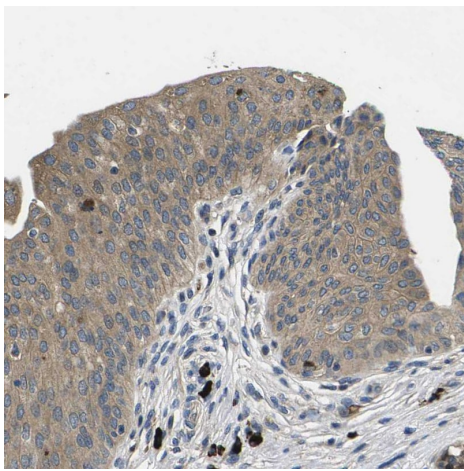
Immunohistochemistry (Formalin/PFA-fixed paraffin-embedded sections) analysis of human lung tissue labeling PLCE1 with ab121476 at 1/50 dilution. Heat mediated antigen retrieval performed with citrate buffer pH 6 before commencing with IHC staining protocol.

Immunohistochemistry (Formalin/PFA-fixed paraffin-embedded sections) - Anti-PLCE1 antibody (ab121476)



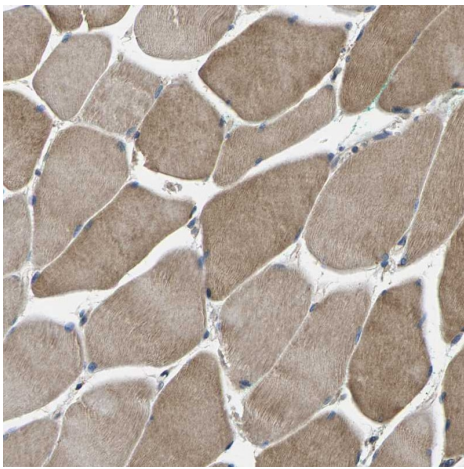
Immunohistochemistry (Formalin/PFA-fixed paraffin-embedded sections) analysis of human small intestine tissue labeling PLCE1 with ab121476 at 1/50 dilution. Heat mediated antigen retrieval performed with citrate buffer pH 6 before commencing with IHC staining protocol.

Immunohistochemistry (Formalin/PFA-fixed paraffin-embedded sections) - Anti-PLCE1 antibody (ab121476)



Immunohistochemistry (Formalin/PFA-fixed paraffin-embedded sections) - Anti-PLCE1 antibody (ab121476)

Immunohistochemistry (Formalin/PFA-fixed paraffin-embedded sections) analysis of human urinary bladder tissue labeling PLCE1 with ab121476 at 1/50 dilution. Heat mediated antigen retrieval performed with citrate buffer pH 6 before commencing with IHC staining protocol.



Immunohistochemistry (Formalin/PFA-fixed paraffin-embedded sections) - Anti-PLCE1 antibody (ab121476)

Immunohistochemistry (Formalin/PFA-fixed paraffin-embedded sections) analysis of human skeletal muscle tissue labeling PLCE1 with ab121476 at 1/50 dilution. Heat mediated antigen retrieval performed with citrate buffer pH 6 before commencing with IHC staining protocol.

Please note: All products are "FOR RESEARCH USE ONLY. NOT FOR USE IN DIAGNOSTIC PROCEDURES"

Our Abpromise to you: Quality guaranteed and expert technical support

- Replacement or refund for products not performing as stated on the datasheet
- Valid for 12 months from date of delivery
- Response to your inquiry within 24 hours

- We provide support in Chinese, English, French, German, Japanese and Spanish
- Extensive multi-media technical resources to help you
- We investigate all quality concerns to ensure our products perform to the highest standards

If the product does not perform as described on this datasheet, we will offer a refund or replacement. For full details of the Abpromise, please visit <https://www.abcam.co.jp/abpromise> or contact our technical team.

Terms and conditions

- Guarantee only valid for products bought direct from Abcam or one of our authorized distributors