

Anti-Plastin L antibody [EPR4278] ab109129

リコンビナント **RabMAb**

2 References [画像数 4](#)

製品の概要

製品名	Anti-Plastin L antibody [EPR4278]
製品の詳細	Rabbit monoclonal [EPR4278] to Plastin L
由来種	Rabbit
アプリケーション	適用あり: WB, IHC-P, Flow Cyt (Intra)
種交差性	交差種: Human
免疫原	Synthetic peptide. This information is proprietary to Abcam and/or its suppliers.
ポジティブ・コントロール	WB: THP-1, Jurkat, and K562 cell lysates, IHC-P: Human tonsil tissue; Flow Cyt (intra): MDA-MB-435S cells
特記事項	<p>This product is a recombinant monoclonal antibody, which offers several advantages including:</p> <ul style="list-style-type: none"> - High batch-to-batch consistency and reproducibility - Improved sensitivity and specificity - Long-term security of supply - Animal-free production <p>For more information see here.</p> <p>Our RabMAb[®] technology is a patented hybridoma-based technology for making rabbit monoclonal antibodies. For details on our patents, please refer to RabMAb[®] patents.</p> <p>Mouse, Rat: We have preliminary internal testing data to indicate this antibody may not react with these species. Please contact us for more information.</p>

製品の特性

製品の状態	Liquid
保存方法	Shipped at 4°C. Store at -20°C. Stable for 12 months at -20°C.
バッファー	<p>pH: 7.20</p> <p>Preservative: 0.05% Sodium azide</p> <p>Constituents: 0.1% BSA, 40% Glycerol (glycerin, glycerine), 9.85% Tris glycine, 50% Tissue culture supernatant</p>
精製度	Protein A purified
ポリ/モノ	モノクローナル

クローン名	EPR4278
アイソタイプ	IgG

アプリケーション

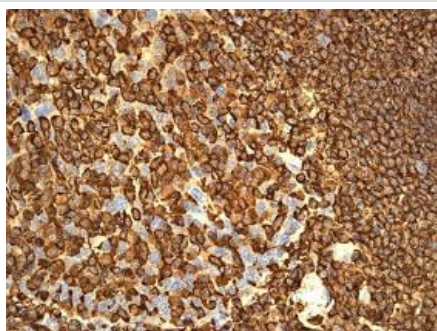
The Abpromise guarantee **Abpromise保証は、**次のテスト済みアプリケーションにおけるab109129の使用に適用されます
アプリケーションノートには、推奨の開始希釈率がありますが、適切な希釈率につきましてはご検討ください。

アプリケーション	Abreviews	特記事項
WB		1/10000 - 1/50000. Detects a band of approximately 70 kDa (predicted molecular weight: 70 kDa).
IHC-P		1/250 - 1/500. Perform heat mediated antigen retrieval before commencing with IHC staining protocol.
Flow Cyt (Intra)		1/1000.

ターゲット情報

機能	Actin-binding protein. Plays a role in the activation of T-cells in response to costimulation through TCR/CD3 and CD2 or CD28. Modulates the cell surface expression of IL2RA/CD25 and CD69.
組織特異性	Detected in intestinal microvilli, hair cell stereocilia, and fibroblast filopodia, in spleen and other lymph node-containing organs. Expressed in peripheral blood T lymphocytes, neutrophils, monocytes, B lymphocytes, and myeloid cells.
配列類似性	Contains 2 actin-binding domains. Contains 4 CH (calponin-homology) domains. Contains 2 EF-hand domains.
翻訳後修飾	Phosphorylated on a serine residue in response to costimulation through TCR/CD3 and CD2 or CD28. Serine phosphorylation promotes association with the actin cytoskeleton and targeting to peripheral cell projections. The N-terminus is blocked.
細胞内局在	Cytoplasm > cytoskeleton. Cell junction. Cell projection. Cell projection > ruffle membrane. Relocalizes to the immunological synapse between peripheral blood T lymphocytes and antibody-presenting cells in response to costimulation through TCR/CD3 and CD2 or CD28. Associated with the actin cytoskeleton at membrane ruffles (By similarity). Relocalizes to actin-rich cell projections upon serine phosphorylation.

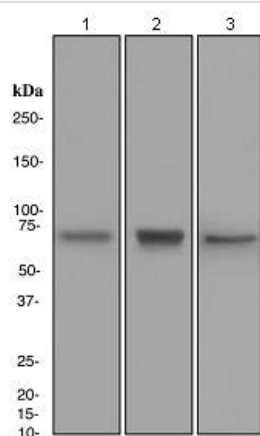
画像



Immunohistochemistry (Formalin/PFA-fixed paraffin-embedded sections) - Anti-Plastin L antibody [EPR4278] (ab109129)

Immunohistochemical staining of paraffin-embedded Human tonsil tissue using ab109129 at a dilution of 1/250.

Perform heat mediated antigen retrieval before commencing with IHC staining protocol.



Western blot - Anti-Plastin L antibody [EPR4278] (ab109129)

All lanes : Anti-Plastin L antibody [EPR4278] (ab109129) at 1/10000 dilution

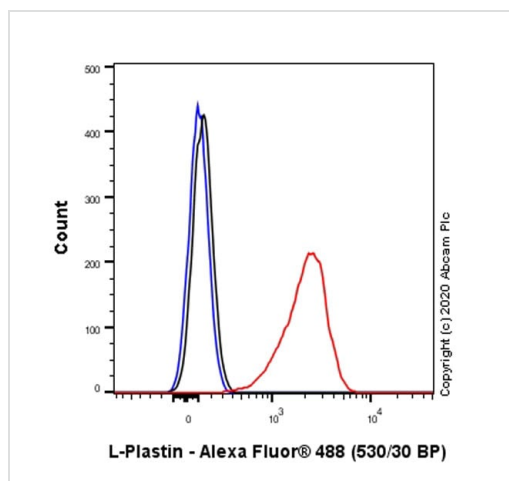
Lane 1 : THP-1 cell lysate

Lane 2 : Jurkat cell lysate

Lane 3 : K562 cell lysate

Lysates/proteins at 10 µg per lane.





Predicted band size: 70 kDa



Flow Cytometry (Intracellular) - Anti-Plastin L antibody [EPR4278] (ab109129)

Flow Cytometry analysis of MDA-MB-435S (Human mammary gland ductal carcinoma melanocyte) cells labeling Plastin L with purified ab109129 at 1/1000 dilution (1 µg/mL) (Red). Cells were fixed with 4% Paraformaldehyde and permeabilised with 90% Methanol. A Goat anti rabbit IgG (Alexa Fluor® 488, **ab150077**) secondary antibody was used at 1/2000. Isotype control - Rabbit monoclonal IgG (Black). Unlabeled control - Cell without incubation with primary antibody and secondary antibody (Blue).

Why choose a recombinant antibody?

 <p>Research with confidence Consistent and reproducible results</p>	 <p>Long-term and scalable supply Recombinant technology</p>
 <p>Success from the first experiment Confirmed specificity</p>	 <p>Ethical standards compliant Animal-free production</p>

Anti-Plastin L antibody [EPR4278] (ab109129)

Please note: All products are "FOR RESEARCH USE ONLY. NOT FOR USE IN DIAGNOSTIC PROCEDURES"

Our Abpromise to you: Quality guaranteed and expert technical support

- Replacement or refund for products not performing as stated on the datasheet
- Valid for 12 months from date of delivery
- Response to your inquiry within 24 hours
- We provide support in Chinese, English, French, German, Japanese and Spanish
- Extensive multi-media technical resources to help you
- We investigate all quality concerns to ensure our products perform to the highest standards

If the product does not perform as described on this datasheet, we will offer a refund or replacement. For full details of the Abpromise, please visit <https://www.abcam.co.jp/abpromise> or contact our technical team.

Terms and conditions

- Guarantee only valid for products bought direct from Abcam or one of our authorized distributors