

### Anti-Plasma Kallikrein 1B antibody [EPR5707] ab124938

リコンビナント RabMAb

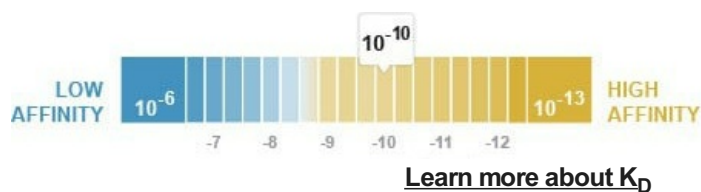
画像数 4

#### 製品の概要

製品名	Anti-Plasma Kallikrein 1B antibody [EPR5707]
製品の詳細	Rabbit monoclonal [EPR5707] to Plasma Kallikrein 1B
由来種	Rabbit
アプリケーション	<b>適用あり:</b> WB, IHC-P
種交差性	<b>交差種:</b> Human <b>非交差種:</b> Mouse, Rat
免疫原	Synthetic peptide within Human Plasma Kallikrein 1B aa 600-700 (C terminal). The exact sequence is proprietary.
ポジティブ・コントロール	Human breast cancer, Human plasma, Human ovary and fetal liver lysates; Human kidney tissue
特記事項	This product is a recombinant monoclonal antibody, which offers several advantages including: <ul style="list-style-type: none"> <li>- High batch-to-batch consistency and reproducibility</li> <li>- Improved sensitivity and specificity</li> <li>- Long-term security of supply</li> <li>- Animal-free production</li> </ul> For more information <a href="#">see here</a> . Our RabMAb <sup>®</sup> technology is a patented hybridoma-based technology for making rabbit monoclonal antibodies. For details on our patents, please refer to <a href="#">RabMAb<sup>®</sup> patents</a> .

#### 製品の特性

製品の状態	Liquid
保存方法	Shipped at 4°C. Store at -20°C. Stable for 12 months at -20°C.
解離定数 (K <sub>D</sub> 値)	K <sub>D</sub> = 1.09 x 10 <sup>-10</sup> M



[Learn more about K<sub>D</sub>](#)

バッファー	pH: 7.2 Preservative: 0.05% Sodium azide
-------	---

Constituents: 40% Glycerol (glycerin, glycerine), 9.85% Tris glycine, 50% Tissue culture supernatant

精製度	Protein A purified
ポリ/モノ	モノクローナル
クローン名	EPR5707
アイソタイプ	IgG

## アプリケーション

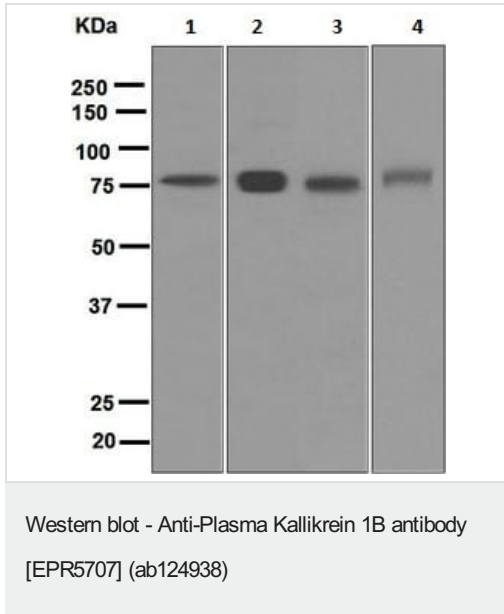
**The Abpromise guarantee** Abpromise保証は、次のテスト済みアプリケーションにおけるab124938の使用に適用されます  
アプリケーションノートには、推奨の開始希釈率がありますが、適切な希釈率につきましてはご検討ください。

アプリケーション	Abreviews	特記事項
WB		1/1000 - 1/10000. Detects a band of approximately 80 kDa (predicted molecular weight: 71 kDa).
IHC-P		1/50 - 1/100. Perform heat mediated antigen retrieval with citrate buffer pH 6 before commencing with IHC staining protocol.

## ターゲット情報

機能	The enzyme cleaves Lys-Arg and Arg-Ser bonds. It activates, in a reciprocal reaction, factor XII after its binding to a negatively charged surface. It also releases bradykinin from HMW kininogen and may also play a role in the renin-angiotensin system by converting prorenin into renin.
関連疾患	Defects in KLKB1 are the cause of prekallikrein deficiency (PKK deficiency) [MIM:612423]; also known as Fletcher factor deficiency. This disorder is a blood coagulation defect.
配列類似性	Belongs to the peptidase S1 family. Plasma kallikrein subfamily. Contains 4 apple domains. Contains 1 peptidase S1 domain.
細胞内局在	Secreted.

## 画像



**All lanes** : Anti-Plasma Kallikrein 1B antibody [EPR5707] (ab124938) at 1/1000 dilution

**Lane 1** : Human breast cancer lysate

**Lane 2** : Human plasma lysate

**Lane 3** : Human ovary lysate

**Lane 4** : Fetal liver tissue lysate

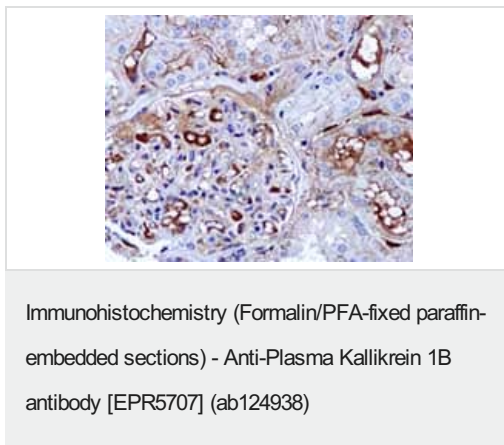
Lysates/proteins at 10 µg per lane.

#### Secondary

**All lanes** : HRP labelled Goat anti Rabbit IgG at 1/2000 dilution

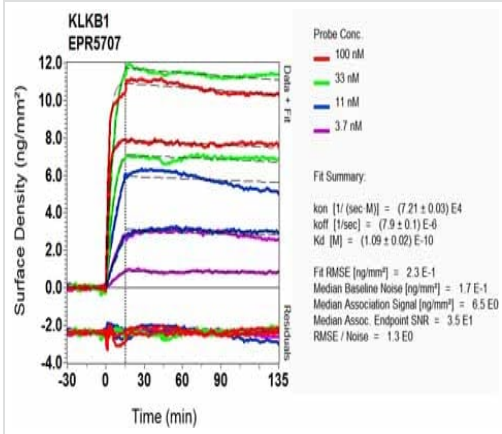
**Predicted band size:** 71 kDa

**Observed band size:** 80 kDa



ab124938, at 1/50 dilution, staining Plasma Kallikrein 1B in paraffin-embedded Human kidney tissue by Immunohistochemistry.

Perform heat mediated antigen retrieval with citrate buffer pH 6 before commencing with IHC staining protocol.



OI-RD Scanning - Anti-Plasma Kallikrein 1B antibody [EPR5707] (ab124938)

Equilibrium dissociation constant ( $K_D$ )

Learn more about  $K_D$

[Click here to learn more about  \$K\_D\$](#)

Why choose a recombinant antibody?

**Research with confidence**  
Consistent and reproducible results

**Long-term and scalable supply**  
Recombinant technology

**Success from the first experiment**  
Confirmed specificity

**Ethical standards compliant**  
Animal-free production

Anti-Plasma Kallikrein 1B antibody [EPR5707] (ab124938)

**Please note:** All products are "FOR RESEARCH USE ONLY. NOT FOR USE IN DIAGNOSTIC PROCEDURES"

**Our Abpromise to you: Quality guaranteed and expert technical support**

- Replacement or refund for products not performing as stated on the datasheet
- Valid for 12 months from date of delivery
- Response to your inquiry within 24 hours
- We provide support in Chinese, English, French, German, Japanese and Spanish

- Extensive multi-media technical resources to help you
- We investigate all quality concerns to ensure our products perform to the highest standards

If the product does not perform as described on this datasheet, we will offer a refund or replacement. For full details of the Abpromise, please visit <https://www.abcam.co.jp/abpromise> or contact our technical team.

### **Terms and conditions**

---

- Guarantee only valid for products bought direct from Abcam or one of our authorized distributors