




Anti-Plakophilin 2/PKP2 antibody ab189323

3 References [画像数 2](#)

製品の概要

製品名	Anti-Plakophilin 2/PKP2 antibody
製品の詳細	Goat polyclonal to Plakophilin 2/PKP2
由来種	Goat
アプリケーション	適用あり: WB, IHC-P
種交差性	交差種: Mouse, Human 交差が予測される動物種: Rabbit, Horse, Hamster, Cow, Dog, Gorilla, Bat 
免疫原	Synthetic peptide corresponding to Human Plakophilin 2/PKP2 aa 100-200 (internal sequence) (Cysteine residue). (NP_001005242.2; NP_004563.2). Database link: Q99959 <div>  Run BLAST with  Run BLAST with </div>
ポジティブ・コントロール	Human prostate tissue; Mouse and Rat heart lysates.
特記事項	<p>The Life Science industry has been in the grips of a reproducibility crisis for a number of years. Abcam is leading the way in addressing this with our range of recombinant monoclonal antibodies and knockout edited cell lines for gold-standard validation. Please check that this product meets your needs before purchasing.</p> <p>If you have any questions, special requirements or concerns, please send us an inquiry and/or contact our Support team ahead of purchase. Recommended alternatives for this product can be found below, along with publications, customer reviews and Q&As</p>

製品の特性

製品の状態	Liquid
保存方法	Shipped at 4°C. Store at +4°C short term (1-2 weeks). Upon delivery aliquot. Store at -20°C long term. Avoid freeze / thaw cycle.
バッファー	pH: 7.30 Preservative: 0.02% Sodium azide Constituents: 99% Tris buffered saline, 0.5% BSA
精製度	Immunogen affinity purified
ポリ/モノ	ポリクローナル
アイソタイプ	IgG

アプリケーション

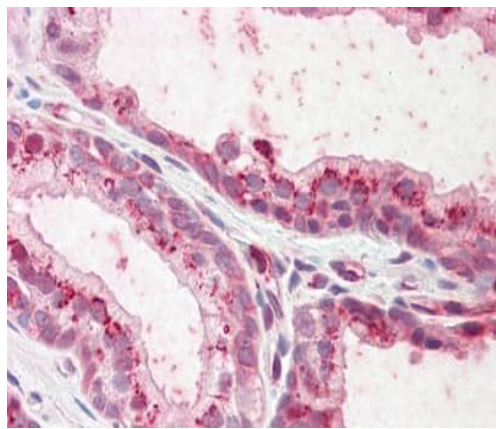
The Abpromise guarantee **Abpromise保証は、** 次のテスト済みアプリケーションにおけるab189323の使用に適用されます
アプリケーションノートには、推奨の開始希釈率がありますが、適切な希釈率につきましてはご検討ください。

アプリケーション	Abreviews	特記事項
WB		Use a concentration of 0.3 - 1 µg/ml. Predicted molecular weight: 97 kDa.
IHC-P		Use a concentration of 3.75 µg/ml.

ターゲット情報

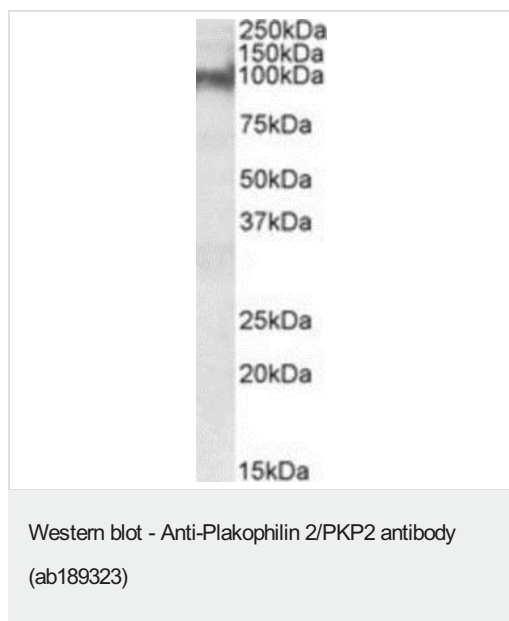
機能	May play a role in junctional plaques.
組織特異性	Detected in heart right ventricle (at protein level). Widely expressed. Found at desmosomal plaques in simple and stratified epithelia and in non-epithelial tissues such as myocardium and lymph node follicles. In most stratified epithelia found in the desmosomes of the basal cell layer and seems to be absent from suprabasal strata.
関連疾患	Familial arrhythmogenic right ventricular dysplasia 9
配列類似性	Belongs to the beta-catenin family. Contains 8 ARM repeats.
細胞内局在	Nucleus. Cell junction > desmosome. Nuclear and associated with desmosomes.

画像



Immunohistochemical analysis of formalin-fixed, paraffin-embedded Human prostate tissue, labeling Plakophilin 2/PKP2 with ab189323 at 3.75 µg/ml.

Immunohistochemistry (Formalin/PFA-fixed paraffin-embedded sections) - Anti-Plakophilin 2/PKP2 antibody (ab189323)



Anti-Plakophilin 2/PKP2 antibody (ab189323) at 0.3 µg/ml + Mouse heart lysate at 35 µg

Developed using the ECL technique.

Predicted band size: 97 kDa

Please note: All products are "FOR RESEARCH USE ONLY. NOT FOR USE IN DIAGNOSTIC PROCEDURES"

Our Abpromise to you: Quality guaranteed and expert technical support

- Replacement or refund for products not performing as stated on the datasheet
- Valid for 12 months from date of delivery
- Response to your inquiry within 24 hours
- We provide support in Chinese, English, French, German, Japanese and Spanish
- Extensive multi-media technical resources to help you
- We investigate all quality concerns to ensure our products perform to the highest standards

If the product does not perform as described on this datasheet, we will offer a refund or replacement. For full details of the Abpromise, please visit <https://www.abcam.co.jp/abpromise> or contact our technical team.

Terms and conditions

- Guarantee only valid for products bought direct from Abcam or one of our authorized distributors