


Anti-Placental alkaline phosphatase (PLAP) antibody [SP15] ab16695

リコンビナント **RabMAb**

11 References 画像数 4

製品の概要

製品名	Anti-Placental alkaline phosphatase (PLAP) antibody [SP15]
製品の詳細	Rabbit monoclonal [SP15] to Placental alkaline phosphatase (PLAP)
由来種	Rabbit
特異性	This antibody reacts with a membrane-bound isoenzyme of placental alkaline phosphatase (PLAP) occurring in the placenta during the 3rd trimester of gestation. It is useful in the identification of testicular germ cell tumors. Unlike germ cell tumors, PLAP-positive somatic cell tumors uniformly express epithelial membrane antigen (EMA).
アプリケーション	適用あり: Flow Cyt (Intra), IHC-P 適用なし: WB
種交差性	交差種: Human 交差が予測される動物種: Mouse, Rat 
免疫原	Recombinant fragment. This information is considered to be commercially sensitive.
エピトープ	Not determined
ポジティブ・コントロール	IHC-P: Seminoma and placenta tissues. Flow Cyt (intra): HeLa cells
特記事項	<p>This product was switched from a hybridoma to recombinant production method on 7th March 2019.</p> <p>This product is a recombinant monoclonal antibody, which offers several advantages including:</p> <ul style="list-style-type: none">- High batch-to-batch consistency and reproducibility- Improved sensitivity and specificity- Long-term security of supply- Animal-free production <p>For more information see here.</p> <p>Our RabMAb[®] technology is a patented hybridoma-based technology for making rabbit monoclonal antibodies. For details on our patents, please refer to RabMAb[®] patents.</p> <p>This product is FOR RESEARCH USE ONLY. For commercial use, please contact partnerships@abcam.com.</p>

製品の特性

製品の状態	Liquid
保存方法	Shipped at 4°C. Upon delivery aliquot and store at -20°C. Avoid freeze / thaw cycles.
バッファー	pH: 7.20 Preservative: 0.1% Sodium azide Constituents: 1% BSA, PBS
精製度	Protein A purified
一次抗体 備考	This antibody reacts with a membrane-bound isoenzyme of placental alkaline phosphatase (PLAP) occurring in the placenta during the 3rd trimester of gestation. It is useful in the identification of testicular germ cell tumors. Unlike germ cell tumors, PLAP-positive somatic cell tumors uniformly express epithelial membrane antigen (EMA).
ポリ/モノ	モノクローナル
クローン名	SP15
アイソタイプ	IgG

アプリケーション

The Abpromise guarantee **Abpromise保証は、次のテスト済みアプリケーションにおけるab16695の使用に適用されます**
 アプリケーションノートには、推奨の開始希釈率がありますが、適切な希釈率につきましてはご検討ください。

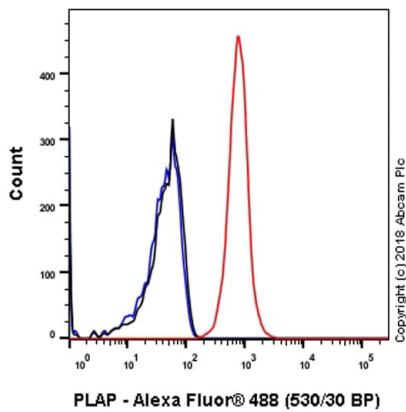
アプリケーション	Abreviews	特記事項
Flow Cyt (Intra)		1/200.
IHC-P		1/100. Perform heat mediated antigen retrieval with citrate buffer pH 6 before commencing with IHC staining protocol. Boil tissue sections in 10mM citrate buffer, pH 6.0 for 10 min followed by cooling at RT for 20 min.

追加情報 Is unsuitable for WB.

ターゲット情報

配列類似性 Belongs to the alkaline phosphatase family.
細胞内局在 Cell membrane.

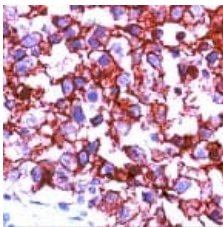
画像



Flow Cytometry (Intracellular) - Anti-Placental alkaline phosphatase (PLAP) antibody [SP15] (ab16695)

Intracellular flow cytometry analysis of HeLa (human cervix adenocarcinoma epithelial cell) labeling Placental alkaline phosphatase (PLAP) with purified ab16695 at 1/200 dilution (0.6µg/ml) (red). Cells were fixed with 4% paraformaldehyde and permeabilised with 90% methanol. Goat anti rabbit IgG (Alexa Fluor® 488, [ab150077](#)) at 1/2000 dilution was used as a secondary antibody. Isotype control -Rabbit monoclonal IgG ([ab172730](#)) / Black. Unlabeled control -Unlabelled cells / blue.

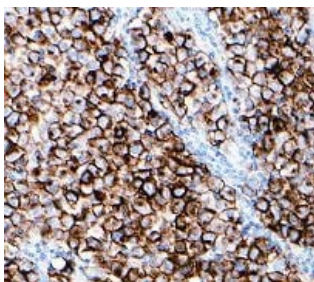
This image was generated from the hybridoma version.



Immunohistochemistry (Formalin/PFA-fixed paraffin-embedded sections) - Anti-Placental alkaline phosphatase (PLAP) antibody [SP15] (ab16695)

Human seminoma stained with ab16695.

This image was generated from the hybridoma version.



Immunohistochemistry (Formalin/PFA-fixed paraffin-embedded sections) - Anti-Placental alkaline phosphatase (PLAP) antibody [SP15] (ab16695)

Immunohistochemical analysis of paraffin-embedded human seminoma tissue labeling Alkaline Phosphatase with [ab137879](#) at 1/50 dilution.

This image was generated from the hybridoma version.

Why choose a recombinant antibody?



Research with confidence
Consistent and reproducible results



Long-term and scalable supply
Recombinant technology



Success from the first experiment
Confirmed specificity



Ethical standards compliant
Animal-free production

Anti-Placental alkaline phosphatase (PLAP)
antibody [SP15] (ab16695)

Please note: All products are "FOR RESEARCH USE ONLY. NOT FOR USE IN DIAGNOSTIC PROCEDURES"

Our Abpromise to you: Quality guaranteed and expert technical support

- Replacement or refund for products not performing as stated on the datasheet
- Valid for 12 months from date of delivery
- Response to your inquiry within 24 hours
- We provide support in Chinese, English, French, German, Japanese and Spanish
- Extensive multi-media technical resources to help you
- We investigate all quality concerns to ensure our products perform to the highest standards

If the product does not perform as described on this datasheet, we will offer a refund or replacement. For full details of the Abpromise, please visit <https://www.abcam.co.jp/abpromise> or contact our technical team.

Terms and conditions

- Guarantee only valid for products bought direct from Abcam or one of our authorized distributors