

Anti-Placental alkaline phosphatase (PLAP) antibody [8B6] ab33

6 References 画像数 1

製品の概要

製品名	Anti-Placental alkaline phosphatase (PLAP) antibody [8B6]
製品の詳細	Mouse monoclonal [8B6] to Placental alkaline phosphatase (PLAP)
由来種	Mouse
アプリケーション	適用あり: WB
種交差性	交差種: Human
免疫原	Tissue, cells or virus corresponding to Placental alkaline phosphatase (PLAP). Fresh Hep-2 cells followed by booster injections of fresh Hep-2 cells that have had their surface expression of PLAP boosted in culture.
ポジティブ・コントロール	WB: Human placenta tissue lysate.
特記事項	<p>This antibody clone is manufactured by Abcam. If you require a custom buffer formulation or conjugation for your experiments, please contact orders@abcam.com.</p> <p>The Life Science industry has been in the grips of a reproducibility crisis for a number of years. Abcam is leading the way in addressing this with our range of recombinant monoclonal antibodies and knockout edited cell lines for gold-standard validation. Please check that this product meets your needs before purchasing.</p> <p>If you have any questions, special requirements or concerns, please send us an inquiry and/or contact our Support team ahead of purchase. Recommended alternatives for this product can be found below, along with publications, customer reviews and Q&As</p>

製品の特性

製品の状態	Liquid
保存方法	Shipped at 4°C. Store at +4°C short term (1-2 weeks). Upon delivery aliquot. Store at -20°C long term. Avoid freeze / thaw cycle.
バッファー	Constituent: 0.02% PBS
精製度	Protein G purified
ポリ/モノ	モノクローナル
クローン名	8B6
ミエローマ	P3-NS1/1-Ag4-1
アイソタイプ	IgG2a

アプリケーション

The Abpromise guarantee

Abpromise保証は、次のテスト済みアプリケーションにおけるab33の使用に適用されます

アプリケーションノートには、推奨の開始希釈率がありますが、適切な希釈率につきましてはご検討ください。

アプリケーション	Abreviews	特記事項
WB		Use a concentration of 5 µg/ml. Detects a band of approximately 65 kDa (predicted molecular weight: 58 kDa).

ターゲット情報

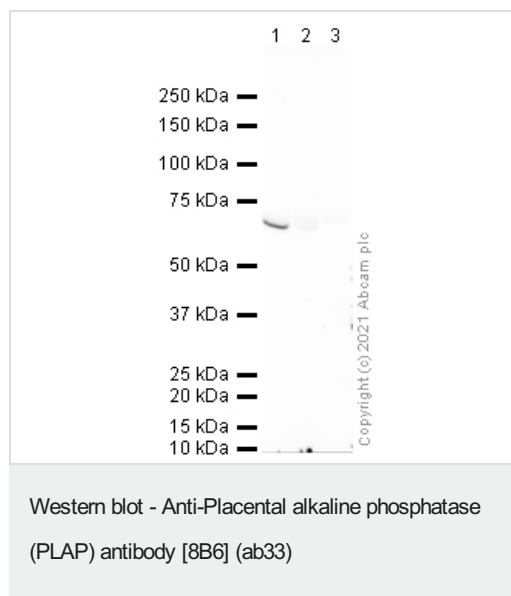
配列類似性

Belongs to the alkaline phosphatase family.

細胞内局在

Cell membrane.

画像



All lanes : Anti-Placental alkaline phosphatase (PLAP) antibody [8B6] (ab33) at 5 µg/ml

Lane 1 : Human placenta tissue lysate

Lane 2 : Human kidney tissue lysate (negative control)

Lane 3 : Human liver tissue lysate (negative control)

Lysates/proteins at 10 µg per lane.

Secondary

All lanes : Goat polyclonal to Mouse IgG - H&L - Pre-Adsorbed (HRP) at 1/5000 dilution

Predicted band size: 58 kDa

Observed band size: 65 kDa

Exposure time: 8 minutes

Blocking buffer: 3% milk.

Gel Type: MOPS.

Please note: All products are "FOR RESEARCH USE ONLY. NOT FOR USE IN DIAGNOSTIC PROCEDURES"

Our Abpromise to you: Quality guaranteed and expert technical support

- Replacement or refund for products not performing as stated on the datasheet
- Valid for 12 months from date of delivery
- Response to your inquiry within 24 hours

- We provide support in Chinese, English, French, German, Japanese and Spanish
- Extensive multi-media technical resources to help you
- We investigate all quality concerns to ensure our products perform to the highest standards

If the product does not perform as described on this datasheet, we will offer a refund or replacement. For full details of the Abpromise, please visit <https://www.abcam.co.jp/abpromise> or contact our technical team.

Terms and conditions

- Guarantee only valid for products bought direct from Abcam or one of our authorized distributors