

Anti-PLAC8 antibody ab122652

5 References [画像数 2](#)

製品の概要

製品名	Anti-PLAC8 antibody
製品の詳細	Rabbit polyclonal to PLAC8
由来種	Rabbit
アプリケーション	適用あり: IHC-P, WB
種交差性	交差種: Human
免疫原	antigen, corresponding to amino acids 1-115 of Human PLAC8. (Q9NZF1)
ポジティブ・コントロール	Human tonsil tissue. RT-4 cell lysate. Human liver and tonsil tissue lysate.
特記事項	<p>The Life Science industry has been in the grips of a reproducibility crisis for a number of years. Abcam is leading the way in addressing this with our range of recombinant monoclonal antibodies and knockout edited cell lines for gold-standard validation. Please check that this product meets your needs before purchasing.</p> <p>If you have any questions, special requirements or concerns, please send us an inquiry and/or contact our Support team ahead of purchase. Recommended alternatives for this product can be found below, along with publications, customer reviews and Q&As</p>

製品の特性

製品の状態	Liquid
保存方法	Shipped at 4°C. Upon delivery aliquot and store at -20°C. Avoid freeze / thaw cycles.
バッファー	pH: 7.20 Preservative: 0.02% Sodium azide Constituents: 59% PBS, 40% Glycerol (glycerin, glycerine)
精製度	Immunogen affinity purified
ポリ/モノ	ポリクローナル
アイソタイプ	IgG

アプリケーション

The Abpromise guarantee **Abpromise保証は、次のテスト済みアプリケーションにおけるab122652の使用に適用されます**
 アプリケーションノートには、推奨の開始希釈率がありますが、適切な希釈率につきましてはご検討ください。

アプリケーション	Abreviews	特記事項
IHC-P		1/500 - 1/1000. Perform heat mediated antigen retrieval with citrate buffer pH 6 before commencing with IHC staining protocol.
WB		Use a concentration of 0.04 - 0.4 µg/ml.

ターゲット情報

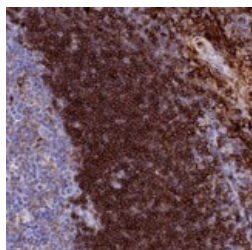
組織特異性

Expressed at high levels in plasmacytoid dendritic cells. High expression in spleen, lymph nodes, peripheral blood leukocytes, and bone marrow, with lower expression in thymus, appendix, and fetal liver.

配列類似性

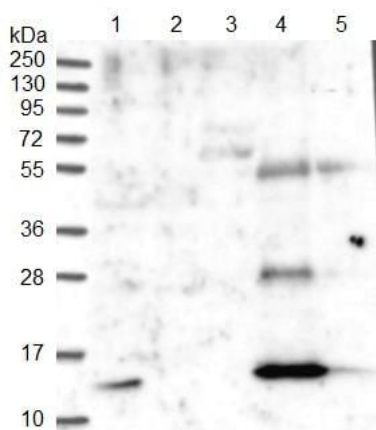
Belongs to the cornifelin family.

画像



ab122652 at 1/200 dilution staining PLAC8 in paraffin-embedded Human tonsil tissue by Immunohistochemistry.

Immunohistochemistry (Formalin/PFA-fixed paraffin-embedded sections) - Anti-PLAC8 antibody (ab122652)



All lanes : Anti-PLAC8 antibody (ab122652) at 1/250 dilution

Lane 1 : RT-4 cell lysate

Lane 2 : U-251 MG cell lysate

Lane 3 : Human plasma lysate

Lane 4 : Human liver tissue lysate

Lane 5 : Human tonsil tissue lysate

Developed using the ECL technique.

Western blot - Anti-PLAC8 antibody (ab122652)

Please note: All products are "FOR RESEARCH USE ONLY. NOT FOR USE IN DIAGNOSTIC PROCEDURES"

Our Abpromise to you: Quality guaranteed and expert technical support

- Replacement or refund for products not performing as stated on the datasheet
- Valid for 12 months from date of delivery
- Response to your inquiry within 24 hours

- We provide support in Chinese, English, French, German, Japanese and Spanish
- Extensive multi-media technical resources to help you
- We investigate all quality concerns to ensure our products perform to the highest standards

If the product does not perform as described on this datasheet, we will offer a refund or replacement. For full details of the Abpromise, please visit <https://www.abcam.co.jp/abpromise> or contact our technical team.

Terms and conditions

- Guarantee only valid for products bought direct from Abcam or one of our authorized distributors