




Anti-PLA1A/NMD antibody ab233145

画像数 4

製品の概要

製品名	Anti-PLA1A/NMD antibody
製品の詳細	Rabbit polyclonal to PLA1A/NMD
由来種	Rabbit
アプリケーション	適用あり: WB, IHC-P
種交差性	交差種: Human, Pig 交差が予測される動物種: Orangutan 
免疫原	Recombinant fragment (His-tag) corresponding to Human PLA1A/NMD aa 300 to the C-terminus. (Expressed in E.coli). Database link: Q53H76  Run BLAST with  Run BLAST with
ポジティブ・コントロール	WB: HEK-293T cell lysate; Pig liver lysate; Recombinant human PLA1A/NMD protein. IHC-P: Human lung and kidney tissues.
特記事項	<p>The Life Science industry has been in the grips of a reproducibility crisis for a number of years. Abcam is leading the way in addressing this with our range of recombinant monoclonal antibodies and knockout edited cell lines for gold-standard validation. Please check that this product meets your needs before purchasing.</p> <p>If you have any questions, special requirements or concerns, please send us an inquiry and/or contact our Support team ahead of purchase. Recommended alternatives for this product can be found below, along with publications, customer reviews and Q&As</p>

製品の特性

製品の状態	Liquid
保存方法	Shipped at 4°C. Store at +4°C short term (1-2 weeks). Upon delivery aliquot. Store at -20°C long term. Avoid freeze / thaw cycle.
バッファー	pH: 7.40 Preservative: 0.02% Sodium azide Constituents: 44.12% PBS, 55.77% Glycerol (glycerin, glycerine)
精製度	Immunogen affinity purified
特記事項 (精製)	ab233145 was purified by antigen-specific affinity chromatography followed by Protein A affinity chromatography.

ポリモノ
アイソタイプ

ポリクローナル
IgG

アプリケーション

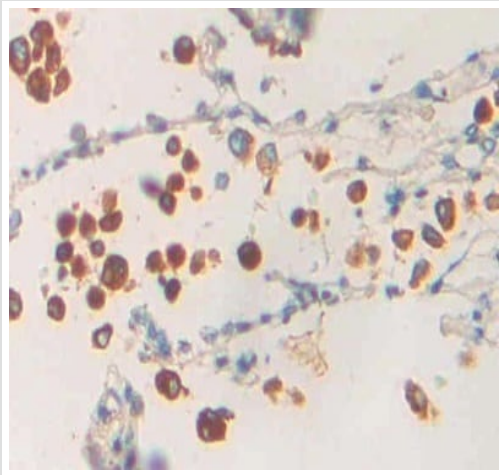
The Abpromise guarantee **Abpromise保証は、** 次のテスト済みアプリケーションにおけるab233145の使用に適用されます
アプリケーションノートには、推奨の開始希釈率がありますが、適切な希釈率につきましてはご検討ください。

アプリケーション	Abreviews	特記事項
WB		Use a concentration of 0.2 - 2 µg/ml. Predicted molecular weight: 50 kDa.
IHC-P		Use a concentration of 5 - 20 µg/ml.

ターゲット情報

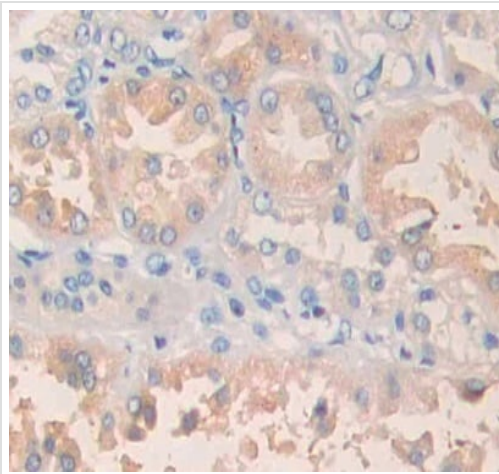
機能	Hydrolyzes the ester bond at the sn-1 position of glycerophospholipids and produces 2-acyl lysophospholipids. Hydrolyzes phosphatidylserine (PS) in the form of liposomes and 1-acyl-2 lysophosphatidylserine (lyso-PS), but not triolein, phosphatidylcholine (PC), phosphatidylethanolamine (PE), phosphatidic acid (PA) or phosphatidylinositol (PI). Isoform 2 hydrolyzes lyso-PS but not PS. Hydrolysis of lyso-PS in peritoneal mast cells activated by receptors for IgE leads to stimulate histamine production.
組織特異性	Widely expressed. Expressed in placenta, prostate and liver. Weakly or not expressed in skin, leukocytes, platelets, colon, spleen, lung, muscle and kidney.
配列類似性	Belongs to the AB hydrolase superfamily. Lipase family.
細胞内局在	Secreted.

画像



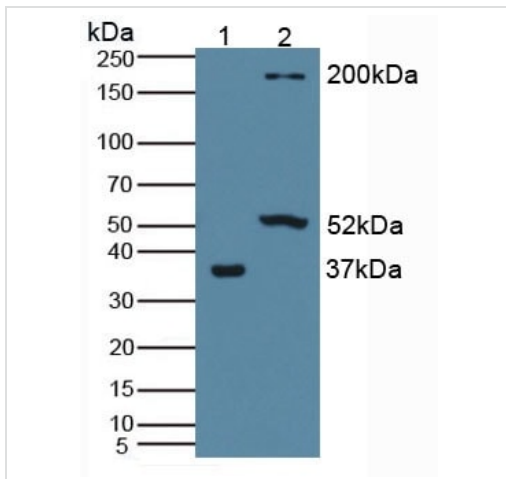
Immunohistochemistry (Formalin/PFA-fixed paraffin-embedded sections) - Anti-PLA1A/NMD antibody (ab233145)

Formalin-fixed, paraffin-embedded human lung tissue stained for PLA1A/NMD using ab233145 at 20 µg/ml in immunohistochemical analysis. DAB staining.



Immunohistochemistry (Formalin/PFA-fixed paraffin-embedded sections) - Anti-PLA1A/NMD antibody (ab233145)

Paraffin-embedded human kidney tissue stained for PLA1A/NMD using ab233145 at 20 µg/ml in immunohistochemical analysis. DAB staining.



Western blot - Anti-PLA1A/NMD antibody
(ab233145)

All lanes : Anti-PLA1A/NMD antibody (ab233145) at 1.5 µg/ml

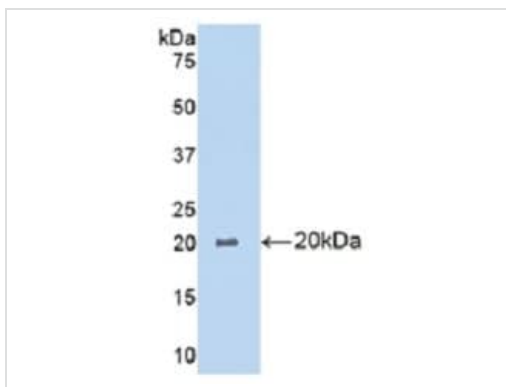
Lane 1 : HEK-293T (human epithelial cell line from embryonic kidney transformed with large T antigen) cell lysate

Lane 2 : Pig liver lysate

Secondary

All lanes : HRP-Linked Guinea pig anti-rabbit at 1/1000 dilution

Predicted band size: 50 kDa



Western blot - Anti-PLA1A/NMD antibody
(ab233145)

Anti-PLA1A/NMD antibody (ab233145) at 2 µg/ml + Recombinant human PLA1A/NMD protein

Predicted band size: 50 kDa

Please note: All products are "FOR RESEARCH USE ONLY. NOT FOR USE IN DIAGNOSTIC PROCEDURES"

Our Abpromise to you: Quality guaranteed and expert technical support

- Replacement or refund for products not performing as stated on the datasheet
- Valid for 12 months from date of delivery
- Response to your inquiry within 24 hours
- We provide support in Chinese, English, French, German, Japanese and Spanish
- Extensive multi-media technical resources to help you
- We investigate all quality concerns to ensure our products perform to the highest standards

If the product does not perform as described on this datasheet, we will offer a refund or replacement. For full details of the Abpromise, please visit <https://www.abcam.co.jp/abpromise> or contact our technical team.

Terms and conditions

- Guarantee only valid for products bought direct from Abcam or one of our authorized distributors