

Anti-PKLR antibody ab125697

面格新 2

医薬用外劇物

製品の概要

製品名	Anti-PKLR antibody
製品の詳細	Rabbit polyclonal to PKLR
由来種	Rabbit
アプリケーション	適用あり: WB, IHC-P, ICC/IF
種交差性	交差種: Human
免疫原	Recombinant fragment containing a sequence corresponding to a region within amino acids 178-510 of Human PKLR.(Uniprot:P30613)
ポジティブ・コントロール	A549 cell lysate, HeLa whole cell lysate (ab150035), HepG2 whole cell lysate (ab7900), HTC116 cell lysate and Human breast cancer tissue.
特記事項	<p>The Life Science industry has been in the grips of a reproducibility crisis for a number of years. Abcam is leading the way in addressing this with our range of recombinant monoclonal antibodies and knockout edited cell lines for gold-standard validation. Please check that this product meets your needs before purchasing.</p> <p>If you have any questions, special requirements or concerns, please send us an inquiry and/or contact our Support team ahead of purchase. Recommended alternatives for this product can be found below, along with publications, customer reviews and Q&As</p>

製品の特性

製品の状態	Liquid
保存方法	Shipped at 4°C. Upon delivery aliquot and store at -20°C or -80°C. Avoid repeated freeze / thaw cycles.
バッファー	<p>pH: 7.00</p> <p>Preservative: 0.01% Thimerosal (merthiolate)</p> <p>Constituents: 1.21% Tris, 0.75% Glycine, 20% Glycerol (glycerin, glycerine)</p>
精製度	Immunogen affinity purified
ポリ/モノ	ポリクローナル
アイソタイプ	IgG

アプリケーション

The Abpromise guarantee

Abpromise保証は、次のテスト済みアプリケーションにおけるab125697の使用に適用されます

アプリケーションノートには、推奨の開始希釈率がありますが、適切な希釈率につきましてはご確認ください。

アプリケーション	Abreviews	特記事項
WB		1/500 - 1/3000. Predicted molecular weight: 62 kDa.
IHC-P		1/100 - 1/500. Perform antigen retrieval using heat mediated 10mM Citrate buffer(pH6.0) or Tris-EDTA buffer(pH8.0).
ICC/IF		1/100 - 1/500.

ターゲット情報

機能

Plays a key role in glycolysis.

パスウェイ

Carbohydrate degradation; glycolysis; pyruvate from D-glyceraldehyde 3-phosphate: step 5/5.

関連疾患

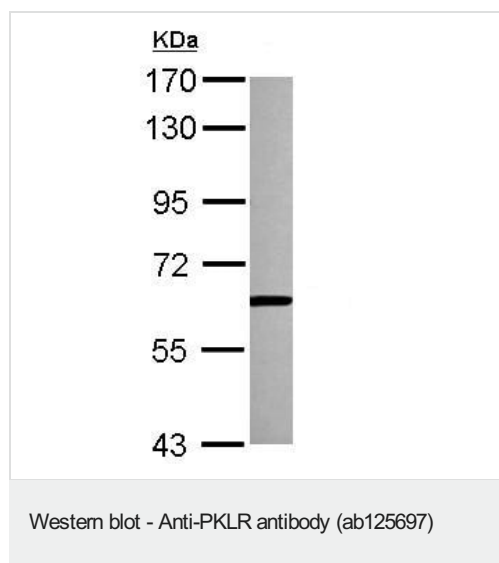
Defects in PKLR are the cause of pyruvate kinase hyperactivity (PKHYP) [MIM:102900]; also known as high red cell ATP syndrome. This autosomal dominant phenotype is characterized by increase of red blood cell ATP.

Defects in PKLR are the cause of pyruvate kinase deficiency of red cells (PKRD) [MIM:266200]. A frequent cause of hereditary non-spherocytic hemolytic anemia. Clinically, pyruvate kinase-deficient patients suffer from a highly variable degree of chronic hemolysis, ranging from severe neonatal jaundice and fatal anemia at birth, severe transfusion-dependent chronic hemolysis, moderate hemolysis with exacerbation during infection, to a fully compensated hemolysis without apparent anemia.

配列類似性

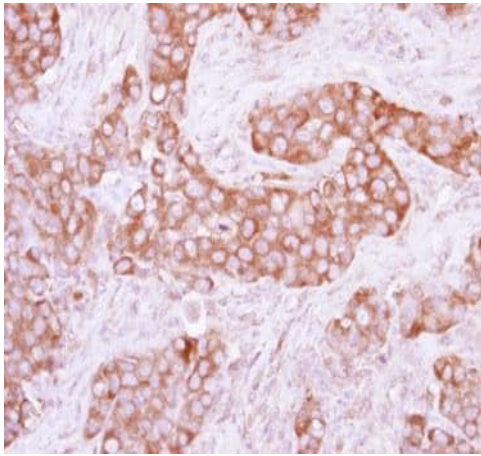
Belongs to the pyruvate kinase family.

画像



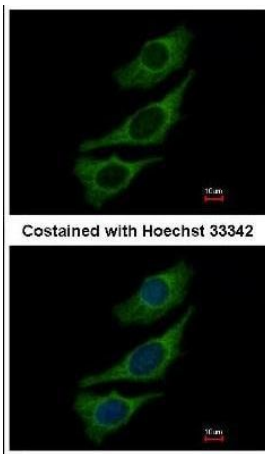
Anti-PKLR antibody (ab125697) at 1/1000 dilution + A549 cell lysate at 30 µg

Predicted band size: 62 kDa



Immunohistochemistry (Formalin/PFA-fixed paraffin-embedded sections) - Anti-PKLR antibody (ab125697)

ab125697, at 1/250 dilution, staining PKLR in Formalin-fixed, Paraffin-embedded Human breast cancer tissue by Immunohistochemistry.



Immunocytochemistry/ Immunofluorescence - Anti-PKLR antibody (ab125697)

ab125697, at 1/500 dilution, staining PKLR in Methanol-fixed HeLa cells by Immunocytochemistry/Immunofluorescence.

Please note: All products are "FOR RESEARCH USE ONLY. NOT FOR USE IN DIAGNOSTIC PROCEDURES"

Our Abpromise to you: Quality guaranteed and expert technical support

- Replacement or refund for products not performing as stated on the datasheet
- Valid for 12 months from date of delivery
- Response to your inquiry within 24 hours
- We provide support in Chinese, English, French, German, Japanese and Spanish
- Extensive multi-media technical resources to help you
- We investigate all quality concerns to ensure our products perform to the highest standards

If the product does not perform as described on this datasheet, we will offer a refund or replacement. For full details of the Abpromise,

please visit <https://www.abcam.co.jp/abpromise> or contact our technical team.

Terms and conditions

- Guarantee only valid for products bought direct from Abcam or one of our authorized distributors