

Anti-PKD2 (phospho S876) antibody [EP1496Y] ab51251

リコンビナント RabMAb

★★★★★ **4 Abreviews** **3 References** **画像数 4**

製品の概要

製品名	Anti-PKD2 (phospho S876) antibody [EP1496Y]
製品の詳細	Rabbit monoclonal [EP1496Y] to PKD2 (phospho S876)
由来種	Rabbit
アプリケーション	適用あり: WB, IP 適用なし: Flow Cyt or ICC/IF
種交差性	交差種: Mouse, Rat, Human
免疫原	Synthetic peptide. This information is proprietary to Abcam and/or its suppliers.
ポジティブ・コントロール	WB: HeLa treated with 100nM calyculin A, HEK-293 treated with 100nM calyculin A IP: ab51251 + HEK-293 (Human embryonic kidney epithelial cell) treated with 50nM Calyculin A for 3 hours whole cell lysate.
特記事項	<p>We are constantly working hard to ensure we provide our customers with best in class antibodies. As a result of this work we are pleased to now offer this antibody in purified format. We are in the process of updating our datasheets. The purified format is designated 'PUR' on our product labels. If you have any questions regarding this update, please contact our Scientific Support team.</p> <p>This product is a recombinant monoclonal antibody, which offers several advantages including:</p> <ul style="list-style-type: none">- High batch-to-batch consistency and reproducibility- Improved sensitivity and specificity- Long-term security of supply- Animal-free production <p>For more information see here.</p> <p>Our RabMAb[®] technology is a patented hybridoma-based technology for making rabbit monoclonal antibodies. For details on our patents, please refer to RabMAb[®] patents.</p> <p>Mouse, Rat: We have preliminary internal testing data to indicate this antibody may not react with these species. Please contact us for more information.</p>

製品の特性

製品の状態	Liquid
保存方法	Shipped at 4°C. Upon delivery aliquot and store at -20°C. Avoid freeze / thaw cycles.

バッファー	pH: 7.20 Preservative: 0.01% Sodium azide Constituents: 59% PBS, 40% Glycerol (glycerin, glycerine), 0.05% BSA
精製度	Protein A purified
ポリ/モノ	モノクローナル
クローン名	EP1496Y
アイソタイプ	IgG

アプリケーション

The Abpromise guarantee **Abpromise保証は、次のテスト済みアプリケーションにおけるab51251の使用に適用されます**
アプリケーションノートには、推奨の開始希釈率がありますが、適切な希釈率につきましてはご検討ください。

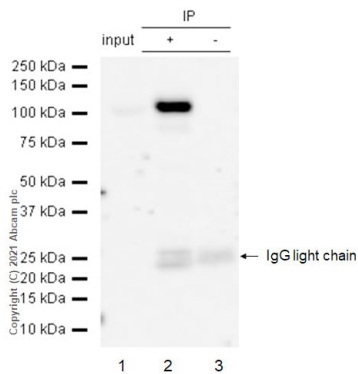
アプリケーション	Abreviews	特記事項
WB	★★★★★ (4)	1/1000. Detects a band of approximately 105 kDa (predicted molecular weight: 97 kDa).
IP		1/20.

追加情報 Is unsuitable for Flow Cyt or ICC/IF.

ターゲット情報

機能	Converts transient diacylglycerol (DAG) signals into prolonged physiological effects, downstream of PKC. Involved in resistance to oxidative stress.
組織特異性	Widely expressed.
配列類似性	Belongs to the protein kinase superfamily. CAMK Ser/Thr protein kinase family. PKD subfamily. Contains 1 PH domain. Contains 2 phorbol-ester/DAG-type zinc fingers. Contains 1 protein kinase domain.
翻訳後修飾	Phosphorylation of Ser-876 correlates with the activation status of the kinase. Ser-706 is probably phosphorylated by PKC.
細胞内局在	Cytoplasm. Membrane. Translocation to the cell membrane is required for kinase activation.

画像



Immunoprecipitation - Anti-PKD2 (phospho S876) antibody [EP1496Y] (ab51251)

Purified ab51251 at 1:20 dilution (0.6µg) immunoprecipitating PKD2 in HEK-293 (Human embryonic kidney epithelial cell) treated with 50nM Calyculin A for 3 hours whole cell lysate.

Lane 1 (input): HEK-293 (Human embryonic kidney epithelial cell) treated with 50nM Calyculin A for 3 hours whole cell lysate 10µg.

Lane 2 (+): ab51251 + HEK-293 (Human embryonic kidney epithelial cell) treated with 50nM Calyculin A for 3 hours whole cell lysate.

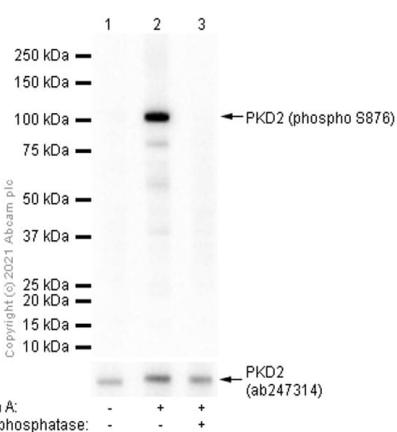
Lane 3 (-): Rabbit monoclonal IgG (**ab172730**) instead of ab51251 in HEK-293 treated with 50nM Calyculin A for 3 hours whole cell lysate.

VeriBlot for IP Detection Reagent (HRP)TM (**ab131366**) (1:1000 dilution) was used for Western blotting.

Blocking Buffer and concentration: 5% NFDm/TBST.

Diluting buffer and concentration: 5% NFDm/TBST.

Observed band size: 105 kDa



Western blot - Anti-PKD2 (phospho S876) antibody [EP1496Y] (ab51251)

All lanes : Anti-PKD2 (phospho S876) antibody [EP1496Y] (ab51251) at 1/1000 dilution (Purified)

Lane 1 : untreated HeLa (Human cervix adenocarcinoma epithelial cell) whole cell lysate

Lane 2 : HeLa (Human cervix adenocarcinoma epithelial cell) starved overnight and treated with 100nM calyculin A for 60 minutes whole cell lysate

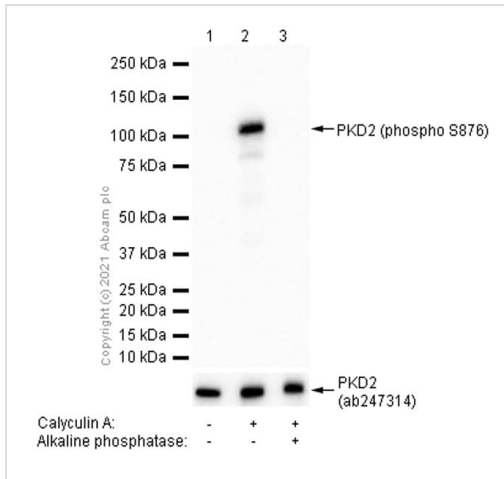
Lane 3 : HeLa (Human cervix adenocarcinoma epithelial cell) starved overnight and treated with 100nM calyculin A for 60 minutes whole cell lysate, then the membrane treated with Alkaline Phosphatase for 1 hour

Secondary

All lanes : Goat Anti-Rabbit IgG H&L (HRP) (**ab97051**) at 1/20000 dilution

Predicted band size: 97 kDa

Observed band size: 105 kDa



Western blot - Anti-PKD2 (phospho S876) antibody [EP1496Y] (ab51251)

All lanes : Anti-PKD2 (phospho S876) antibody [EP1496Y] (ab51251) at 1/1000 dilution (Purified)

Lane 1 : untreated HEK-293 (Human embryonic kidney epithelial cell) whole cell lysate

Lane 2 : HEK-293 (Human embryonic kidney epithelial cell) starved overnight and treated with 100nM calyculin A for 60 minutes, whole cell lysate

Lane 3 : HEK-293 (Human embryonic kidney epithelial cell) starved overnight and treated with 100nM calyculin A for 60 minutes whole cell lysate, then the membrane treated with Alkaline Phosphatase for 1 hour

Secondary

All lanes : Goat Anti-Rabbit IgG H&L (HRP) ([ab97051](#)) at 1/20000 dilution

Predicted band size: 97 kDa

Observed band size: 105 kDa

Why choose a recombinant antibody?

Research with confidence
Consistent and reproducible results

Long-term and scalable supply
Recombinant technology

Success from the first experiment
Confirmed specificity

Ethical standards compliant
Animal-free production

Anti-PKD2 (phospho S876) antibody [EP1496Y] (ab51251)

Please note: All products are "FOR RESEARCH USE ONLY. NOT FOR USE IN DIAGNOSTIC PROCEDURES"

Our Abpromise to you: Quality guaranteed and expert technical support

- Replacement or refund for products not performing as stated on the datasheet
- Valid for 12 months from date of delivery

- Response to your inquiry within 24 hours
- We provide support in Chinese, English, French, German, Japanese and Spanish
- Extensive multi-media technical resources to help you
- We investigate all quality concerns to ensure our products perform to the highest standards

If the product does not perform as described on this datasheet, we will offer a refund or replacement. For full details of the Abpromise, please visit <https://www.abcam.co.jp/abpromise> or contact our technical team.

Terms and conditions

- Guarantee only valid for products bought direct from Abcam or one of our authorized distributors