

Anti-PKD2 antibody [EP1495Y] ab51250

KO 評価済 リコンビナント RabMAb

★★★★★ [12 Abreviews](#) [8 References](#) [画像数 5](#)

製品の概要

製品名	Anti-PKD2 antibody [EP1495Y]
製品の詳細	Rabbit monoclonal [EP1495Y] to PKD2
由来種	Rabbit
アプリケーション	適用あり: WB, IHC-P, ICC/IF 適用なし: IP
種交差性	交差種: Mouse, Human
免疫原	Synthetic peptide. This information is proprietary to Abcam and/or its suppliers.
ポジティブ・コントロール	HeLa whole cell lysate (ab150035) or human breast carcinoma tissue. IF/ICC: HeLa cell line
特記事項	<p>This product is a recombinant monoclonal antibody, which offers several advantages including:</p> <ul style="list-style-type: none"> - High batch-to-batch consistency and reproducibility - Improved sensitivity and specificity - Long-term security of supply - Animal-free production <p>For more information see here.</p> <p>Our RabMAb[®] technology is a patented hybridoma-based technology for making rabbit monoclonal antibodies. For details on our patents, please refer to RabMAb[®] patents.</p> <p>Rat: We have preliminary internal testing data to indicate this antibody may not react with this species. Please contact us for more information.</p>

製品の特性

製品の状態	Liquid
保存方法	Shipped at 4°C. Upon delivery aliquot and store at -20°C. Avoid freeze / thaw cycles.
バッファー	pH: 7.20 Preservative: 0.01% Sodium azide Constituents: 49% PBS, 50% Glycerol (glycerin, glycerine), 0.05% BSA
精製度	Protein A purified
ポリ/モノ	モノクローナル
クローン名	EP1495Y

アイソタイプlgG

アプリケーション

The Abpromise guarantee Abpromise保証は、次のテスト済みアプリケーションにおけるab51250の使用に適用されます
アプリケーションノートには、推奨の開始希釈率がありますが、適切な希釈率につきましてはご検討ください。

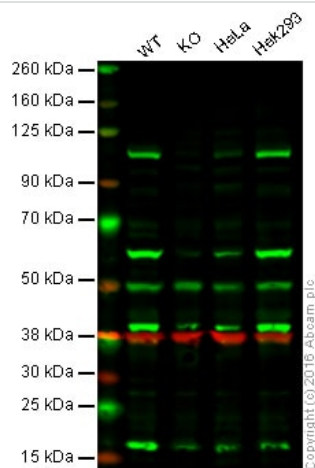
アプリケーション	Abreviews	特記事項
WB	★★★★★ (10)	1/500. Detects a band of approximately 105 kDa (predicted molecular weight: 97 kDa).
IHC-P		Use at an assay dependent concentration. Perform heat mediated antigen retrieval with citrate buffer pH 6 before commencing with IHC staining protocol.
ICC/IF	★★★★★ (2)	1/100 - 1/250.

追加情報Is unsuitable for IP.

ターゲット情報

機能	Converts transient diacylglycerol (DAG) signals into prolonged physiological effects, downstream of PKC. Involved in resistance to oxidative stress.
組織特異性	Widely expressed.
配列類似性	Belongs to the protein kinase superfamily. CAMK Ser/Thr protein kinase family. PKD subfamily. Contains 1 PH domain. Contains 2 phorbol-ester/DAG-type zinc fingers. Contains 1 protein kinase domain.
翻訳後修飾	Phosphorylation of Ser-876 correlates with the activation status of the kinase. Ser-706 is probably phosphorylated by PKC.
細胞内局在	Cytoplasm. Membrane. Translocation to the cell membrane is required for kinase activation.

画像



Western blot - Anti-PKD2 antibody [EP1495Y]
(ab51250)

Lane 1: Wild-type HAP1 cell lysate (40 µg)

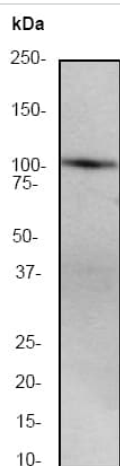
Lane 2: PKD2 knockout HAP1 cell lysate (40 µg)

Lane 3: HeLa cell lysate (20 µg)

Lane 4: HEK293 cell lysate (20 µg)

Lanes 1 - 4: Merged signal (red and green). Green - ab51250 observed at 110 kDa. Red - loading control, **ab8245**, observed at 37 kDa.

ab51250 was shown to recognize PKD2 when PKD2 knockout samples were used, along with additional cross-reactive bands. Wild-type and PKD2 knockout samples were subjected to SDS-PAGE. Ab51250 and **ab8245** (loading control to GAPDH) were diluted at 1/500 and 1:10,000 dilution respectively and incubated overnight at 4°C. Blots were developed with Goat anti-Rabbit IgG H&L (IRDye® 800CW) preadsorbed (**ab216773**) and Goat anti-Mouse IgG H&L (IRDye® 680RD) preadsorbed (**ab216776**) secondary antibodies at 1:10,000 dilution for 1 hour at room temperature before imaging.



Western blot - Anti-PKD2 antibody [EP1495Y]
(ab51250)

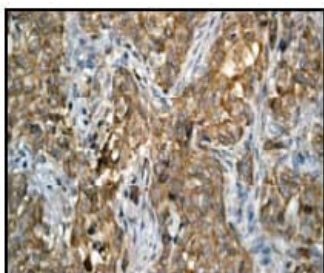
Anti-PKD2 antibody [EP1495Y] (ab51250) at 1/500 dilution + HeLa cell lysate at 10 µg

Secondary

Goat anti-rabbit HRP labeled at 1/2000 dilution

Predicted band size: 97 kDa

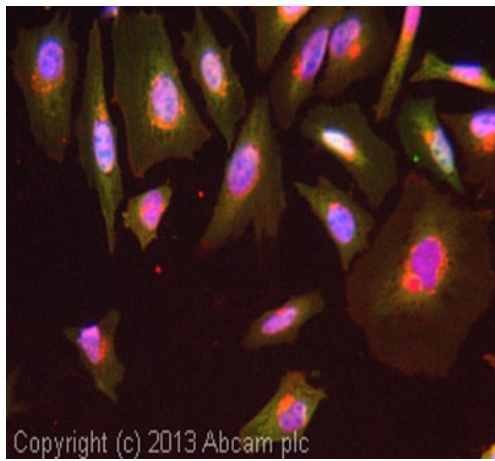
Observed band size: 105 kDa



Immunohistochemistry (Formalin/PFA-fixed paraffin-embedded sections) - Anti-PKD2 antibody
[EP1495Y] (ab51250)

Ab51250 (1:100) staining human PKD2 in human breast carcinoma tissue by immunohistochemistry using paraffin embedded tissue.

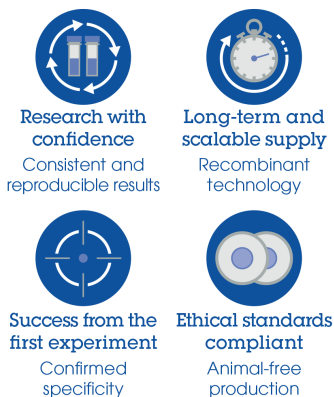
Perform heat mediated antigen retrieval with citrate buffer pH 6 before commencing with IHC staining protocol.



Immunocytochemistry/ Immunofluorescence - Anti-PKD2 antibody [EP1495Y] (ab51250)

ICC/IF image of ab51250 stained HeLa cells. The cells were 4% Formaldehyde fixed (10 mins) and then incubated in 1%BSA / 10% normal goat serum / 0.3M glycine in 0.1% PBS-Tween for 1h to permeabilise the cells and block non-specific protein-protein interactions. The cells were then incubated with the antibody (ab51250, 10µg/ml) overnight at +4°C. The secondary antibody (green) was **ab96899**, DyLight® 488 goat anti-rabbit IgG (H+L) used at a 1/250 dilution for 1h. Alexa Fluor® 594 WGA was used to label plasma membranes (red) at a 1/200 dilution for 1h. DAPI was used to stain the cell nuclei (blue) at a concentration of 1.43µM.

Why choose a recombinant antibody?



Anti-PKD2 antibody [EP1495Y] (ab51250)

Please note: All products are "FOR RESEARCH USE ONLY. NOT FOR USE IN DIAGNOSTIC PROCEDURES"

Our Abpromise to you: Quality guaranteed and expert technical support

- Replacement or refund for products not performing as stated on the datasheet
- Valid for 12 months from date of delivery
- Response to your inquiry within 24 hours
- We provide support in Chinese, English, French, German, Japanese and Spanish
- Extensive multi-media technical resources to help you
- We investigate all quality concerns to ensure our products perform to the highest standards

If the product does not perform as described on this datasheet, we will offer a refund or replacement. For full details of the Abpromise, please visit <https://www.abcam.co.jp/abpromise> or contact our technical team.

Terms and conditions

- Guarantee only valid for products bought direct from Abcam or one of our authorized distributors