

Anti-PKC zeta (phospho T560) antibody [EP2037AY] ab62372

リコンビナント **RabMAb**

22 References 画像数 7

製品の概要

製品名	Anti-PKC zeta (phospho T560) antibody [EP2037AY]
製品の詳細	Rabbit monoclonal [EP2037AY] to PKC zeta (phospho T560)
由来種	Rabbit
アプリケーション	適用あり: WB, IHC-P, Dot blot 適用なし: Flow Cyt or ICC/IF
種交差性	交差種: Mouse, Rat, Human
免疫原	Synthetic peptide within Human PKC zeta aa 550-650 (phospho T560). The exact sequence is proprietary.
ポジティブ・コントロール	WB: HeLa cell lysates. IHC-P: Human brain tissue and human breast ductal carcinoma tissue.
特記事項	This product is a recombinant monoclonal antibody, which offers several advantages including: <ul style="list-style-type: none"> - High batch-to-batch consistency and reproducibility - Improved sensitivity and specificity - Long-term security of supply - Animal-free production For more information see here . Our RabMAb [®] technology is a patented hybridoma-based technology for making rabbit monoclonal antibodies. For details on our patents, please refer to RabMAb[®] patents .

製品の特性

製品の状態	Liquid
保存方法	Shipped at 4°C. Store at -20°C. Stable for 12 months at -20°C.
バッファー	pH: 7.20 Preservative: 0.01% Sodium azide Constituents: 49% PBS, 50% Glycerol (glycerin, glycerine), 0.05% BSA
精製度	Protein A purified
ポリ/モノ	モノクローナル
クローン名	EP2037AY
アイソタイプ	IgG

アプリケーション

The Abpromise guarantee Abpromise保証は、次のテスト済みアプリケーションにおけるab62372の使用に適用されます
アプリケーションノートには、推奨の開始希釈率がありますが、適切な希釈率につきましてはご検討ください。

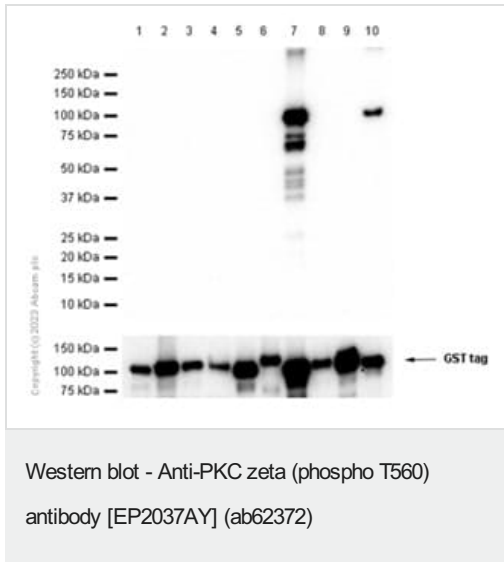
アプリケーション	Abreviews	特記事項
WB		1/1000 - 1/10000. Detects a band of approximately 70 kDa (predicted molecular weight: 68 kDa).
IHC-P		1/100. Perform heat mediated antigen retrieval with Tris/EDTA buffer pH 9.0 before commencing with IHC staining protocol.
Dot blot		1/1000.

追加情報 Is unsuitable for Flow Cyt or ICC/IF.

ターゲット情報

機能	This is a calcium-independent, phospholipid-dependent, serine- and threonine-specific enzyme. Phosphorylates 'Ser-311' of RELA subunit of NF-kappa-B. PKC is activated by diacylglycerol which in turn phosphorylates a range of cellular proteins. PKC also serves as the receptor for phorbol esters, a class of tumor promoters. Subunit of a quaternary complex that plays a central role in epithelial cell polarization.
組織特異性	Expressed in brain, and to a lesser extent in lung, kidney and testis.
配列類似性	Belongs to the protein kinase superfamily. AGC Ser/Thr protein kinase family. PKC subfamily. Contains 1 AGC-kinase C-terminal domain. Contains 1 OPR domain. Contains 1 phorbol-ester/DAG-type zinc finger. Contains 1 protein kinase domain.
ドメイン	The OPR domain mediates mutually exclusive interactions with SQSTM1 and PARD6B. The C1 domain does not bind the diacylglycerol (DAG).
翻訳後修飾	CDH5 is required for its phosphorylation at Thr-410.
細胞内局在	Cytoplasm. Endosome. Cell junction. In the retina, localizes in the terminals of the rod bipolar cells (By similarity). Associates with endosomes. Presence of KRIT1, CDH5 and RAP1B is required for its localization to the cell junction.

画像



All lanes : Anti-PKC zeta (phospho T560) antibody [EP2037AY] (ab62372) at 1/1000 dilution

Lane 1 : Recombinant human PKC alpha protein (Active) ([ab55672](#))

Lane 2 : Recombinant human PKC beta 1 protein ([ab60840](#))

Lane 3 : Recombinant human PKC beta 2 protein ([ab60841](#))

Lane 4 : Recombinant human PKC gamma protein ([ab60842](#))

Lane 5 : Recombinant human PKC delta protein ([ab60844](#))

Lane 6 : Recombinant human PKC epsilon protein ([ab60847](#))

Lane 7 : Recombinant human PKC zeta protein ([ab60848](#))

Lane 8 : Recombinant human PKC eta protein ([ab60849](#))

Lane 9 : Recombinant human PKC theta/PRKCQ protein ([ab56641](#))

Lane 10 : Recombinant human PKC iota protein ([ab60850](#))

Secondary

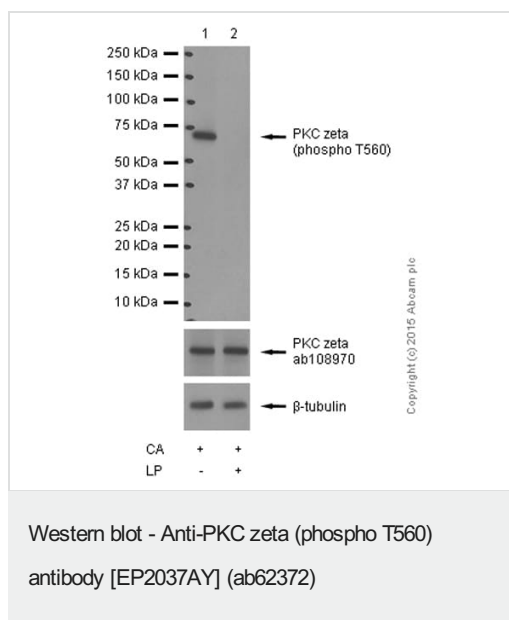
All lanes : Goat Anti-Rabbit IgG H&L (HRP) ([ab97051](#)) at 1/20000 dilution

Predicted band size: 68 kDa

Observed band size: 105 kDa

Exposure time: 5 seconds

Blocking and diluting buffer and concentration: 5% NFDM/TBST.



All lanes : Anti-PKC zeta (phospho T560) antibody [EP2037AY] (ab62372) at 1/20000 dilution

Lane 1 : HeLa cell lysate - treated with Calyculin A

Lane 2 : HeLa cell lysate - treated with Calyculin A and lambda phosphatase

Lysates/proteins at 10 µg per lane.

Secondary

All lanes : Goat Anti-Rabbit IgG H&L (HRP) (**ab97051**) at 1/20000 dilution

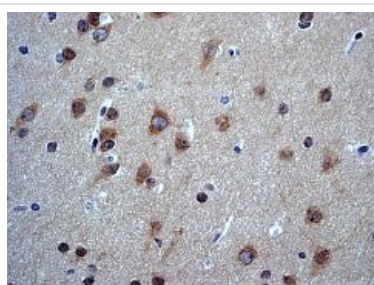
Predicted band size: 68 kDa

Exposure time: 3 minutes

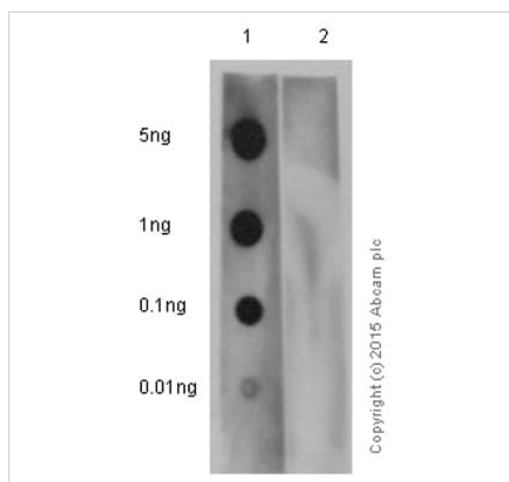
Blocking and dilution buffer: 5% NFDM/TBST.

ab62372 at 1/100 dilution staining PKC zeta in human brain by Immunohistochemistry, Paraffin-embedded tissue.

Perform heat mediated antigen retrieval with EDTA buffer pH 9 before commencing with IHC staining protocol.



Immunohistochemistry (Formalin/PFA-fixed paraffin-embedded sections) - Anti-PKC zeta (phospho T560) antibody [EP2037AY] (ab62372)

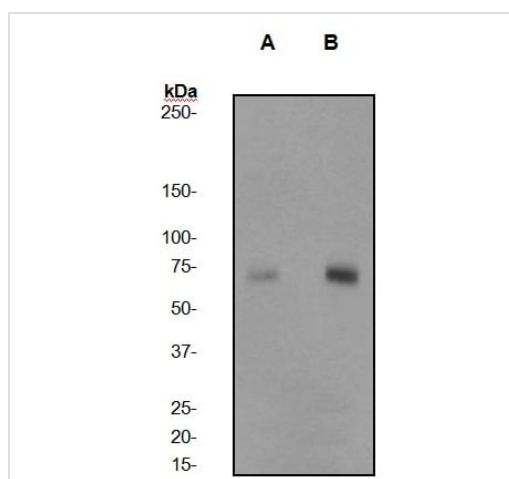


Dot Blot - Anti-PKC zeta (phospho T560) antibody [EP2037AY] (ab62372)

Dot blot analysis of PKC zeta (pT560) peptide (Lane 1) and PKC zeta non-phospho peptide (Lane 2) labelling PKC zeta (pT560) with ab62372 at a dilution of 1/1000. **ab97051** (Peroxidase conjugated goat anti-rabbit IgG (H+L)) was used as the secondary antibody at a dilution of 1/100000.

Blocking and dilution buffer: 5% NFDM/TBST.

Exposure time: 3 minutes.



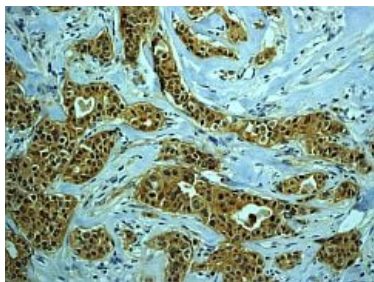
Western blot - Anti-PKC zeta (phospho T560) antibody [EP2037AY] (ab62372)

All lanes : Anti-PKC zeta (phospho T560) antibody [EP2037AY] (ab62372)

Lane 1 : HeLa Cell Lysate (untreated with Calyculin A)

Lane 2 : HeLa Cell Lysate (Treated with Calyculin A)

Predicted band size: 68 kDa



ab62372 at 1/100 dilution staining PKC zeta in human breast ductal carcinoma by Immunohistochemistry, Paraffin-embedded tissue.

Perform heat mediated antigen retrieval with EDTA buffer pH 9 before commencing with IHC staining protocol.

Immunohistochemistry (Formalin/PFA-fixed paraffin-embedded sections) - Anti-PKC zeta (phospho T560) antibody [EP2037AY] (ab62372)

Why choose a recombinant antibody?



Research with confidence
Consistent and reproducible results



Long-term and scalable supply
Recombinant technology



Success from the first experiment
Confirmed specificity



Ethical standards compliant
Animal-free production

Anti-PKC zeta (phospho T560) antibody
[EP2037AY] (ab62372)

Please note: All products are "FOR RESEARCH USE ONLY. NOT FOR USE IN DIAGNOSTIC PROCEDURES"

Our Abpromise to you: Quality guaranteed and expert technical support

- Replacement or refund for products not performing as stated on the datasheet
- Valid for 12 months from date of delivery
- Response to your inquiry within 24 hours
- We provide support in Chinese, English, French, German, Japanese and Spanish
- Extensive multi-media technical resources to help you
- We investigate all quality concerns to ensure our products perform to the highest standards

If the product does not perform as described on this datasheet, we will offer a refund or replacement. For full details of the Abpromise, please visit <https://www.abcam.co.jp/abpromise> or contact our technical team.

Terms and conditions

- Guarantee only valid for products bought direct from Abcam or one of our authorized distributors