

Anti-PKC zeta (phospho T560) antibody ab59412

12 References **画像数 5**

製品の概要

製品名	Anti-PKC zeta (phospho T560) antibody
製品の詳細	Rabbit polyclonal to PKC zeta (phospho T560)
由来種	Rabbit
特異性	Detects endogenous levels of PKC? only when phosphorylated at threonine 560.
アプリケーション	適用あり: WB, ELISA, IHC-P
種交差性	交差種: Human, African green monkey
免疫原	Synthetic peptide corresponding to Human PKC zeta aa 500-600 (phospho T560). Database link: Q05513
ポジティブ・コントロール	WB: Extracts from COS7 cells treated with PMA (125ng/ml, 30mins). IHC-P: Human brain gliomas, human brain tissue.
特記事項	<p>The Life Science industry has been in the grips of a reproducibility crisis for a number of years. Abcam is leading the way in addressing this with our range of recombinant monoclonal antibodies and knockout edited cell lines for gold-standard validation. Please check that this product meets your needs before purchasing.</p> <p>If you have any questions, special requirements or concerns, please send us an inquiry and/or contact our Support team ahead of purchase. Recommended alternatives for this product can be found below, along with publications, customer reviews and Q&As</p>

製品の特性

製品の状態	Liquid
保存方法	Shipped at 4°C. Store at +4°C short term (1-2 weeks). Upon delivery aliquot. Store at -20°C long term. Avoid freeze / thaw cycle.
バッファー	pH: 7.40 Preservative: 0.02% Sodium azide Constituents: PBS, 50% Glycerol (glycerin, glycerine), 0.87% Sodium chloride
精製度	Immunogen affinity purified
特記事項 (精製)	Affinity-purified from rabbit antiserum by affinity chromatography using epitope-specific phosphopeptide. The antibody against non-phosphopeptide was removed by chromatography using non-phosphopeptide corresponding to the phosphorylation site.
ポリ/モノ	ポリクローナル

アプリケーション

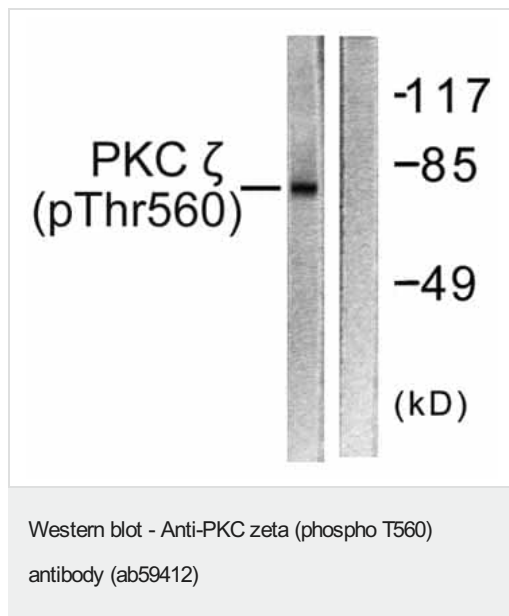
The Abpromise guarantee **Abpromise保証は、次のテスト済みアプリケーションにおけるab59412の使用に適用されます**
アプリケーションノートには、推奨の開始希釈率がありますが、適切な希釈率につきましてはご検討ください。

アプリケーション	Abreviews	特記事項
WB		1/500 - 1/1000. Detects a band of approximately 68 kDa (predicted molecular weight: 68 kDa).
ELISA		1/20000.
IHC-P		1/50 - 1/100.

ターゲット情報

機能	This is a calcium-independent, phospholipid-dependent, serine- and threonine-specific enzyme. Phosphorylates 'Ser-311' of RELA subunit of NF-kappa-B. PKC is activated by diacylglycerol which in turn phosphorylates a range of cellular proteins. PKC also serves as the receptor for phorbol esters, a class of tumor promoters. Subunit of a quaternary complex that plays a central role in epithelial cell polarization.
組織特異性	Expressed in brain, and to a lesser extent in lung, kidney and testis.
配列類似性	Belongs to the protein kinase superfamily. AGC Ser/Thr protein kinase family. PKC subfamily. Contains 1 AGC-kinase C-terminal domain. Contains 1 OPR domain. Contains 1 phorbol-ester/DAG-type zinc finger. Contains 1 protein kinase domain.
ドメイン	The OPR domain mediates mutually exclusive interactions with SQSTM1 and PARD6B. The C1 domain does not bind the diacylglycerol (DAG).
翻訳後修飾	CDH5 is required for its phosphorylation at Thr-410.
細胞内局在	Cytoplasm. Endosome. Cell junction. In the retina, localizes in the terminals of the rod bipolar cells (By similarity). Associates with endosomes. Presence of KRIT1, CDH5 and RAP1B is required for its localization to the cell junction.

画像



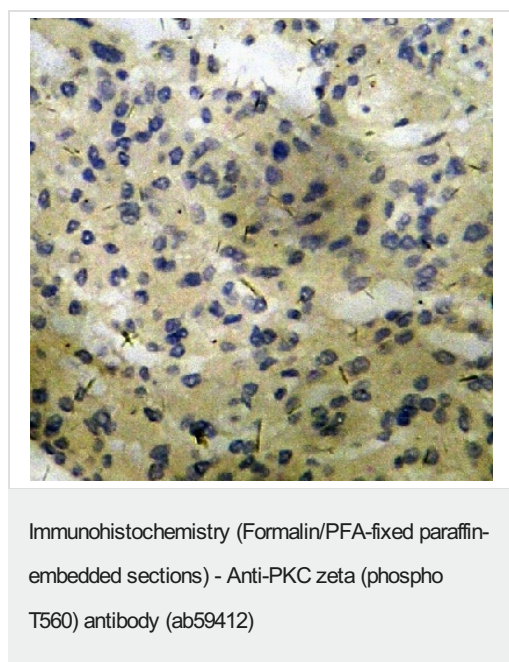
All lanes : Anti-PKC zeta (phospho T560) antibody (ab59412) at 1/500 dilution

Lane 1 : Extracts from COS7 cells treated with PMA (125ng/ml, 30mins)

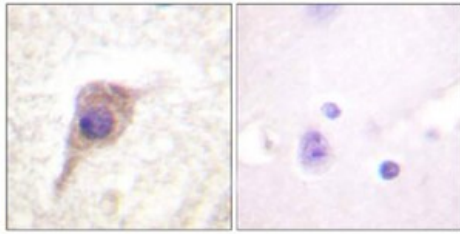
Lane 2 : Extracts from COS7 cells treated with PMA (125ng/ml, 30mins) with phosphopeptide

Predicted band size: 68 kDa

Observed band size: 68 kDa

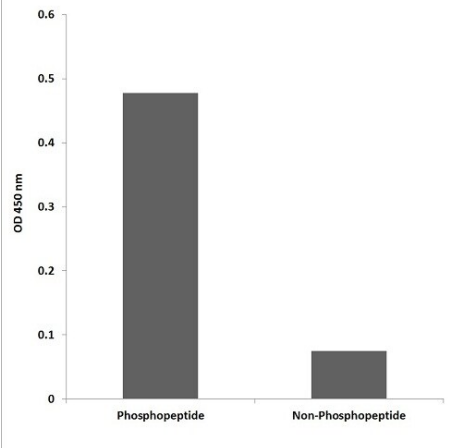


Immunohistochemical analysis of paraffin embedded human brain gliomas using ab59412 at 1/50 dilution



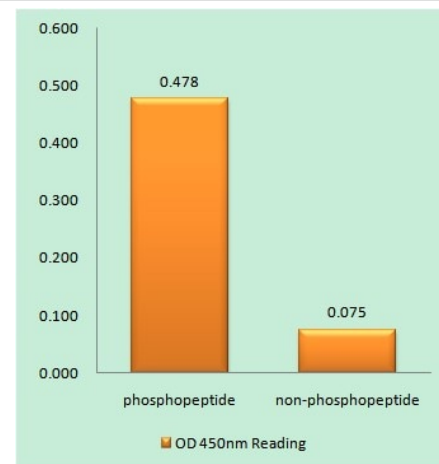
Immunohistochemical analysis of paraffin embedded human brain tissue using ab59412 at 1/50 dilution, in the presence (right) and absence (left) of immunising phosphopeptide.

Immunohistochemistry (Formalin/PFA-fixed paraffin-embedded sections) - Anti-PKC zeta (phospho T560) antibody (ab59412)



ELISA showing that ab59412 (1:20000) detects endogenous levels of PKC zeta only when phosphorylated at Thr560.

ELISA - Anti-PKC zeta (phospho T560) antibody (ab59412)



Enzyme-Linked Immunosorbent Assay (Phospho-ELISA) for Immunogen Phosphopeptide (Phospho-left) and Non-Phosphopeptide (Phospho-right), using PKC zeta (Phospho-Thr560) Antibody, ab59412.

ELISA - Anti-PKC zeta (phospho T560) antibody (ab59412)

Please note: All products are "FOR RESEARCH USE ONLY. NOT FOR USE IN DIAGNOSTIC PROCEDURES"

Our Abpromise to you: Quality guaranteed and expert technical support

- Replacement or refund for products not performing as stated on the datasheet
- Valid for 12 months from date of delivery
- Response to your inquiry within 24 hours

- We provide support in Chinese, English, French, German, Japanese and Spanish
- Extensive multi-media technical resources to help you
- We investigate all quality concerns to ensure our products perform to the highest standards

If the product does not perform as described on this datasheet, we will offer a refund or replacement. For full details of the Abpromise, please visit <https://www.abcam.co.jp/abpromise> or contact our technical team.

Terms and conditions

- Guarantee only valid for products bought direct from Abcam or one of our authorized distributors