

# Anti-PKC zeta (phospho T410) + PKC iota (phospho T412) antibody [EP1491Y] ab76129

リコンビナント **RabMAb**

**4 References**   [画像数 9](#)

### 製品の概要

製品名	Anti-PKC zeta (phospho T410) + PKC iota (phospho T412) antibody [EP1491Y]
製品の詳細	Rabbit monoclonal [EP1491Y] to PKC zeta (phospho T410) + PKC iota (phospho T412)
由来種	Rabbit
特異性	This antibody detects PKC zeta and PKC lamda phosphorylated at T410/412 respectively. This antibody also detects various PKC phosphorylated isoforms.
アプリケーション	<b>適用あり:</b> IHC-P, WB <b>適用なし:</b> IP
種交差性	<b>交差種:</b> Mouse, Rat, Human
免疫原	Synthetic peptide. This information is proprietary to Abcam and/or its suppliers.
ポジティブ・コントロール	293 cell lysate, human brain tissue; HeLa cells.
特記事項	This product is a recombinant monoclonal antibody, which offers several advantages including: - High batch-to-batch consistency and reproducibility - Improved sensitivity and specificity - Long-term security of supply - Animal-free production For more information <a href="#">see here</a> .  Our RabMAb <sup>®</sup> technology is a patented hybridoma-based technology for making rabbit monoclonal antibodies. For details on our patents, please refer to <a href="#">RabMAb<sup>®</sup> patents</a> .

### 製品の特性

製品の状態	Liquid
保存方法	Shipped at 4°C. Store at +4°C short term (1-2 weeks). Upon delivery aliquot. Store at -20°C. Avoid freeze / thaw cycle.
バッファー	pH: 7.20 Preservative: 0.01% Sodium azide Constituents: 59% PBS, 40% Glycerol (glycerin, glycerine), 0.05% BSA
精製度	Protein A purified

ポリ/モノ	モノクローナル
クローン名	EP1491Y
アイソタイプ	IgG

アプリケーション

**The Abpromise guarantee**      Abpromise保証は、次のテスト済みアプリケーションにおけるab76129の使用に適用されます  
 アプリケーションノートには、推奨の開始希釈率がありますが、適切な希釈率につきましてはご確認ください。

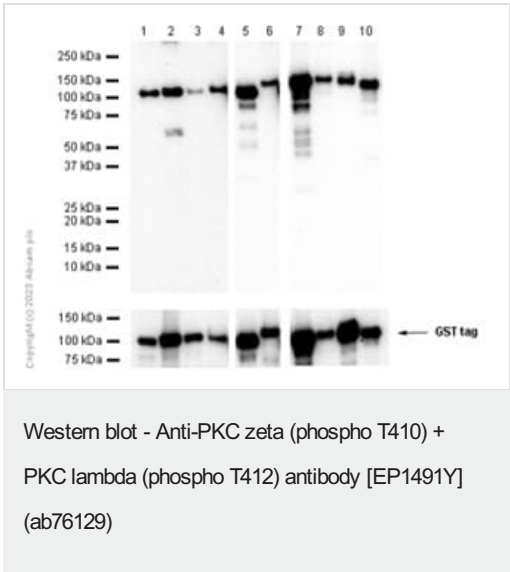
アプリケーション	Abreviews	特記事項
IHC-P		1/50 - 1/100. Perform heat mediated antigen retrieval before commencing with IHC staining protocol. See <a href="#">IHC antigen retrieval protocols</a> .
WB		1/20000. Predicted molecular weight: 68 kDa. <b>For unpurified, use 1/1000 - 1/2000.</b>

**追加情報**      Is unsuitable for IP.

ターゲット情報

**細胞内局在**      PKC zeta: Cytoplasm. Endosome. Cell junction. In the retina, localizes in the terminals of the rod bipolar cells (By similarity). Associates with endosomes. Presence of KRIT1, CDH5 and RAP1B is required for its localization to the cell junction. PKC iota: Cytoplasm. Membrane. Endosome. Nucleus. Transported into the endosome through interaction with SQSTM1/p62. After phosphorylation by cSrc, transported into the nucleus through interaction with KPNB1. Colocalizes with CDK7 in the cytoplasm and nucleus. Vesicular tubular clusters. Transported to VTCs through interaction with RAB2A.

画像



**All lanes :** Anti-PKC zeta (phospho T410) + PKC iota (phospho T412) antibody [EP1491Y] (ab76129) at 1/1000 dilution

- Lane 1 :** Recombinant human PKC alpha protein (Active) ([ab55672](#))
- Lane 2 :** Recombinant human PKC beta 1 protein ([ab60840](#))
- Lane 3 :** Recombinant human PKC beta 2 protein ([ab60841](#))
- Lane 4 :** Recombinant human PKC gamma protein ([ab60842](#))
- Lane 5 :** Recombinant human PKC delta protein ([ab60844](#))
- Lane 6 :** Recombinant human PKC epsilon protein ([ab60847](#))
- Lane 7 :** Recombinant human PKC zeta protein ([ab60848](#))
- Lane 8 :** Recombinant human PKC eta protein ([ab60849](#))
- Lane 9 :** Recombinant human PKC theta/PRKCQ protein

([ab56641](#))

**Lane 10** : Recombinant human PKC iota protein ([ab60850](#))

### Secondary

**All lanes** : Goat Anti-Rabbit IgG H&L (HRP) ([ab97051](#)) at 1/20000 dilution

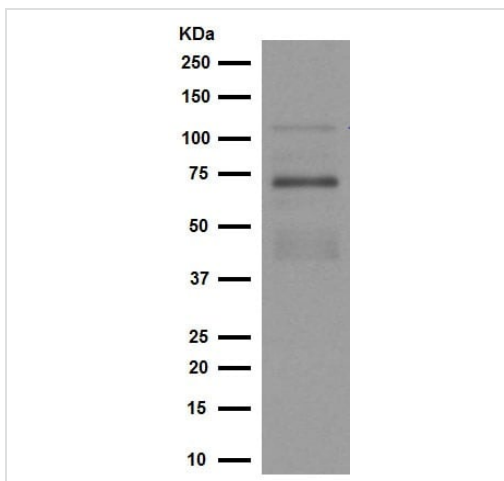
**Predicted band size:** 68 kDa

**Observed band size:** 105 kDa

Blocking and diluting buffer and concentration: 5% NFDM/TBST.

Exposure time: Lane 1-4: 180 seconds; Lane 5-6: 60 seconds;

Lane 7-10: 5 seconds.



Western blot - Anti-PKC zeta (phospho T410) +  
PKC lambda (phospho T412) antibody [EP1491Y]  
([ab76129](#))

Anti-PKC zeta (phospho T410) + PKC iota (phospho T412)  
antibody [EP1491Y] ([ab76129](#)) at 1/20000 dilution (purified) +  
Mouse lung tissue lysate at 10 µg

### Secondary

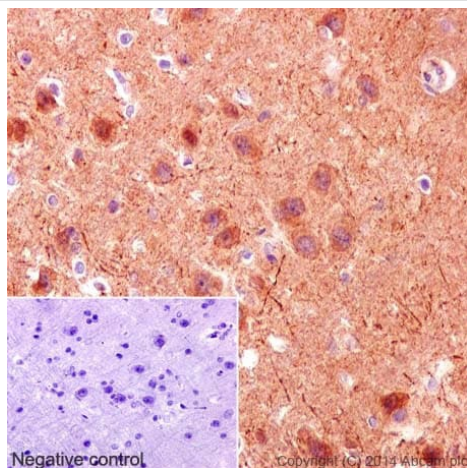
HRP goat anti-rabbit (H+L) at 1/1000 dilution

**Predicted band size:** 68 kDa

**Observed band size:** 74 kDa

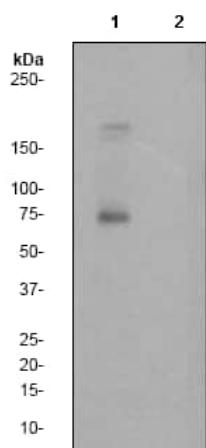
Blocking buffer: 5% NFDM/TBST

Dilution buffer: 5% NFDM/TBST



Immunohistochemistry (Formalin/PFA-fixed paraffin-embedded sections) - Anti-PKC zeta (phospho T410) + PKC lambda (phospho T412) antibody [EP1491Y] (ab76129)

Immunohistochemical staining of paraffin embedded rat cerebral cortex with purified ab76129 at a working dilution of 1 in 100. The secondary antibody used is a HRP goat anti-rabbit IgG ([ab97051](#)), used at a dilution of 1/500. The sample is counter-stained with hematoxylin. Antigen retrieval was performed using Tris-EDTA buffer, pH 9.0. PBS was used instead of the primary antibody as the negative control, and is shown in the inset.



Western blot - Anti-PKC zeta (phospho T410) + PKC lambda (phospho T412) antibody [EP1491Y] (ab76129)

**All lanes :** Anti-PKC zeta (phospho T410) + PKC iota (phospho T412) antibody [EP1491Y] (ab76129) at 1/2000 dilution (unpurified)

**Lane 1 :** 293 cell lysates, untreated

**Lane 2 :** 293 cell lysates, treated with AP

Lysates/proteins at 10 µg per lane.

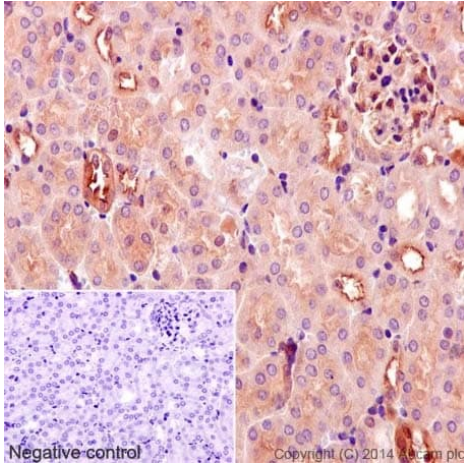
### Secondary

**All lanes :** goat anti-rabbit-HRP at 1/1000 dilution

**Predicted band size:** 68 kDa

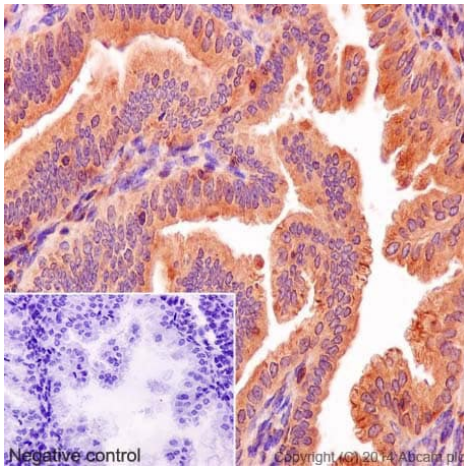
**Observed band size:** 68 kDa

**Additional bands at:** 165 kDa, 170 kDa. We are unsure as to the identity of these extra bands.



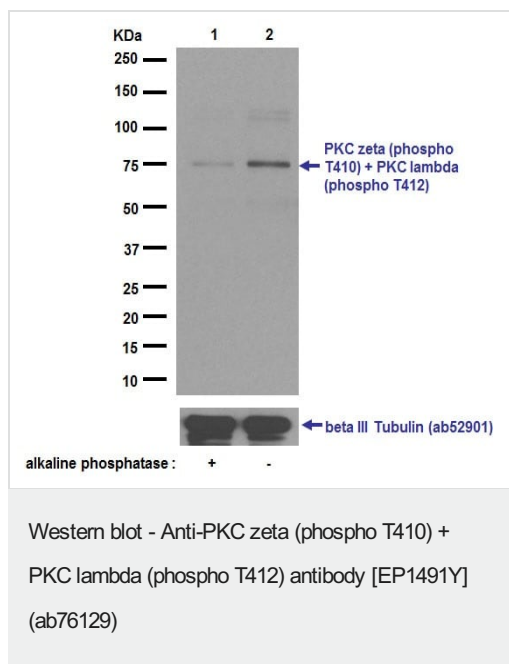
Immunohistochemical staining of paraffin embedded mouse kidney with purified ab76129 at a working dilution of 1 in 100. The secondary antibody used is a HRP goat anti-rabbit IgG ([ab97051](#)), used at a dilution of 1/500. The sample is counter-stained with hematoxylin. Antigen retrieval was performed using Tris-EDTA buffer, pH 9.0. PBS was used instead of the primary antibody as the negative control, and is shown in the inset.

Immunohistochemistry (Formalin/PFA-fixed paraffin-embedded sections) - Anti-PKC zeta (phospho T410) + PKC lambda (phospho T412) antibody [EP1491Y] (ab76129)



Immunohistochemical staining of paraffin embedded human endometrium with purified ab76129 at a working dilution of 1 in 100. The secondary antibody used is a HRP goat anti-rabbit IgG ([ab97051](#)), used at a dilution of 1/500. The sample is counter-stained with hematoxylin. Antigen retrieval was performed using Tris-EDTA buffer, pH 9.0. PBS was used instead of the primary antibody as the negative control, and is shown in the inset.

Immunohistochemistry (Formalin/PFA-fixed paraffin-embedded sections) - Anti-PKC zeta (phospho T410) + PKC lambda (phospho T412) antibody [EP1491Y] (ab76129)



**All lanes :** Anti-PKC zeta (phospho T410) + PKC lambda (phospho T412) antibody [EP1491Y] (ab76129) at 1/20000 dilution (purified)

**Lane 1 :** Untreated HeLa cell lysate

**Lane 2 :** HeLa cell lysate treated with alkaline phosphatase

Lysates/proteins at 10 µg per lane.

## Secondary

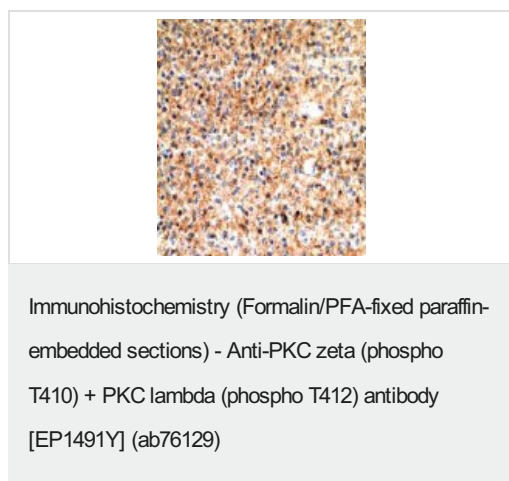
**All lanes :** HRP goat anti-rabbit (H+L) at 1/1000 dilution

**Predicted band size:** 68 kDa

**Additional bands at:** 74 kDa. We are unsure as to the identity of these extra bands.

Blocking buffer: 5% NFDM/TBST

Dilution buffer: 5% NFDM/TBST



Immunohistochemical staining of PKC zeta in human brain with unpurified ab76129 at 1/100 dilution.

Perform heat mediated antigen retrieval before commencing with IHC staining protocol.

### Why choose a recombinant antibody?



**Research with confidence**  
Consistent and reproducible results



**Long-term and scalable supply**  
Recombinant technology



**Success from the first experiment**  
Confirmed specificity



**Ethical standards compliant**  
Animal-free production

Anti-PKC zeta (phospho T410) + PKC lambda (phospho T412) antibody [EP1491Y] (ab76129)

**Please note:** All products are "FOR RESEARCH USE ONLY. NOT FOR USE IN DIAGNOSTIC PROCEDURES"

### Our Abpromise to you: Quality guaranteed and expert technical support

---

- Replacement or refund for products not performing as stated on the datasheet
- Valid for 12 months from date of delivery
- Response to your inquiry within 24 hours
- We provide support in Chinese, English, French, German, Japanese and Spanish
- Extensive multi-media technical resources to help you
- We investigate all quality concerns to ensure our products perform to the highest standards

If the product does not perform as described on this datasheet, we will offer a refund or replacement. For full details of the Abpromise, please visit <https://www.abcam.co.jp/abpromise> or contact our technical team.

### Terms and conditions

---

- Guarantee only valid for products bought direct from Abcam or one of our authorized distributors