

Anti-PKC zeta antibody [EP1490(2)] ab108970

KO 評価済 RabMAb

1 Abreviews 1 References 画像数 3

製品の概要

| | |
|--------------|---|
| 製品名 | Anti-PKC zeta antibody [EP1490(2)] |
| 製品の詳細 | Rabbit monoclonal [EP1490(2)] to PKC zeta |
| 由来種 | Rabbit |
| アプリケーション | 適用あり: WB 適用なし: Flow Cyt, ICC/IF, IHC-P or IP |
| 種交差性 | 交差種: Mouse, Rat, Human |
| 免疫原 | Synthetic peptide. This information is proprietary to Abcam and/or its suppliers. |
| ポジティブ・コントロール | 293T, HT-29 and fetal liver lysates |
| 特記事項 | Our RabMAb [®] technology is a patented hybridoma-based technology for making rabbit monoclonal antibodies. For details on our patents, please refer to RabMAb[®] patents . The Life Science industry has been in the grips of a reproducibility crisis for a number of years. Abcam is leading the way in addressing this with our range of recombinant monoclonal antibodies and knockout edited cell lines for gold-standard validation. Please check that this product meets your needs before purchasing. If you have any questions, special requirements or concerns, please send us an inquiry and/or contact our Support team ahead of purchase. Recommended alternatives for this product can be found below, along with publications, customer reviews and Q&As |

製品の特性

| | |
|-------|---|
| 製品の状態 | Liquid |
| 保存方法 | Shipped at 4°C. Store at -20°C. Stable for 12 months at -20°C. |
| バッファー | pH: 7.20 Preservative: 0.01% Sodium azide Constituents: 9% PBS, 40% Glycerol (glycerin, glycerine), 0.05% BSA, 50% Tissue culture supernatant |
| 精製度 | Protein A purified |
| ポリ/モノ | モノクローナル |
| クローン名 | EP1490(2) |

アイソタイプlgG

アプリケーション

The Abpromise guarantee Abpromise保証は、 次のテスト済みアプリケーションにおけるab108970の使用に適用されます
アプリケーションノートには、推奨の開始希釈率がありますが、適切な希釈率につきましてはご検討ください。

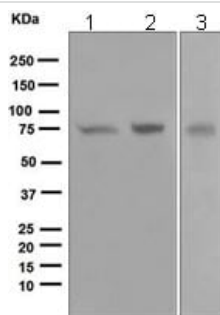
| アプリケーション | Abreviews | 特記事項 |
|----------|-----------|---|
| WB | | 1/1000 - 1/10000. Predicted molecular weight: 74 kDa. |

追加情報 Is unsuitable for Flow Cyt,ICC/IF,IHC-P or IP.

ターゲット情報

| | |
|-------|--|
| 機能 | <p>This is a calcium-independent, phospholipid-dependent, serine- and threonine-specific enzyme. Phosphorylates 'Ser-311' of RELA subunit of NF-kappa-B.</p> <p>PKC is activated by diacylglycerol which in turn phosphorylates a range of cellular proteins. PKC also serves as the receptor for phorbol esters, a class of tumor promoters. Subunit of a quaternary complex that plays a central role in epithelial cell polarization.</p> |
| 組織特異性 | Expressed in brain, and to a lesser extent in lung, kidney and testis. |
| 配列類似性 | <p>Belongs to the protein kinase superfamily. AGC Ser/Thr protein kinase family. PKC subfamily.</p> <p>Contains 1 AGC-kinase C-terminal domain.</p> <p>Contains 1 OPR domain.</p> <p>Contains 1 phorbol-ester/DAG-type zinc finger.</p> <p>Contains 1 protein kinase domain.</p> |
| ドメイン | <p>The OPR domain mediates mutually exclusive interactions with SQSTM1 and PARD6B.</p> <p>The C1 domain does not bind the diacylglycerol (DAG).</p> |
| 翻訳後修飾 | CDH5 is required for its phosphorylation at Thr-410. |
| 細胞内局在 | Cytoplasm. Endosome. Cell junction. In the retina, localizes in the terminals of the rod bipolar cells (By similarity). Associates with endosomes. Presence of KRIT1, CDH5 and RAP1B is required for its localization to the cell junction. |

画像



Western blot - Anti-PKC zeta antibody [EP1490(2)]
(ab108970)

All lanes : Anti-PKC zeta antibody [EP1490(2)] (ab108970) at
1/1000 dilution

Lane 1 : 293T lysate

Lane 2 : HT-29 lysate

Lane 3 : Fetal liver lysate

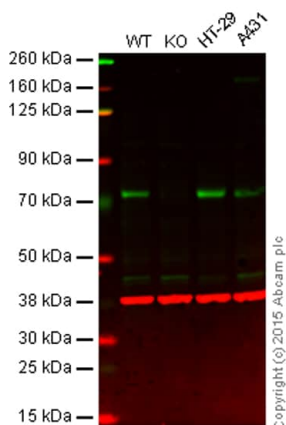
Lysates/proteins at 10 µg per lane.

Secondary

All lanes : HRP labelled goat anti-rabbit at 1/2000 dilution

Predicted band size: 74 kDa

Observed band size: 74 kDa



Western blot - Anti-PKC zeta antibody [EP1490(2)]
(ab108970)

Lane 1: Wild-type HAP1 cell lysate (20 µg)

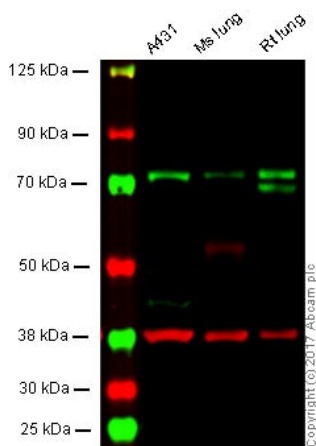
Lane 2: PKC zeta knockout HAP1 cell lysate (20 µg)

Lane 3: HT-29 cell lysate (20 µg)

Lane 4: A431 cell lysate (20 µg)

Lanes 1 - 4: Merged signal (red and green). Green - ab108970
observed at 74 kDa. Red - loading control, **ab8226**, observed at 42
kDa.

ab108970 was shown to specifically react with PKC zeta when
PKC zeta knockout samples were used. Wild-type and PKC
zeta knockout samples were subjected to SDS-PAGE. ab108970
and **ab8226** (loading control to beta actin) were both diluted 1/1000
and incubated overnight at 4°C. Blots were developed with Goat
anti-Rabbit IgG H&L (IRDye® 800CW) preadsorbed (**ab216773**)
and Goat anti-Mouse IgG H&L (IRDye® 680RD) preadsorbed
(**ab216776**) secondary antibodies at 1/10000 dilution for 1 h at
room temperature before imaging.



Western blot - Anti-PKC zeta antibody [EP1490(2)] (ab108970)

All lanes : Anti-PKC zeta antibody [EP1490(2)] (ab108970) at 1/1000 dilution

Lane 1 : A431 whole cell lysate

Lane 2 : Mouse lung tissue lysate

Lane 3 : Rat lung tissue lysate

Lysates/proteins at 20 µg per lane.

Secondary

All lanes : Goat anti-Rabbit IgG H&L (IRDye® 800CW) preadsorbed ([ab216773](#)) at 1/10000 dilution

Performed under reducing conditions.

Predicted band size: 74 kDa

Observed band size: 74 kDa

Lanes 1 - 3: Merged signal (red and green). Green - ab108970 observed at 74 kDa. Red - loading control, [ab8245](#), observed at 37 kDa.

This blot was produced using a 4-12% Bis-tris gel under the MOPS buffer system. The gel was run at 200V for 50 minutes before being transferred onto a Nitrocellulose membrane at 30V for 70 minutes. The membrane was then blocked for an hour using Licor blocking buffer before being incubated with ab108970 and [ab8245](#) (loading control) overnight at 4°C. Antibody binding was detected using Goat anti-Rabbit IgG H&L (IRDye® 800CW) preabsorbed ([ab216773](#)) and Goat anti-Mouse IgG H&L (IRDye® 680RD) preabsorbed ([ab216776](#)) at a 1:10000 dilution for 1hr at room temperature and then imaged.

Please note: All products are "FOR RESEARCH USE ONLY. NOT FOR USE IN DIAGNOSTIC PROCEDURES"

Our Abpromise to you: Quality guaranteed and expert technical support

- Replacement or refund for products not performing as stated on the datasheet
- Valid for 12 months from date of delivery
- Response to your inquiry within 24 hours
- We provide support in Chinese, English, French, German, Japanese and Spanish

- Extensive multi-media technical resources to help you
- We investigate all quality concerns to ensure our products perform to the highest standards

If the product does not perform as described on this datasheet, we will offer a refund or replacement. For full details of the Abpromise, please visit <https://www.abcam.co.jp/abpromise> or contact our technical team.

Terms and conditions

- Guarantee only valid for products bought direct from Abcam or one of our authorized distributors