

Anti-PKC zeta antibody ab59364

★★★★★ **4 Abreviews** **21 References** 画像数 6

製品の概要

製品名	Anti-PKC zeta antibody
製品の詳細	Rabbit polyclonal to PKC zeta
由来種	Rabbit
特異性	ab59364 detects endogenous levels of total PKC zeta protein. The immunogen used for this product shares 89% homology with PKC iota/lambda. Cross-reactivity with this protein has not been confirmed experimentally.
アプリケーション	適用あり: ELISA, IHC-P, IP, WB, ICC/IF
種交差性	交差種: Mouse, Rat, Human, Xenopus laevis, African green monkey
免疫原	Synthetic peptide within Human PKC zeta aa 526-575. The exact sequence is proprietary. Synthesized non-phosphopeptide derived from human PKC zeta around the phosphorylation site of threonine 560 (Q-L-TP-P-D). Database link: Q05513
ポジティブ・コントロール	IHC-P: Human proliferative endometrial tissue, human brain tissue. ICC: NIH/3T3 cells. WB: Rat hippocampus lysate.
特記事項	The Life Science industry has been in the grips of a reproducibility crisis for a number of years. Abcam is leading the way in addressing this with our range of recombinant monoclonal antibodies and knockout edited cell lines for gold-standard validation. Please check that this product meets your needs before purchasing. If you have any questions, special requirements or concerns, please send us an inquiry and/or contact our Support team ahead of purchase. Recommended alternatives for this product can be found below, along with publications, customer reviews and Q&As

製品の特性

製品の状態	Liquid
保存方法	Shipped at 4°C. Store at +4°C short term (1-2 weeks). Upon delivery aliquot. Store at -20°C long term. Avoid freeze / thaw cycle.
バッファー	pH: 7.40 Preservative: 0.02% Sodium azide Constituents: PBS, 50% Glycerol, 0.87% Sodium chloride
精製度	Immunogen affinity purified

ポリモノ
アイソタイプ

ポリクローナル
IgG

アプリケーション

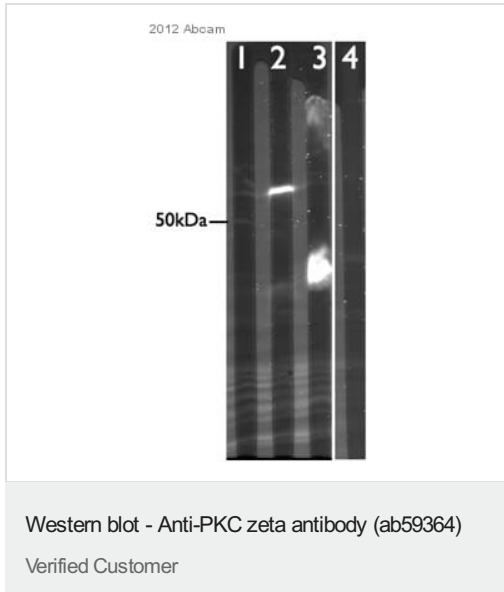
The Abpromise guarantee **Abpromise保証は、** 次のテスト済みアプリケーションにおけるab59364の使用に適用されます
アプリケーションノートには、推奨の開始希釈率がありますが、適切な希釈率につきましてはご確認ください。

アプリケーション	Abreviews	特記事項
ELISA		Use at an assay dependent concentration.
IHC-P	★★★★★ (1)	1/50 - 1/100.
IP		Use at an assay dependent concentration.
WB	★★★★★ (2)	Use at an assay dependent concentration. Predicted molecular weight: 68 kDa.
ICC/IF		1/100 - 1/500.

ターゲット情報

機能	This is a calcium-independent, phospholipid-dependent, serine- and threonine-specific enzyme. Phosphorylates 'Ser-311' of RELA subunit of NF-kappa-B. PKC is activated by diacylglycerol which in turn phosphorylates a range of cellular proteins. PKC also serves as the receptor for phorbol esters, a class of tumor promoters. Subunit of a quaternary complex that plays a central role in epithelial cell polarization.
組織特異性	Expressed in brain, and to a lesser extent in lung, kidney and testis.
配列類似性	Belongs to the protein kinase superfamily. AGC Ser/Thr protein kinase family. PKC subfamily. Contains 1 AGC-kinase C-terminal domain. Contains 1 OPR domain. Contains 1 phorbol-ester/DAG-type zinc finger. Contains 1 protein kinase domain.
ドメイン	The OPR domain mediates mutually exclusive interactions with SQSTM1 and PARD6B. The C1 domain does not bind the diacylglycerol (DAG).
翻訳後修飾	CDH5 is required for its phosphorylation at Thr-410.
細胞内局在	Cytoplasm. Endosome. Cell junction. In the retina, localizes in the terminals of the rod bipolar cells (By similarity). Associates with endosomes. Presence of KRIT1, CDH5 and RAP1B is required for its localization to the cell junction.

画像



Anti-PKC zeta antibody (ab59364) at 1/500 dilution + *Xenopus laevis* cytoplasmic egg extract at 40 µg

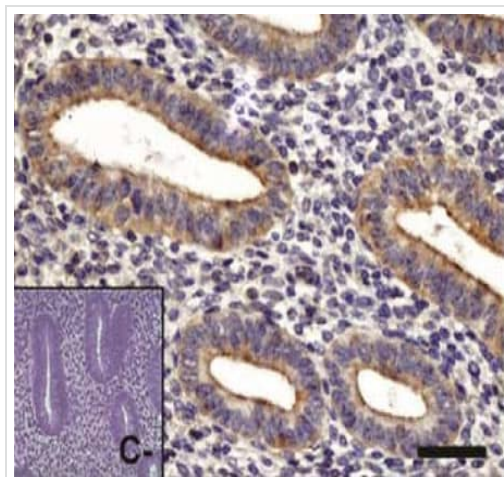
Secondary

Goat polyclonal - IRDye® 800CW at 1/10000 dilution

Performed under reducing conditions.

Predicted band size: 68 kDa

Exposure time: 5 seconds

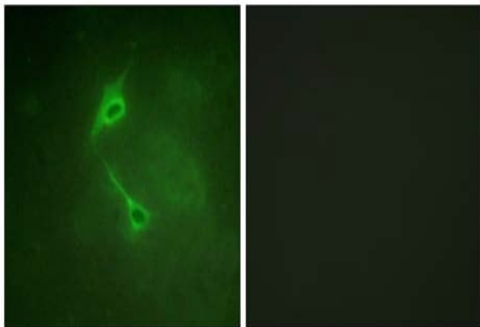


Immunohistochemical analysis of human proliferative endometrial tissue, staining PKC zeta with ab59364.

Antigen retrieval was performed by heat mediation in a citrate buffer. Tissue was blocked with blocking solution before incubating with primary antibody (1/100) overnight at 4°C. Staining was detected using DAB.

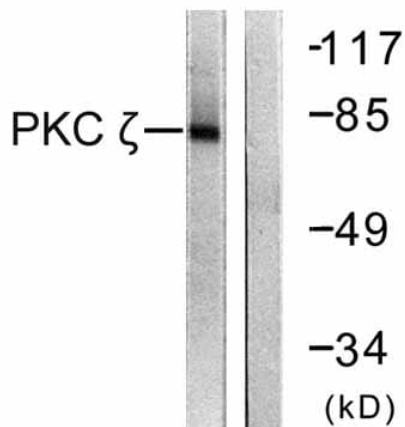
Immunohistochemistry (Formalin/PFA-fixed paraffin-embedded sections) - Anti-PKC zeta antibody (ab59364)

Image from Rivero R et al., Reproductive Biology and Endocrinology 2012, 10:17, 5 March 2012. Fig 1.; doi: 10.1186/1477-7827-10-17.



Immunofluorescence analysis of NIH/3T3 cells using PKC zeta at dilution of 1:100.

Immunocytochemistry/ Immunofluorescence - Anti-PKC zeta antibody (ab59364)



All lanes : Anti-PKC zeta antibody (ab59364) at 1/500 dilution

Lane 1 : Extracts from COS-7 (African green monkey kidney fibroblast-like cell line) cells, treated with PMA (125 ng/ml, 30mins), without immunizing peptide

Lane 2 : Extracts from COS7 (African green monkey kidney fibroblast-like cell line) cells, treated with PMA (125 ng/ml, 30mins), plus immunizing peptide

Predicted band size: 68 kDa

Observed band size: 80 kDa

Western blot - Anti-PKC zeta antibody (ab59364)



Western blot - Anti-PKC zeta antibody (ab59364)

This image is courtesy of an Abreview submitted by Mr Richard D'Mello

Lanes 2-4 : Anti-PKC zeta antibody (ab59364) at 1/500 dilution

Lanes 1-2 : Rat hippocampus lysate at 40 µg

Lanes 3-4 : Rat hippocampus lysate at 20 µg

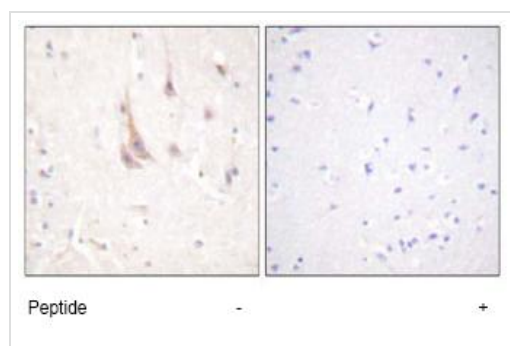
Secondary

All lanes : Anti-Rabbit IR800-linked conjugation: IRDye® 800CW

Performed under reducing conditions.

Predicted band size: 68 kDa

Exposure time: 5 minutes



Immunohistochemistry (Formalin/PFA-fixed paraffin-embedded sections) - Anti-PKC zeta antibody (ab59364)

ab59364 at a 1/50 dilution staining PKC zeta in formalin/PFA fixed paraffin-embedded human brain tissue using Immunohistochemistry.

Left panel: Without immunizing peptide.

Right image: Plus immunizing peptide.

Please note: All products are "FOR RESEARCH USE ONLY. NOT FOR USE IN DIAGNOSTIC PROCEDURES"

Our Abpromise to you: Quality guaranteed and expert technical support

- Replacement or refund for products not performing as stated on the datasheet
- Valid for 12 months from date of delivery
- Response to your inquiry within 24 hours
- We provide support in Chinese, English, French, German, Japanese and Spanish
- Extensive multi-media technical resources to help you
- We investigate all quality concerns to ensure our products perform to the highest standards

If the product does not perform as described on this datasheet, we will offer a refund or replacement. For full details of the Abpromise, please visit <https://www.abcam.co.jp/abpromise> or contact our technical team.

Terms and conditions

- Guarantee only valid for products bought direct from Abcam or one of our authorized distributors