

Anti-PKC mu/PKD (phospho S916) antibody [EP1494Y] ab81218

RabMAb

2 References 画像数 3

製品の概要

製品名	Anti-PKC mu/PKD (phospho S916) antibody [EP1494Y]
製品の詳細	Rabbit monoclonal [EP1494Y] to PKC mu/PKD (phospho S916)
由来種	Rabbit
アプリケーション	適用あり: WB, IHC-P, IP 適用なし: Flow Cyt or ICC/IF
種交差性	交差種: Human
免疫原	Synthetic peptide. This information is proprietary to Abcam and/or its suppliers.
ポジティブ・コントロール	WB: lysate from HeLa cells treated with TPA. IHC: Human placenta tissue.
特記事項	<p>Our RabMAb[®] technology is a patented hybridoma-based technology for making rabbit monoclonal antibodies. For details on our patents, please refer to RabMAb[®] patents.</p> <p>The Life Science industry has been in the grips of a reproducibility crisis for a number of years. Abcam is leading the way in addressing this with our range of recombinant monoclonal antibodies and knockout edited cell lines for gold-standard validation. Please check that this product meets your needs before purchasing.</p> <p>If you have any questions, special requirements or concerns, please send us an inquiry and/or contact our Support team ahead of purchase. Recommended alternatives for this product can be found below, along with publications, customer reviews and Q&As</p> <p>Mouse, Rat: We have preliminary internal testing data to indicate this antibody may not react with these species. Please contact us for more information.</p>

製品の特性

製品の状態	Liquid
保存方法	Shipped at 4°C. Upon delivery aliquot and store at -20°C. Avoid repeated freeze / thaw cycles.
バッファー	pH: 7.20 Preservative: 0.05% Sodium azide Constituents: 0.1% BSA, 40% Glycerol (glycerin, glycerine), 9.85% Tris glycine, 50% Tissue culture supernatant
精製度	Tissue culture supernatant

ポリ/モノ	モノクローナル
クローン名	EP1494Y
アイソタイプ	IgG

アプリケーション

The Abpromise guarantee Abpromise保証は、次のテスト済みアプリケーションにおけるab81218の使用に適用されます
アプリケーションノートには、推奨の開始希釈率がありますが、適切な希釈率につきましてはご検討ください。

アプリケーション	Abreviews	特記事項
WB		1/50000 - 1/100000. Predicted molecular weight: 102 kDa.
IHC-P		1/100 - 1/250. Perform heat mediated antigen retrieval with Tris/EDTA buffer pH 9.0 before commencing with IHC staining protocol.
IP		1/60.

追加情報 Is unsuitable for Flow Cyt or ICC/IF.

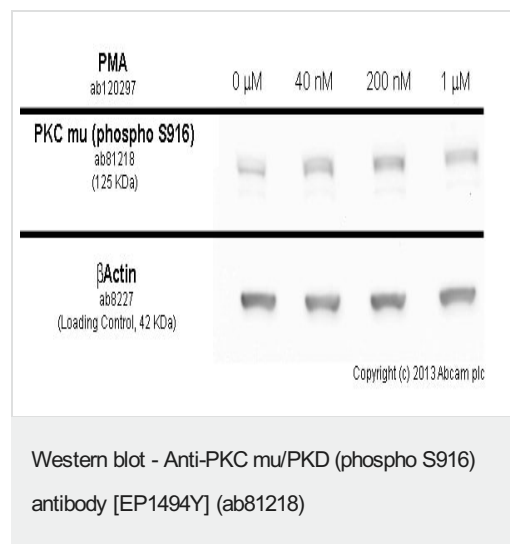
ターゲット情報

機能	Converts transient diacylglycerol (DAG) signals into prolonged physiological effects, downstream of PKC. Involved in resistance to oxidative stress through activation of NF-kappa-B.
----	---

配列類似性	<p>Belongs to the protein kinase superfamily. CAMK Ser/Thr protein kinase family. PKD subfamily.</p> <p>Contains 1 PH domain.</p> <p>Contains 2 phorbol-ester/DAG-type zinc fingers.</p> <p>Contains 1 protein kinase domain.</p>
--------------	---

細胞内局在 Cytoplasm. Membrane. Translocation to the cell membrane is required for kinase activation.

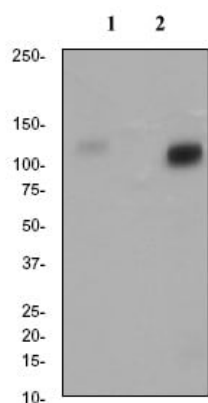
画像



Serum starved HeLa cells were incubated at 37°C for 60 minutes with vehicle control (0 μ M) and different concentrations of phorbol 12-myristate 13-acetate (PMA) (**ab120297**) in DMSO. Increased expression of PKC μ /PKD (phospho S916) (**ab81218**) correlates with an increase in phorbol 12-myristate 13-acetate (PMA) concentration, as described in literature.

Whole cell lysates were prepared with RIPA buffer (containing protease inhibitors and sodium orthovanadate), 20µg of each were loaded on the gel and the WB was run under reducing conditions. After transfer the membrane was blocked for an hour using 3% milk before being incubated with ab81218 at 1 µg/ml and **ab8227** at 1 µg /ml overnight at 4°C. Antibody binding was detected using an

anti-rabbit HRP secondary antibody (**ab97051**) at 1/10000 dilution and visualised using ECL development solution.



Western blot - Anti-PKC mu/PKD (phospho S916) antibody [EP1494Y] (ab81218)

All lanes : Anti-PKC mu/PKD (phospho S916) antibody [EP1494Y] (ab81218) at 1/100000 dilution

Lane 1 : lysate from untreated HeLa cells

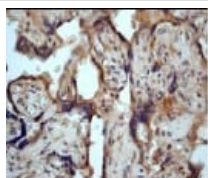
Lane 2 : lysate from HeLa cells treated with TPA

Lysates/proteins at 10 µg per lane.

Secondary

All lanes : HRP labelled Goat anti-Rabbit at 1/2000 dilution

Predicted band size: 102 kDa



Immunohistochemistry (Formalin/PFA-fixed paraffin-embedded sections) - Anti-PKC mu/PKD (phospho S916) antibody [EP1494Y] (ab81218)

Immunohistochemistry analysis of paraffin-embedded Human placenta tissue using 1/100 ab81218.

Perform heat mediated antigen retrieval with EDTA buffer pH 9 before commencing with IHC staining protocol.

Please note: All products are "FOR RESEARCH USE ONLY. NOT FOR USE IN DIAGNOSTIC PROCEDURES"

Our Abpromise to you: Quality guaranteed and expert technical support

- Replacement or refund for products not performing as stated on the datasheet
- Valid for 12 months from date of delivery
- Response to your inquiry within 24 hours
- We provide support in Chinese, English, French, German, Japanese and Spanish
- Extensive multi-media technical resources to help you
- We investigate all quality concerns to ensure our products perform to the highest standards

If the product does not perform as described on this datasheet, we will offer a refund or replacement. For full details of the Abpromise, please visit <https://www.abcam.co.jp/abpromise> or contact our technical team.

Terms and conditions

- Guarantee only valid for products bought direct from Abcam or one of our authorized distributors