


Anti-PKC eta (phospho T655) antibody ab5798

3 References [画像数 1](#)

製品の概要

製品名	Anti-PKC eta (phospho T655) antibody
製品の詳細	Rabbit polyclonal to PKC eta (phospho T655)
由来種	Rabbit
特異性	This antibody does not cross-react with any other PKC isoforms tested.
アプリケーション	適用あり: WB
種交差性	交差種: Human 交差が予測される動物種: Mouse, Rat 
免疫原	Synthetic peptide corresponding to PKC eta (phospho T655).
ポジティブ・コントロール	Jurkat cells treated with PMA, a phorbol ester.
特記事項	<p>The Life Science industry has been in the grips of a reproducibility crisis for a number of years. Abcam is leading the way in addressing this with our range of recombinant monoclonal antibodies and knockout edited cell lines for gold-standard validation. Please check that this product meets your needs before purchasing.</p> <p>If you have any questions, special requirements or concerns, please send us an inquiry and/or contact our Support team ahead of purchase. Recommended alternatives for this product can be found below, along with publications, customer reviews and Q&As</p>

製品の特性

製品の状態	Liquid
保存方法	Shipped at 4°C. Upon delivery aliquot and store at -20°C or -80°C. Avoid repeated freeze / thaw cycles.
バッファー	pH: 7.30 Preservative: 0.05% Sodium azide Constituents: PBS, 0.1% BSA
精製度	Immunogen affinity purified
特記事項 (精製)	The antibody has been negatively preadsorbed using a non-phosphopeptide corresponding to the site of phosphorylation to remove antibody that is reactive with non-phosphorylated PKC eta. The final product is generated by affinity chromatography using a PKC eta-derived peptide that is phosphorylated at threonine 655.

ポリ/モノ
アイソタイプ

ポリクローナル
IgG

アプリケーション

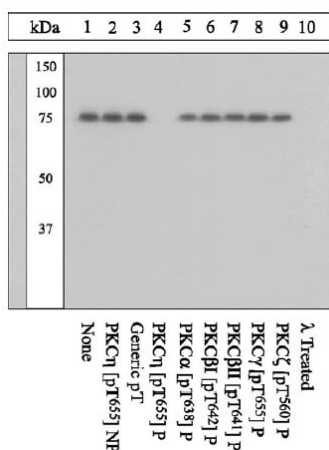
The Abpromise guarantee Abpromise保証は、 次のテスト済みアプリケーションにおけるab5798の使用に適用されます
アプリケーションノートには、推奨の開始希釈率がありますが、適切な希釈率につきましてはご検討ください。

アプリケーション	Abreviews	特記事項
WB		Use a concentration of 0.35 - 1 µg/ml. Detects a band of approximately 80 kDa.

ターゲット情報

機能	This is calcium-independent, phospholipid-dependent, serine- and threonine-specific enzyme. PKC is activated by diacylglycerol which in turn phosphorylates a range of cellular proteins. PKC also serves as the receptor for phorbol esters, a class of tumor promoters.
組織特異性	Most abundant in lung, less in heart and skin.
関連疾患	Defects in PRKCH may be a cause of susceptibility to ischemic stroke (ISCHSTR) [MIM:601367]; also known as cerebrovascular accident or cerebral infarction. A stroke is an acute neurologic event leading to death of neural tissue of the brain and resulting in loss of motor, sensory and/or cognitive function. Ischemic strokes, resulting from vascular occlusion, is considered to be a highly complex disease consisting of a group of heterogeneous disorders with multiple genetic and environmental risk factors.
配列類似性	Belongs to the protein kinase superfamily. AGC Ser/Thr protein kinase family. PKC subfamily. Contains 1 AGC-kinase C-terminal domain. Contains 1 C2 domain. Contains 2 phorbol-ester/DAG-type zinc fingers. Contains 1 protein kinase domain.
ドメイン	The C1 domain, containing the phorbol ester/DAG-type region 1 (C1A) and 2 (C1B), is the diacylglycerol sensor and the C2 domain is a non-calcium binding domain.

画像



Western blot - Anti-PKC eta (phospho T655)
antibody (ab5798)

Peptide Competition and Phosphatase Treatment Lysates prepared from Jurkat cells stimulated with PMA were resolved by SDS-PAGE on a 10% polyacrylamide gel and transferred to PVDF. Membranes were either left untreated (1-9) or treated with lambda phosphatase (10), blocked with a 5% BSA-TBST buffer overnight at 4°C, and incubated with 0.50 µg/mL ab5798 antibody for two hours at room temperature in a 3% BSA-TBST buffer, following prior incubation with: no peptide (1, 10), the non phosphopeptide corresponding to the immunogen (2), a generic phosphothreonine containing peptide (3), the phosphopeptide immunogen (4), or, the phosphopeptide corresponding to the immunogen from other PKC isoforms (5-9). After washing, membranes were incubated with goat (ab')₂ anti-rabbit IgG HRP-conjugate and bands were detected using the Pierce SuperSignalTM method. The data show that the peptide corresponding to PKC eta [pT655] blocks the antibody signal. The antibody signal was not blocked by the peptides corresponding to PKC isoforms alpha [pT638], beta 1 [pT642], beta 1 [pT641], gamma [pT655] and zeta [pT560], thereby demonstrating the specificity of the antibody. The data also show that phosphatase stripping eliminates the signal, verifying that the antibody is phospho-specific.

Peptide Competition and Phosphatase Treatment Lysates prepared from Jurkat cells stimulated with PMA were resolved by SDS-PAGE on a 10% polyacrylamide gel and transferred to PVDF. Membranes were either left untreated (1-9) or treated with lambda phosphatase (10), blocked with a 5% BSA-TBST buffer overnight at 4°C, and incubated with 0.50 µg/mL ab5798 antibody for two hours at room temperature in a 3% BSA-TBST buffer, following prior incubation with: no peptide (1, 10), the non phosphopeptide corresponding to the immunogen (2), a generic phosphothreonine containing peptide (3), the phosphopeptide immunogen (4), or, the phosphopeptide corresponding to the immunogen from other PKC isoforms (5-9). After washing, membranes were incubated with goat (ab')₂ anti-rabbit IgG HRP-conjugate and bands were detected

using the Pierce SuperSignal™ method. The data show that the peptide corresponding to PKC eta [pT655] blocks the antibody signal. The antibody signal was not blocked by the peptides corresponding to PKC isoforms alpha [pT638], beta 1 [pT642], beta 1 [pT641], gamma [pT655] and zeta [pT560], thereby demonstrating the specificity of the antibody. The data also show that phosphatase stripping eliminates the signal, verifying that the antibody is phospho-specific.

Please note: All products are "FOR RESEARCH USE ONLY. NOT FOR USE IN DIAGNOSTIC PROCEDURES"

Our Abpromise to you: Quality guaranteed and expert technical support

- Replacement or refund for products not performing as stated on the datasheet
- Valid for 12 months from date of delivery
- Response to your inquiry within 24 hours
- We provide support in Chinese, English, French, German, Japanese and Spanish
- Extensive multi-media technical resources to help you
- We investigate all quality concerns to ensure our products perform to the highest standards

If the product does not perform as described on this datasheet, we will offer a refund or replacement. For full details of the Abpromise, please visit <https://www.abcam.co.jp/abpromise> or contact our technical team.

Terms and conditions

- Guarantee only valid for products bought direct from Abcam or one of our authorized distributors