

Anti-PKC delta (phospho S645) antibody [EP1486Y] ab108972

KO 評価済 リコンビナント RabMAb

[3 Abreviews](#) [5 References](#) [画像数 7](#)

製品の概要

製品名	Anti-PKC delta (phospho S645) antibody [EP1486Y]
製品の詳細	Rabbit monoclonal [EP1486Y] to PKC delta (phospho S645)
由来種	Rabbit
アプリケーション	適用あり: ELISA, Dot blot, WB, IHC-P 適用なし: Flow Cyt, ICC/IF or IP
種交差性	交差種: Human
免疫原	Synthetic peptide. This information is proprietary to Abcam and/or its suppliers.
ポジティブ・コントロール	293T cell lysate; Human spleen and bladder carcinoma; HeLa cells.
特記事項	<p>This product has switched from a hybridoma to recombinant production method on 20th November 2023.</p> <p>This product is a recombinant monoclonal antibody, which offers several advantages including:</p> <ul style="list-style-type: none">- High batch-to-batch consistency and reproducibility- Improved sensitivity and specificity- Long-term security of supply- Animal-free production <p>For more information see here.</p> <p>Our RabMAb[®] technology is a patented hybridoma-based technology for making rabbit monoclonal antibodies. For details on our patents, please refer to RabMAb[®] patents.</p>

製品の特性

製品の状態	Liquid
保存方法	Shipped at 4°C. Store at -20°C. Stable for 12 months at -20°C.
バッファー	pH: 7.20 Preservative: 0.01% Sodium azide Constituents: 0.05% BSA, 40% Glycerol (glycerin, glycerine), 59% PBS
精製度	Protein A purified
ポリ/モノ	モノクローナル
クローン名	EP1486Y

アプリケーション

The Abpromise guarantee Abpromise保証は、 次のテスト済みアプリケーションにおけるab108972の使用に適用されます
アプリケーションノートには、推奨の開始希釈率がありますが、適切な希釈率につきましてはご確認ください。

アプリケーション	Abreviews	特記事項
ELISA		Use at an assay dependent concentration.
Dot blot		1/1000.
WB		1/10000 - 1/50000. Predicted molecular weight: 78 kDa.
IHC-P		1/500. Perform heat mediated antigen retrieval before commencing with IHC staining protocol.

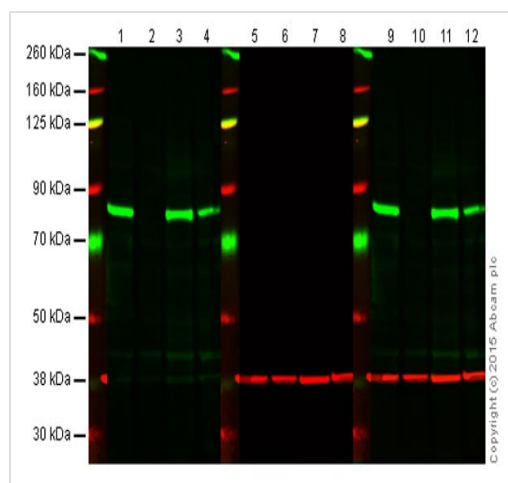
追加情報

Is unsuitable for Flow Cyt, ICC/IF or IP.

ターゲット情報

機能	This is calcium-independent, phospholipid-dependent, serine- and threonine-specific enzyme. PKC is activated by diacylglycerol which in turn phosphorylates a range of cellular proteins. PKC also serves as the receptor for phorbol esters, a class of tumor promoters. May play a role in antigen-dependent control of B-cell function. Phosphorylates MUC1 in the C-terminal and regulates the interaction between MUC1 and beta-catenin.
配列類似性	Belongs to the protein kinase superfamily. AGC Ser/Thr protein kinase family. PKC subfamily. Contains 1 AGC-kinase C-terminal domain. Contains 1 C2 domain. Contains 2 phorbol-ester/DAG-type zinc fingers. Contains 1 protein kinase domain.
ドメイン	The C1 domain, containing the phorbol ester/DAG-type region 1 (C1A) and 2 (C1B), is the diacylglycerol sensor. The C2 domain is a non-calcium binding domain. It binds proteins containing phosphotyrosine in a sequence-specific manner.
翻訳後修飾	Phosphorylated on Thr-507, within the activation loop. Autophosphorylated and/or phosphorylated. Although the Thr-507 phosphorylation occurs it is not a prerequisite for enzymatic activity.
細胞内局在	Cytoplasm. Membrane.

画像



Western blot - Anti-PKC delta (phospho S645)
antibody [EP1486Y] (ab108972)

Lanes 1, 5 and 9: Wild-type HAP1 cell lysate (20 µg)

Lanes 2, 6 and 10: PKC delta knockout HAP1 cell lysate (20 µg)

Lanes 3, 7 and 11: A431 cell lysate (20 µg)

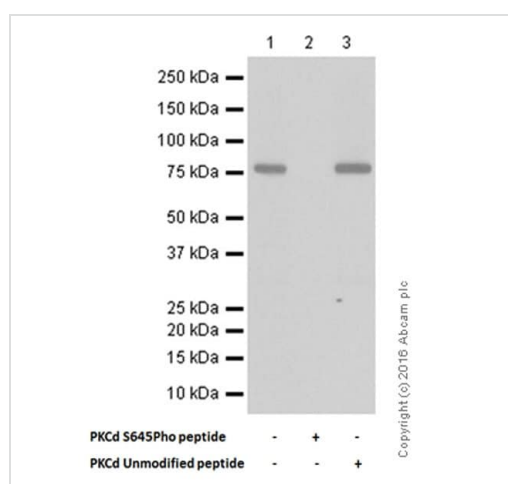
Lanes 4, 8 and 12: HeLa cell lysate (20 µg)

Lanes 1, 2, 3 and 4: Green signal from target – ab108972
observed at 78 kDa

Lanes 5, 6, 7 and 8: Red signal from loading control – **ab8245**
observed at 37 kDa

Lanes 9, 10, 11 and 12: Merged (red and green) signal

ab108972 was shown to specifically react with PKC delta when PKC delta knockout samples were used. Wild-type and PKC delta knockout samples were subjected to SDS-PAGE. ab108972 and **ab8245** (loading control to GAPDH) were diluted 1/10000 and 1/2000 respectively and incubated overnight at 4°C. Blots were developed with Goat anti-Rabbit IgG H&L (IRDye® 800CW) preadsorbed (**ab216773**) and Goat anti-Mouse IgG H&L (IRDye® 680RD) preadsorbed (**ab216776**) secondary antibodies at 1/10000 dilution for 1 h at room temperature before imaging.



Western blot - Anti-PKC delta (phospho S645)
antibody [EP1486Y] (ab108972)

Primary ab Dilution 1:100,000 dilution, Secondary ab Goat Anti-Rabbit IgG, (H+L), HRP conjugated (**ab97051**), Secondary ab dilution 1:20,000 dilution,

Blocking buffer and concentration 5% NFDm/TBST, Diluting buffer and concentration 5% NFDm/TBST,

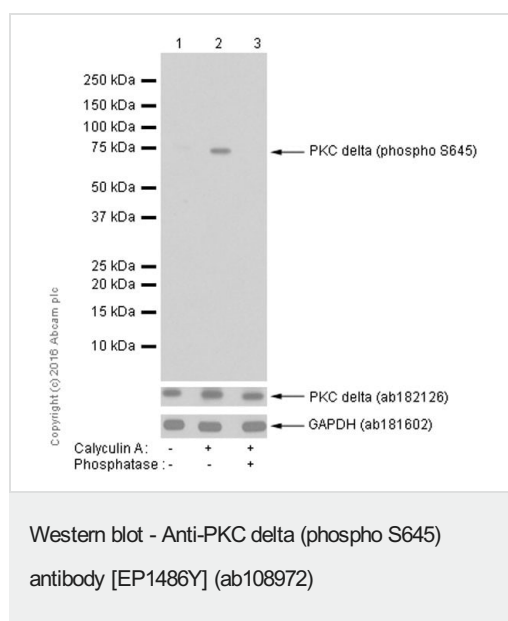
Lane 1: THP-1 whole cell lysate treated with Calyculin A with no peptides,

Lane 2: THP-1 whole cell lysate treated with Calyculin A with PKCd S645Pho peptides,

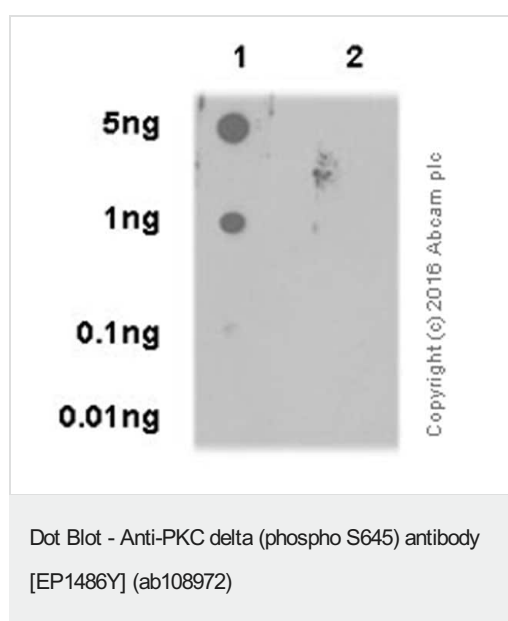
Lane 3: THP-1 whole cell lysate treated with Calyculin A with PKCd unmodified peptides,

Observed MW 78 kDa,

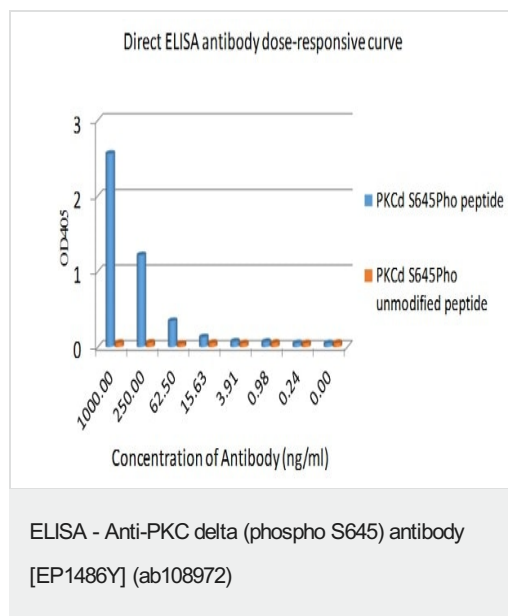
Exposure time 10 seconds



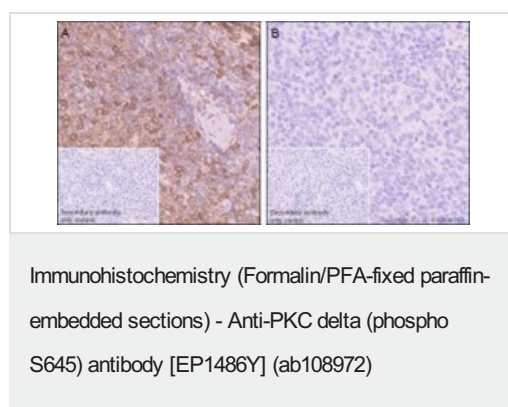
Primary ab Dilution 1:100,000 dilution, Secondary ab description and code (ab id) Goat Anti-Rabbit IgG, (H+L), HRP conjugated ([ab97051](#)), Secondary ab dilution 1: 20,000 dilution, Blocking buffer and concentration 5% NFDM/TBST, Diluting buffer and concentration 5% NFDM/TBST, Lane 1: Untreated THP-1 (Human monocytic leukemia cell line) whole cell lysates 15ug, Lane 2: THP-1 (Human monocytic leukemia cell line) treated with 50nM Calyculin A for 60 minutes whole cell lysates 15ug. Lane 3: THP-1 (Human monocytic leukemia cell line) treated with 50nM Calyculin A for 60 minutes' whole cell lysates 15ug. Then the membrane was incubated with phosphatase. Lane 4: None, Observed MW 78 kDa, Exposure time 5 seconds



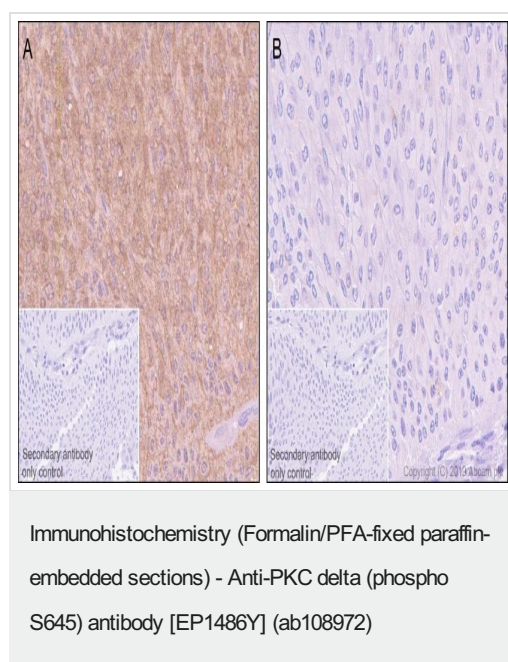
Primary ab dilution 1: 1000 dilution (2.355 µg /ml), Secondary ab description and code (ab id) Goat Anti-Rabbit IgG, (H+L), HRP conjugated ([ab97051](#)), Secondary ab dilution 1:100,000 dilution, Blocking buffer and concentration 5% NFDM/TBST, Diluting buffer and concentration 5% NFDM /TBST, Lane 1: PKCd S645Pho peptides, Lane 2: PKCd unmodified peptides, Lane 3: None, Lane 4: None, Observed MW N/A, Exposure time 3 minutes



Antigen PKCd S645Pho peptide, PKCd S645Pho unmodified peptide, Antigen concentration 1000ng/ml, Primary antibody concentration range 0~1000ng/ml, Secondary antibody Alkaline Phosphatase-conjugated AffiniPure Goat Anti-Rabbit IgG(H+L), Secondary antibody concentration 1:2500 dilution



Immunohistochemical analysis of paraffin-embedded Human spleen carcinoma labeling PKC delta with ab108972 at 1/500 dilution (0.60 µg/ml). Positive staining on human spleen carcinoma without alkaline phosphatase treatment (image A). No signal was detected when tissues were treated with alkaline phosphatase (image B). The section was incubated with ab108972 for 30 mins at room temperature. The immunostaining was performed on a Leica Biosystems BOND® RX instrument. Counterstained with Hematoxylin. Heat mediated antigen retrieval was performed with Bond™ Epitope Retrieval Solution 2 (pH 9.0) for 20 minutes.



Immunohistochemical analysis of paraffin-embedded Human bladder carcinoma labeling PKC delta with ab108972 at 1/500 dilution (0.60 µg/ml). Positive staining on human bladder carcinoma without alkaline phosphatase treatment (image A). No signal was detected when tissues were treated with alkaline phosphatase (image B). The section was incubated with ab108972 for 30 mins at room temperature. The immunostaining was performed on a Leica Biosystems BOND® RX instrument. Counterstained with Hematoxylin. Heat mediated antigen retrieval was performed with Bond™ Epitope Retrieval Solution 2 (pH 9.0) for 20 minutes.

Please note: All products are "FOR RESEARCH USE ONLY. NOT FOR USE IN DIAGNOSTIC PROCEDURES"

Our Abpromise to you: Quality guaranteed and expert technical support

- Replacement or refund for products not performing as stated on the datasheet
- Valid for 12 months from date of delivery
- Response to your inquiry within 24 hours

- We provide support in Chinese, English, French, German, Japanese and Spanish
- Extensive multi-media technical resources to help you
- We investigate all quality concerns to ensure our products perform to the highest standards

If the product does not perform as described on this datasheet, we will offer a refund or replacement. For full details of the Abpromise, please visit <https://www.abcam.co.jp/abpromise> or contact our technical team.

Terms and conditions

- Guarantee only valid for products bought direct from Abcam or one of our authorized distributors