

Anti-PKA R2/PKR2 antibody ab38949

★★★★★ [7 Abreviews](#) [17 References](#) [画像数 2](#)

製品の概要

製品名	Anti-PKA R2/PKR2 antibody
製品の詳細	Rabbit polyclonal to PKA R2/PKR2
由来種	Rabbit
特異性	ab38949 binds to PKAR1a, but does not cross react with the other PKA regulatory subunits (PKAR1a, PKAR1b, PKAR1b) and can recognize native or reduced PKAR1a.
アプリケーション	適用あり: ICC/IF
種交差性	交差種: Human
免疫原	Synthetic peptide. This information is proprietary to Abcam and/or its suppliers.
特記事項	<p>Store diluted antibody at 4°C with 0.05% Sodium Azide as preservative.</p> <p>The Life Science industry has been in the grips of a reproducibility crisis for a number of years. Abcam is leading the way in addressing this with our range of recombinant monoclonal antibodies and knockout edited cell lines for gold-standard validation. Please check that this product meets your needs before purchasing.</p> <p>If you have any questions, special requirements or concerns, please send us an inquiry and/or contact our Support team ahead of purchase. Recommended alternatives for this product can be found below, along with publications, customer reviews and Q&As</p>

製品の特性

製品の状態	Liquid
保存方法	Shipped at 4°C. Store at +4°C short term (1-2 weeks). Upon delivery aliquot. Store at -20°C or -80°C. Avoid freeze / thaw cycle.
バッファー	Preservative: 0.05% Sodium azide Constituent: 50% Glycerol
精製度	Immunogen affinity purified
特記事項(精製)	ab38949 has been peptide-affinity purified.
ポリ/モノ	ポリクローナル
アイソタイプ	IgG

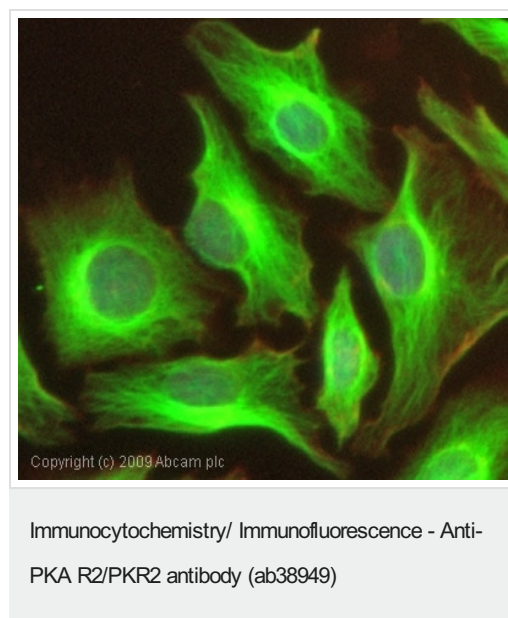
The Abpromise guarantee Abpromise保証は、 次のテスト済みアプリケーションにおけるab38949の使用に適用されます
アプリケーションノートには、推奨の開始希釈率がありますが、適切な希釈率につきましてはご検討ください。

アプリケーション	Abreviews	特記事項
ICC/IF		Use at an assay dependent concentration.

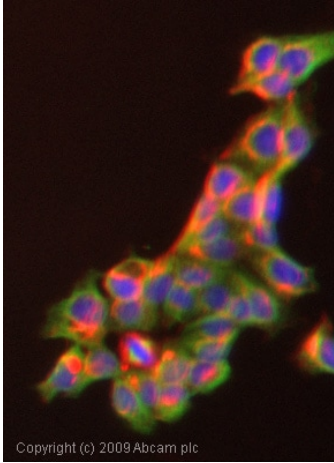
ターゲット情報

機能	Regulatory subunit of the cAMP-dependent protein kinases involved in cAMP signaling in cells. Type II regulatory chains mediate membrane association by binding to anchoring proteins, including the MAP2 kinase.
組織特異性	Four types of regulatory chains are found: I-alpha, I-beta, II-alpha, and II-beta. Their expression varies among tissues and is in some cases constitutive and in others inducible.
配列類似性	Belongs to the cAMP-dependent kinase regulatory chain family. Contains 2 cyclic nucleotide-binding domains.
翻訳後修飾	Phosphorylated by the activated catalytic chain.
細胞内局在	Cytoplasm. Cell membrane. Colocalizes with PJA2 in the cytoplasm and the cell membrane.

画像



ICC/IF image of ab38949 stained HeLa cells. The cells were 4% formaldehyde fixed (10 min) and then incubated in 1%BSA / 10% normal goat serum / 0.3M glycine in 0.1% PBS-Tween for 1h to permeabilise the cells and block non-specific protein-protein interactions. The cells were then incubated with the antibody (ab38949, 1µg/ml) overnight at +4°C. The secondary antibody (green) was Alexa Fluor® 488 goat anti-rabbit IgG (H+L) used at a 1/1000 dilution for 1h. Alexa Fluor® 594 WGA was used to label plasma membranes (red) at a 1/200 dilution for 1h. DAPI was used to stain the cell nuclei (blue) at a concentration of 1.43µM.



Copyright (c) 2009 Abcam plc

Immunocytochemistry/ Immunofluorescence - Anti-
PKA R2/PKR2 antibody (ab38949)

ICC/IF image of ab38949 stained HeLa cells. The cells were 4% PFA fixed (10 min) and then incubated in 1%BSA / 10% normal goat serum / 0.3M glycine in 0.1% PBS-Tween for 1h to permeabilise the cells and block non-specific protein-protein interactions. The cells were then incubated with the antibody (ab38949, 1µg/ml) overnight at +4°C. The secondary antibody (green) was Alexa Fluor® 488 goat anti-rabbit IgG (H+L) used at a 1/1000 dilution for 1h. Alexa Fluor® 594 WGA was used to label plasma membranes (red) at a 1/200 dilution for 1h. DAPI was used to stain the cell nuclei (blue) at a concentration of 1.43µM.

Please note: All products are "FOR RESEARCH USE ONLY. NOT FOR USE IN DIAGNOSTIC PROCEDURES"

Our Abpromise to you: Quality guaranteed and expert technical support

- Replacement or refund for products not performing as stated on the datasheet
- Valid for 12 months from date of delivery
- Response to your inquiry within 24 hours
- We provide support in Chinese, English, French, German, Japanese and Spanish
- Extensive multi-media technical resources to help you
- We investigate all quality concerns to ensure our products perform to the highest standards

If the product does not perform as described on this datasheet, we will offer a refund or replacement. For full details of the Abpromise, please visit <https://www.abcam.co.jp/abpromise> or contact our technical team.

Terms and conditions

- Guarantee only valid for products bought direct from Abcam or one of our authorized distributors