

Anti-PKA alpha/beta/gamma (catalytic subunit) (phospho T197) antibody [EP2606Y] ab75991

リコンビナント **RabMAb**

★★★★★ **3 Abreviews** **50 References** 画像数 8

製品の概要

製品名	Anti-PKA alpha/beta/gamma (catalytic subunit) (phospho T197) antibody [EP2606Y]
製品の詳細	Rabbit monoclonal [EP2606Y] to PKA alpha/beta/gamma (catalytic subunit) (phospho T197)
由来種	Rabbit
特異性	Detects PKA alpha/beta/gamma (catalytic subunit) phosphorylated on threonine 197. Moreover, the antibody will cross-react with PRKX/Y (pT203).
アプリケーション	適用あり: WB, IHC-P, Dot blot
種交差性	交差種: Mouse, Rat, Human
免疫原	Synthetic peptide within Human PKA alpha/beta/gamma (catalytic subunit) aa 150-250 (phospho T197). The exact sequence is proprietary.
ポジティブ・コントロール	WB: HeLa, NIH/3T3, C6 whole cell lysate IHC: human liver carcinoma, mouse kidney, rat kidney
特記事項	<p>We are constantly working hard to ensure we provide our customers with best in class antibodies. As a result of this work we are pleased to now offer this antibody in purified format. We are in the process of updating our datasheets. The purified format is designated 'PUR' on our product labels. If you have any questions regarding this update, please contact our Scientific Support team.</p> <p>This product is a recombinant monoclonal antibody, which offers several advantages including:</p> <ul style="list-style-type: none"> - High batch-to-batch consistency and reproducibility - Improved sensitivity and specificity - Long-term security of supply - Animal-free production <p>For more information see here.</p> <p>Our RabMAb[®] technology is a patented hybridoma-based technology for making rabbit monoclonal antibodies. For details on our patents, please refer to RabMAb[®] patents.</p>

製品の特性

製品の状態	Liquid
保存方法	Shipped at 4°C. Upon delivery aliquot and store at -20°C. Avoid repeated freeze / thaw cycles.

バッファー	pH: 7.20 Preservative: 0.01% Sodium azide Constituents: 59% PBS, 40% Glycerol (glycerin, glycerine), 0.05% BSA
精製度	Protein A purified
ポリ/モノ	モノクローナル
クローン名	EP2606Y
アイソタイプ	IgG

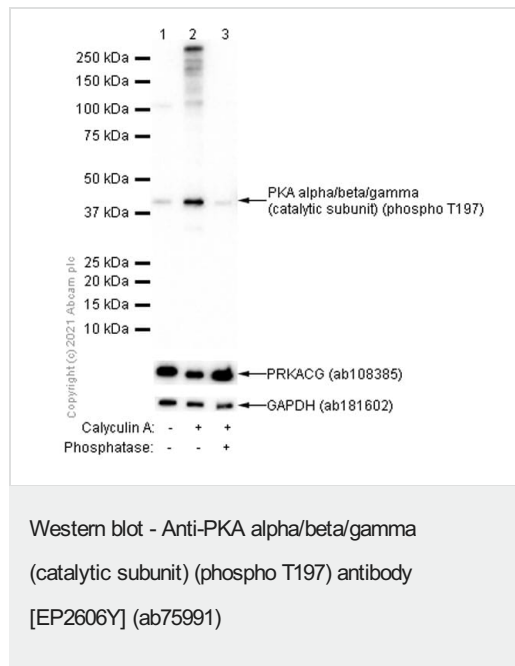
アプリケーション

The Abpromise guarantee **Abpromise保証は、次のテスト済みアプリケーションにおけるab75991の使用に適用されます**
 アプリケーションノートには、推奨の開始希釈率がありますが、適切な希釈率につきましてはご確認ください。

アプリケーション	Abreviews	特記事項
WB	★★★★★ (2)	1/1000. Predicted molecular weight: 40 kDa.
IHC-P		1/5000. Perform heat mediated antigen retrieval before commencing with IHC staining protocol. Use of HRP-conjugated or polymerized HRP secondary antibodies recommended, stronger signals have been found using the polymerized HRP secondary.
Dot blot		Use at an assay dependent concentration.

ターゲット情報

画像



All lanes : Anti-PKA alpha/beta/gamma (catalytic subunit) (phospho T197) antibody [EP2606Y] (ab75991) at 1/1000 dilution (Purified)

Lane 1 : Untreated HeLa (Human cervix adenocarcinoma epithelial cell) whole cell lysate

Lane 2 : HeLa (Human cervix adenocarcinoma epithelial cell) starved overnight, then treated with 100nM Calyculin A for 30 minutes, whole cell lysate

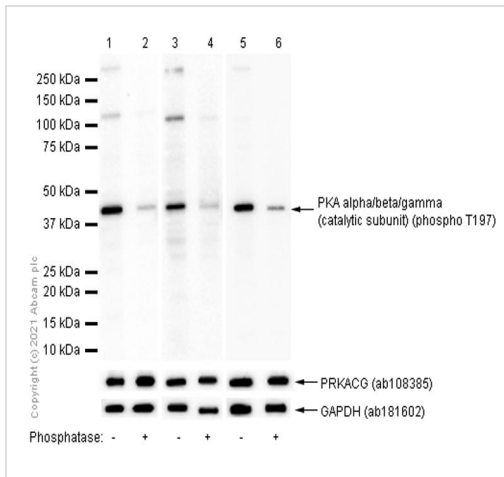
Lane 3 : HeLa (Human cervix adenocarcinoma epithelial cell) starved overnight, then treated with 100nM Calyculin A for 30 minutes whole cell lysate, then the membrane treated with Lambda Phosphatase for 1 hour

Secondary

All lanes : Goat Anti-Rabbit IgG H&L (HRP) ([ab97051](#)) at 1/20000 dilution

Predicted band size: 40 kDa

Observed band size: 40 kDa



Western blot - Anti-PKA alpha/beta/gamma (catalytic subunit) (phospho T197) antibody [EP2606Y] (ab75991)

All lanes : Anti-PKA alpha/beta/gamma (catalytic subunit) (phospho T197) antibody [EP2606Y] (ab75991) at 1/1000 dilution (Purified)

Lane 1 : HeLa (Human cervix adenocarcinoma epithelial cell) whole cell lysate

Lane 2 : HeLa (Human cervix adenocarcinoma epithelial cell) whole cell lysate, then the membrane treated with Lambda Phosphatase for 1 hour

Lane 3 : NIH/3T3 (Mouse embryonic fibroblast) whole cell lysate

Lane 4 : NIH/3T3 (Mouse embryonic fibroblast) whole cell lysate, then the membrane treated with Lambda Phosphatase for 1 hour

Lane 5 : C6 (Rat glial tumor glial cell) whole cell lysate

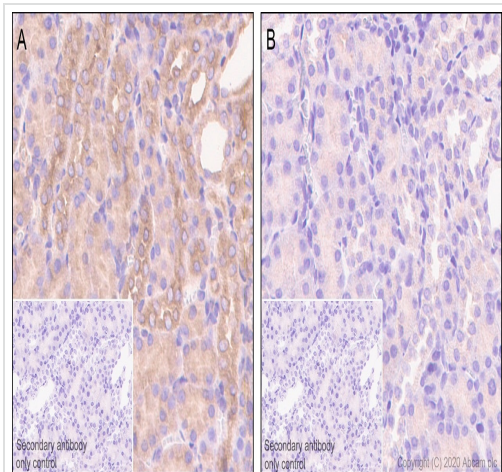
Lane 6 : C6 (Rat glial tumor glial cell) whole cell lysate, then the membrane treated with Lambda Phosphatase for 1 hour

Secondary

All lanes : Goat Anti-Rabbit IgG H&L (HRP) ([ab97051](#)) at 1/20000 dilution

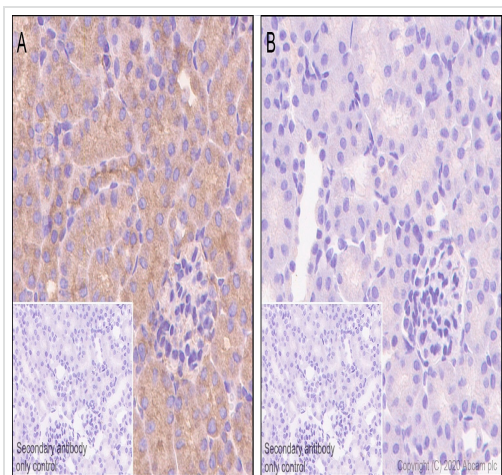
Predicted band size: 40 kDa

Observed band size: 40 kDa



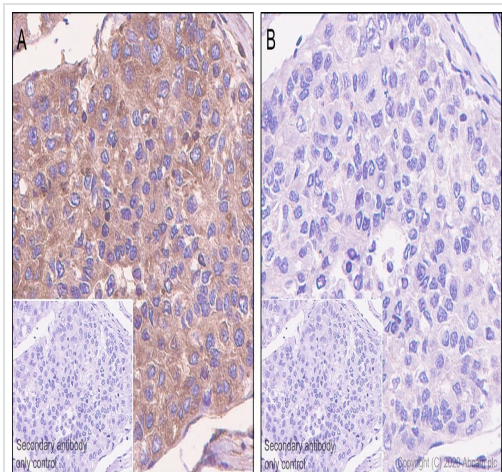
Immunohistochemistry (Formalin/PFA-fixed paraffin-embedded sections) - Anti-PKA alpha/beta/gamma (catalytic subunit) (phospho T197) antibody [EP2606Y] (ab75991)

Immunohistochemistry (Formalin/PFA-fixed paraffin-embedded sections) analysis of rat kidney tissue sections labeling PKA alpha/beta/gamma (catalytic subunit) with Purified ab75991 at 1/5000 dilution (0.05 µg/mL). Heat mediated antigen retrieval was performed using Heat mediated antigen retrieval using Bond™ Epitope Retrieval Solution 2 (pH 9.0) . Tissue was counterstained with Hematoxylin. Rabbit specific IHC polymer detection kit HRP/DAB (**ab209101**) secondary antibody was used at 1/0 dilution. PBS instead of the primary antibody was used as the negative control. M3



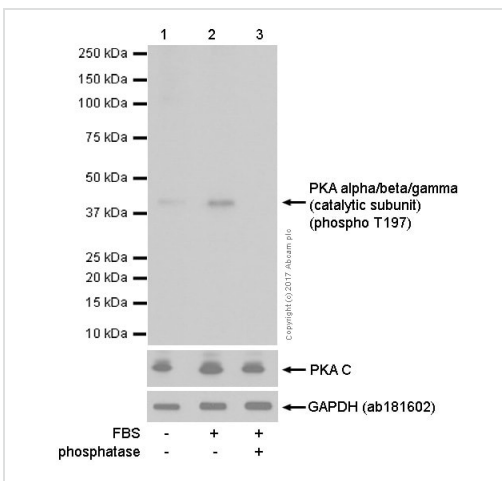
Immunohistochemistry (Formalin/PFA-fixed paraffin-embedded sections) - Anti-PKA alpha/beta/gamma (catalytic subunit) (phospho T197) antibody [EP2606Y] (ab75991)

Immunohistochemistry (Formalin/PFA-fixed paraffin-embedded sections) analysis of mouse kidney tissue sections labeling PKA alpha/beta/gamma (catalytic subunit) with Purified ab75991 at 1/5000 dilution (0.05 µg/mL). Heat mediated antigen retrieval was performed using Heat mediated antigen retrieval using Bond™ Epitope Retrieval Solution 2 (pH 9.0) . Tissue was counterstained with Hematoxylin. Rabbit specific IHC polymer detection kit HRP/DAB (**ab209101**) secondary antibody was used at 1/0 dilution. PBS instead of the primary antibody was used as the negative control. M3



Immunohistochemistry (Formalin/PFA-fixed paraffin-embedded sections) - Anti-PKA alpha/beta/gamma (catalytic subunit) (phospho T197) antibody [EP2606Y] (ab75991)

Immunohistochemistry (Formalin/PFA-fixed paraffin-embedded sections) analysis of human liver carcinoma tissue sections labeling PKA alpha/beta/gamma (catalytic subunit) with Purified ab75991 at 1/5000 dilution (0.05 µg/mL). Heat mediated antigen retrieval was performed using Heat mediated antigen retrieval using Bond™ Epitope Retrieval Solution 2 (pH 9.0) . Tissue was counterstained with Hematoxylin. Rabbit specific IHC polymer detection kit HRP/DAB (**ab209101**) secondary antibody was used at 1/0 dilution. PBS instead of the primary antibody was used as the negative control. M3



Western blot - Anti-PKA alpha/beta/gamma (catalytic subunit) (phospho T197) antibody [EP2606Y] (ab75991)

All lanes : Anti-PKA alpha/beta/gamma (catalytic subunit) (phospho T197) antibody [EP2606Y] (ab75991) at 1/1000 dilution (Unpurified)

Lane 1 : Jurkat (Human T cell leukemia T lymphocyte) 10% FBS all the time. Whole cell lysates

Lane 2 : Jurkat (Human T cell leukemia T lymphocyte) serum starve for 24h then 20% FBS 20h. Whole cell lysates

Lane 3 : Jurkat (Human T cell leukemia T lymphocyte) serum starve for 24h then 20% FBS 20h. Whole cell lysates. Then the membrane was incubated with phosphatase.

Lysates/proteins at 15 µg per lane.

Secondary

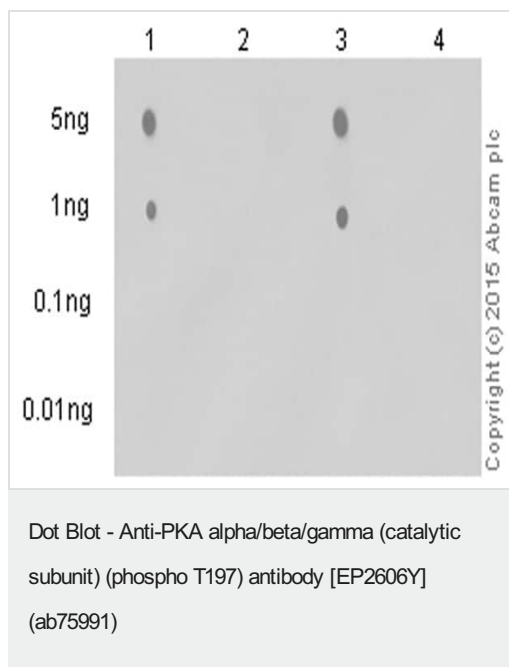
All lanes : Goat Anti-Rabbit IgG H&L (HRP) (**ab97051**) at 1/20000 dilution

Predicted band size: 40 kDa

Observed band size: 40 kDa

Exposure time: 1 second

Blocking and diluting buffer and concentration: 5% NFDM/TBST.



Dot blot analysis of various peptides labelling PKA gamma (catalytic subunit) (phospho T197) with unpurified ab75991 at a dilution of 1/1000. **ab97051**, a peroxidase-conjugated goat anti-rabbit IgG (H+L) was used as the secondary antibody (1/100000).

Lane 1 - PKA alpha/beta/gamma (catalytic subunit) (pT197) phospho peptide.

Lane 2 - PKA alpha/beta/gamma (catalytic subunit) non-phospho peptide.

Lane 3 - PRKX/Y (pT203) phospho peptide.

Lane 4 - PRKX/Y non-phospho peptide.

Blocking and dilution buffer: 5% NFDM/TBST.

Exposure time: 3 minutes.

Why choose a recombinant antibody?

Research with confidence
Consistent and reproducible results

Long-term and scalable supply
Recombinant technology

Success from the first experiment
Confirmed specificity

Ethical standards compliant
Animal-free production

Anti-PKA alpha/beta/gamma (catalytic subunit) (phospho T197) antibody [EP2606Y] (ab75991)

Please note: All products are "FOR RESEARCH USE ONLY. NOT FOR USE IN DIAGNOSTIC PROCEDURES"

Our Abpromise to you: Quality guaranteed and expert technical support

- Replacement or refund for products not performing as stated on the datasheet
- Valid for 12 months from date of delivery
- Response to your inquiry within 24 hours
- We provide support in Chinese, English, French, German, Japanese and Spanish
- Extensive multi-media technical resources to help you
- We investigate all quality concerns to ensure our products perform to the highest standards

If the product does not perform as described on this datasheet, we will offer a refund or replacement. For full details of the Abpromise, please visit <https://www.abcam.co.jp/abpromise> or contact our technical team.

Terms and conditions

- Guarantee only valid for products bought direct from Abcam or one of our authorized distributors