


Anti-PKA alpha + beta (catalytic subunits) (phospho T197) antibody ab59218

2 References [画像数 2](#)

製品の概要

製品名	Anti-PKA alpha + beta (catalytic subunits) (phospho T197) antibody
製品の詳細	Rabbit polyclonal to PKA alpha + beta (catalytic subunits) (phospho T197)
由来種	Rabbit
特異性	ab59218 detects endogenous levels of PKA alpha + beta (catalytic subunit) only when phosphorylated at threonine 197.
アプリケーション	適用あり: IHC-P, WB
種交差性	交差種: Mouse, Human 交差が予測される動物種: Rat 
免疫原	Synthetic peptide corresponding to Human PKA alpha + beta (catalytic subunits) aa 150-250 (phospho T197). (T-W-TP-L-C). Database link: P17612
特記事項	<p>The Life Science industry has been in the grips of a reproducibility crisis for a number of years. Abcam is leading the way in addressing this with our range of recombinant monoclonal antibodies and knockout edited cell lines for gold-standard validation. Please check that this product meets your needs before purchasing.</p> <p>If you have any questions, special requirements or concerns, please send us an inquiry and/or contact our Support team ahead of purchase. Recommended alternatives for this product can be found below, along with publications, customer reviews and Q&As</p>

製品の特性

製品の状態	Liquid
保存方法	Shipped at 4°C. Store at -20°C. Stable for 12 months at -20°C.
バッファー	pH: 7.40 Preservative: 0.02% Sodium azide Constituents: PBS, 50% Glycerol (glycerin, glycerine), 0.87% Sodium chloride
	Without Mg+2 and Ca+2
精製度	Immunogen affinity purified

特記事項(精製)	ab59218 was affinity-purified from rabbit antiserum by affinity-chromatography using epitope-specific phosphopeptide. The antibody against non-phosphopeptide was removed by chromatography using non-phosphopeptide corresponding to the phosphorylation site.
ポリ/モノ	ポリクローナル
アイソタイプ	IgG

アプリケーション

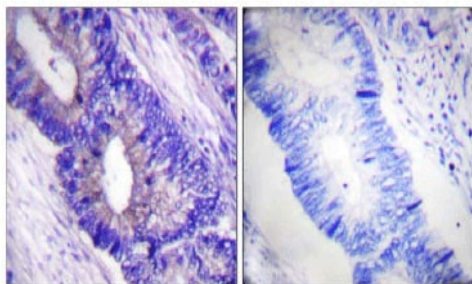
The Abpromise guarantee **Abpromise保証は、**次のテスト済みアプリケーションにおけるab59218の使用に適用されます
アプリケーションノートには、推奨の開始希釈率がありますが、適切な希釈率につきましてはご検討ください。

アプリケーション	Abreviews	特記事項
IHC-P		1/50 - 1/100.
WB		1/500 - 1/1000. Detects a band of approximately 41 kDa (predicted molecular weight: 41 kDa).

ターゲット情報

関連性	PRKACA and PRKACB are members of the Ser/Thr protein kinase family and are a catalytic subunit of cAMP-dependent protein kinase. cAMP is a signaling molecule important for a variety of cellular functions. cAMP exerts its effects by activating the cAMP-dependent protein kinase, which transduces the signal through phosphorylation of different target proteins. The inactive kinase holoenzyme is a tetramer composed of two regulatory and two catalytic subunits. cAMP causes the dissociation of the inactive holoenzyme into a dimer of regulatory subunits bound to four cAMP and two free monomeric catalytic subunits.
細胞内局在	Cytoplasm. Nucleus. Note=Translocates into the nucleus (monomeric catalytic subunit). The inactive holoenzyme is found in the cytoplasm

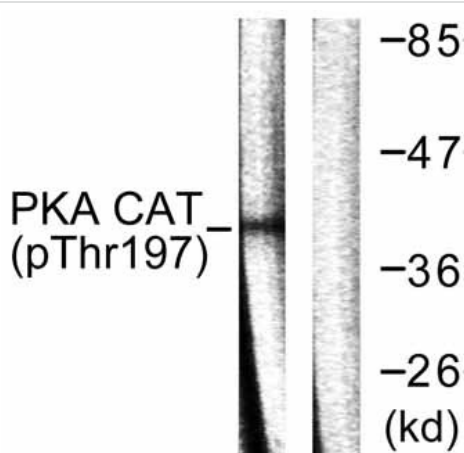
画像



P-peptide - +

Immunohistochemistry (Formalin/PFA-fixed paraffin-embedded sections) - Anti-PKA alpha + beta (catalytic subunits) (phospho T197) antibody (ab59218)

ab59218 at 1/50 dilution staining PKA alpha + beta (catalytic subunit) in human colon carcinoma by Immunohistochemistry, Paraffin embedded tissue, in the absence (left) or presence (right) of the immunising peptide.



Western blot - Anti-PKA alpha + beta (catalytic subunits) (phospho T197) antibody (ab59218)

All lanes : Anti-PKA alpha + beta (catalytic subunits) (phospho T197) antibody (ab59218) at 1/500 dilution

Lane 1 : mouse brain cell extract

Lane 2 : mouse brain cell extract with immunising peptide

Predicted band size: 41 kDa

Observed band size: 41 kDa

Please note: All products are "FOR RESEARCH USE ONLY. NOT FOR USE IN DIAGNOSTIC PROCEDURES"

Our Abpromise to you: Quality guaranteed and expert technical support

- Replacement or refund for products not performing as stated on the datasheet
- Valid for 12 months from date of delivery
- Response to your inquiry within 24 hours
- We provide support in Chinese, English, French, German, Japanese and Spanish
- Extensive multi-media technical resources to help you
- We investigate all quality concerns to ensure our products perform to the highest standards

If the product does not perform as described on this datasheet, we will offer a refund or replacement. For full details of the Abpromise, please visit <https://www.abcam.co.jp/abpromise> or contact our technical team.

Terms and conditions

- Guarantee only valid for products bought direct from Abcam or one of our authorized distributors