

Anti-PIWIL2 antibody ab36764

★★★★★ **1 Abreviews** **17 References** 画像数 1

製品の概要

製品名	Anti-PIWIL2 antibody
製品の詳細	Rabbit polyclonal to PIWIL2
由来種	Rabbit
アプリケーション	適用あり: WB, ICC/IF, IHC-Fr, IP, Flow Cyt, Electron Microscopy
種交差性	交差種: Mouse
免疫原	Synthetic peptide corresponding to Mouse PIWIL2 aa 1-100 (N terminal) conjugated to keyhole limpet haemocyanin. (Peptide available as ab27821 , ab27822)
特記事項	<p>The Life Science industry has been in the grips of a reproducibility crisis for a number of years. Abcam is leading the way in addressing this with our range of recombinant monoclonal antibodies and knockout edited cell lines for gold-standard validation. Please check that this product meets your needs before purchasing.</p> <p>If you have any questions, special requirements or concerns, please send us an inquiry and/or contact our Support team ahead of purchase. Recommended alternatives for this product can be found below, along with publications, customer reviews and Q&As</p>

製品の特性

製品の状態	Liquid
保存方法	Shipped at 4°C. Store at +4°C short term (1-2 weeks). Upon delivery aliquot. Store at -20°C or -80°C. Avoid freeze / thaw cycle.
バッファー	<p>pH: 7.40</p> <p>Preservative: 0.02% Sodium azide</p> <p>Constituent: PBS</p> <p>Batches of this product that have a concentration < 1mg/ml may have BSA added as a stabilising agent. If you would like information about the formulation of a specific lot, please contact our scientific support team who will be happy to help.</p>
精製度	Immunogen affinity purified
ポリ/モノ	ポリクローナル
アイソタイプ	IgG

アプリケーション

The Abpromise guarantee **Abpromise保証は、次のテスト済みアプリケーションにおけるab36764の使用に適用されます**

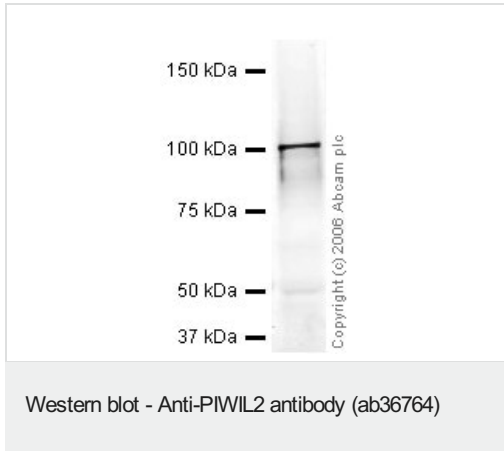
アプリケーションノートには、推奨の開始希釈率がありますが、適切な希釈率につきましてはご検討ください。

アプリケーション	Abreviews	特記事項
WB	★★★★★ (1)	Use a concentration of 1 µg/ml. Detects a band of approximately 100 kDa (predicted molecular weight: 110 kDa).
ICC/IF		Use at an assay dependent concentration. PubMed: 20460113
IHC-Fr		Use at an assay dependent concentration. PubMed: 20534472
IP		Use at an assay dependent concentration. PubMed: 20460113
Flow Cyt		Use at an assay dependent concentration. PubMed: 20460113 ab171870 - Rabbit polyclonal IgG, is suitable for use as an isotype control with this antibody.
Electron Microscopy		Use at an assay dependent concentration. PubMed: 20011505

ターゲット情報

機能	Plays a central role during spermatogenesis by repressing transposable elements and prevent their mobilization, which is essential for the germline integrity. Plays an essential role in meiotic differentiation of spermatocytes, germ cell differentiation and in self-renewal of spermatogonial stem cells. Its presence in oocytes suggests that it may participate to similar functions during oogenesis in females. Acts via the piRNA metabolic process, which mediates the repression of transposable elements during meiosis by forming complexes composed of piRNAs and Piwi proteins and govern the methylation and subsequent repression of transposons. Directly binds piRNAs, a class of 24 to 30 nucleotide RNAs that are generated by a Dicer-independent mechanism and are primarily derived from transposons and other repeated sequence elements. Associates with primary piRNAs in the cytoplasm and is required for PMWL4/MIWI2 nuclear localization and association with secondary piRNAs antisense. The piRNA process acts upstream of known mediators of DNA methylation. Participates to a piRNA amplification loop. Besides their function in transposable elements repression, piRNAs are probably involved in other processes during meiosis such as translation regulation. Indirectly modulate expression of genes such as PDGFRB, SLC2A1, ITGA6, GJA7, THY1, CD9 and STRA8. Inhibits tumor cell growth when repressed. When overexpressed, acts as an oncogene by inhibition of apoptosis and promotion of proliferation in tumors.
組織特異性	Expressed in adult testis and in most tumors.
配列類似性	Belongs to the argonaute family. Piwi subfamily. Contains 1 PAZ domain. Contains 1 Piwi domain.
翻訳後修飾	Arginine methylation by PRMT5 is required for the interaction with Tudor domain-containing protein TDRD1 and subsequent localization to the meiotic nuage, also named P granule.
細胞内局在	Cytoplasm. Present in chromatoid body. Probable component of the meiotic nuage, also named

画像



Anti-PIWIL2 antibody (ab36764) at 1 µg/ml + Mouse Testis Whole
Tissue Lysate at 20 µg

Secondary

Goat polyclonal to Rabbit IgG (Alexa Fluor® 680) at 1/10000
dilution

Performed under reducing conditions.

Predicted band size: 110 kDa

Observed band size: 100 kDa

Please note: All products are "FOR RESEARCH USE ONLY. NOT FOR USE IN DIAGNOSTIC PROCEDURES"

Our Abpromise to you: Quality guaranteed and expert technical support

- Replacement or refund for products not performing as stated on the datasheet
- Valid for 12 months from date of delivery
- Response to your inquiry within 24 hours
- We provide support in Chinese, English, French, German, Japanese and Spanish
- Extensive multi-media technical resources to help you
- We investigate all quality concerns to ensure our products perform to the highest standards

If the product does not perform as described on this datasheet, we will offer a refund or replacement. For full details of the Abpromise, please visit <https://www.abcam.co.jp/abpromise> or contact our technical team.

Terms and conditions

- Guarantee only valid for products bought direct from Abcam or one of our authorized distributors