

# Anti-PITX1/BFT antibody ab70273

**9 References** [画像数 2](#)

### 製品の概要

---

製品名	Anti-PITX1/BFT antibody
製品の詳細	Rabbit polyclonal to PITX1/BFT
由来種	Rabbit
アプリケーション	<b>適用あり:</b> WB, IP
種交差性	<b>交差種:</b> Human <b>交差が予測される動物種:</b> Cow, Chimpanzee, Gorilla, Orangutan, Elephant 
免疫原	Synthetic peptide corresponding to Human PITX1/BFT (N terminal). Database link: <a href="#">NP_002644.3</a>
ポジティブ・コントロール	HeLa whole cell lysate ( <a href="#">ab150035</a> )
特記事項	<p>The Life Science industry has been in the grips of a reproducibility crisis for a number of years. Abcam is leading the way in addressing this with our range of recombinant monoclonal antibodies and knockout edited cell lines for gold-standard validation. Please check that this product meets your needs before purchasing.</p> <p>If you have any questions, special requirements or concerns, please send us an inquiry and/or contact our Support team ahead of purchase. Recommended alternatives for this product can be found below, along with publications, customer reviews and Q&amp;As</p>

### 製品の特性

---

製品の状態	Liquid
保存方法	Shipped at 4°C. Upon delivery aliquot and store at -20°C. Avoid freeze / thaw cycles.
バッファー	pH: 7 Preservative: 0.09% Sodium azide Constituents: 1.815% Tris, 1.764% Sodium citrate, 0.021% PBS
精製度	Immunogen affinity purified
ポリ/モノ	ポリクローナル
アイソタイプ	IgG

### アプリケーション

---

## The Abpromise guarantee

**Abpromise保証は、次のテスト済みアプリケーションにおけるab70273の使用に適用されます**

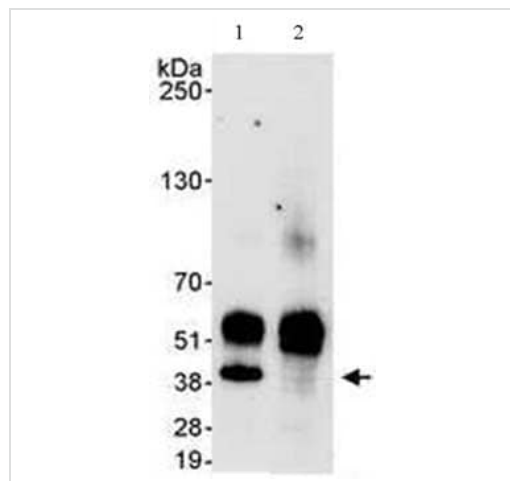
アプリケーションノートには、推奨の開始希釈率がありますが、適切な希釈率につきましてはご検討ください。

アプリケーション	Abreviews	特記事項
WB		1/2500 - 1/10000. Detects a band of approximately 40 kDa (predicted molecular weight: 34 kDa).
IP		Use at 1-4 µg/mg of lysate.

## ターゲット情報

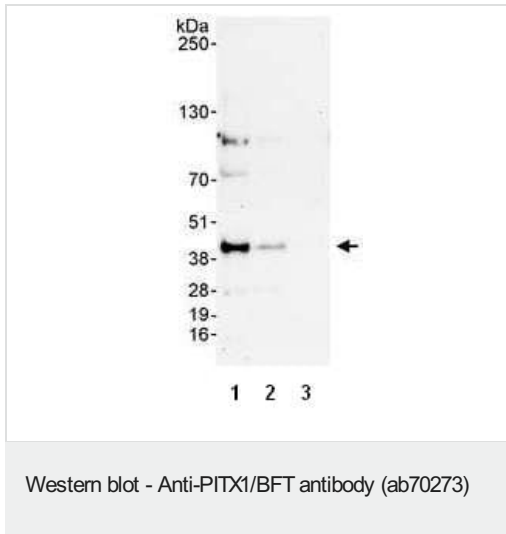
機能	May play a role in the development of anterior structures, and in particular, the brain and facies and in specifying the identity or structure of hindlimb.
関連疾患	Defects in PITX1 are a cause of congenital clubfoot (CCF) [MIM:119800]; also known as talipes equinovarus (TEV). Clubfoot is a congenital limb deformity defined as fixation of the foot in cavus, adductus, varus, and equinus (i.e. inclined inwards, axially rotated outwards, and pointing downwards) with concomitant soft tissue abnormalities. Clubfoot may occur in isolation or as part of a syndrome. Clubfoot appears to be a multifactorial trait.
配列類似性	Belongs to the paired homeobox family. Bicoid subfamily. Contains 1 homeobox DNA-binding domain.
細胞内局在	Nucleus.

## 画像



Immunoprecipitation - Anti-PITX1/BFT antibody  
(ab70273)

HeLa whole cell lysate (1 mg) was immunoprecipitated using ab70273 at 3 µg/mg lysate (lane 1) or an IgG control (lane 2). One quarter of the total IP reaction was loaded on to a gel and analysed by Western blot using ab70273 at 1 µg/ml. Bands were detected using chemiluminescence with an exposure time of 30 seconds.



**All lanes** : Anti-PITX1/BFT antibody (ab70273) at 0.1 µg/ml

**Lane 1** : HeLa whole cell lysate at 50 µg

**Lane 2** : HeLa whole cell lysate at 15 µg

**Lane 3** : HeLa whole cell lysate at 5 µg

**Predicted band size:** 34 kDa

**Observed band size:** 40 kDa

**Exposure time:** 3 minutes

**Please note:** All products are "FOR RESEARCH USE ONLY. NOT FOR USE IN DIAGNOSTIC PROCEDURES"

### Our Abpromise to you: Quality guaranteed and expert technical support

- Replacement or refund for products not performing as stated on the datasheet
- Valid for 12 months from date of delivery
- Response to your inquiry within 24 hours
- We provide support in Chinese, English, French, German, Japanese and Spanish
- Extensive multi-media technical resources to help you
- We investigate all quality concerns to ensure our products perform to the highest standards

If the product does not perform as described on this datasheet, we will offer a refund or replacement. For full details of the Abpromise, please visit <https://www.abcam.co.jp/abpromise> or contact our technical team.

### Terms and conditions

- Guarantee only valid for products bought direct from Abcam or one of our authorized distributors