


### Anti-PITRM1 antibody ab111681

面格新 2

医薬用外劇物

#### 製品の概要

製品名	Anti-PITRM1 antibody
製品の詳細	Rabbit polyclonal to PITRM1
由来種	Rabbit
アプリケーション	<b>適用あり:</b> WB, IHC-P, ICC/IF
種交差性	<b>交差種:</b> Human <b>交差が予測される動物種:</b> Mouse 
免疫原	Recombinant fragment, corresponding to a region within amino acids 1-188 of Human PITRM1 (AAH01150).
ポジティブ・コントロール	A549, HeLa, HepG2 and HCT116 cells and whole cell lysates; PC13 xenograft tissue.
特記事項	<p>The Life Science industry has been in the grips of a reproducibility crisis for a number of years. Abcam is leading the way in addressing this with our range of recombinant monoclonal antibodies and knockout edited cell lines for gold-standard validation. Please check that this product meets your needs before purchasing.</p> <p>If you have any questions, special requirements or concerns, please send us an inquiry and/or contact our Support team ahead of purchase. Recommended alternatives for this product can be found below, along with publications, customer reviews and Q&amp;As</p>

#### 製品の特性

製品の状態	Liquid
保存方法	Shipped at 4°C. Upon delivery aliquot and store at -20°C or -80°C. Avoid repeated freeze / thaw cycles.
バッファー	<p>pH: 7.00</p> <p>Preservative: 0.01% Thimerosal (merthiolate)</p> <p>Constituents: 1.21% Tris, 0.75% Glycine, 20% Glycerol (glycerin, glycerine)</p>
精製度	Immunogen affinity purified
特記事項(精製)	ab111681 is purified by antigen-affinity chromatography.
ポリ/モノ	ポリクローナル
アイソタイプ	IgG

## アプリケーション

### The Abpromise guarantee

**Abpromise保証は、**次のテスト済みアプリケーションにおけるab111681の使用に適用されます

アプリケーションノートには、推奨の開始希釈率がありますが、適切な希釈率につきましてはご確認ください。

アプリケーション	Abreviews	特記事項
WB		1/500 - 1/3000. Predicted molecular weight: 117 kDa.
IHC-P		1/100 - 1/500. Perform heat mediated antigen retrieval with citrate buffer pH 6 before commencing with IHC staining protocol.
ICC/IF		1/100 - 1/500.

## ターゲット情報

### 機能

ATP-independent protease that degrades mitochondrial transit peptides after their cleavage. Also degrades other unstructured peptides. Specific for peptides in the range of 10 to 65 residues. Able to degrade amyloid beta A4 (APP) protein when it accumulates in mitochondrion, suggesting a link with Alzheimer disease. Shows a preference for cleavage after small polar residues and before basic residues, but without any positional preference.

### 組織特異性

Widely expressed. Expressed at higher level in muscle and heart compared to brain, pancreas, liver, lung and placenta.

### 配列類似性

Belongs to the peptidase M16 family. PreP subfamily.

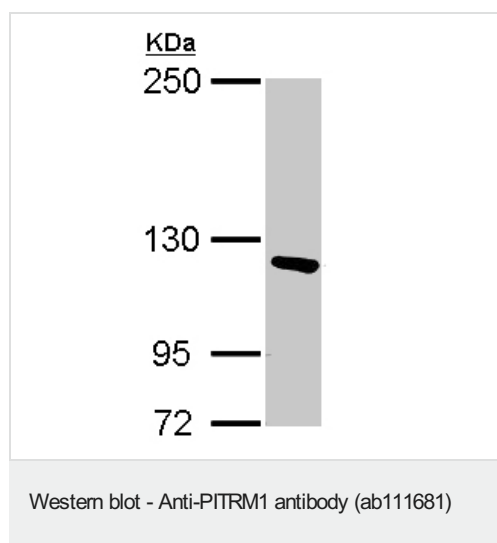
### 翻訳後修飾

The disulfide bond may lock the enzyme in a closed conformation under oxidized conditions, suggesting that it may participate in redox regulation of the enzyme.

### 細胞内局在

Mitochondrion matrix.

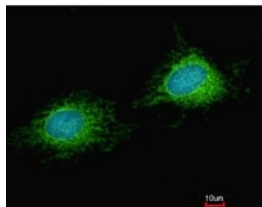
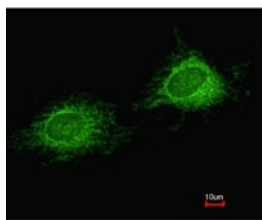
## 画像



Anti-PITRM1 antibody (ab111681) at 1/1000 dilution + A549 whole cell lysate at 30 µg

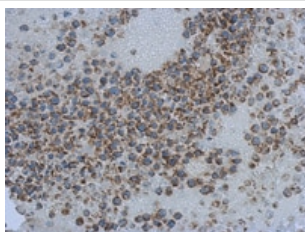
**Predicted band size:** 117 kDa

5% SDS-PAGE.



ab111681 at 1/200 dilution staining PITRM1 in methanol-fixed HeLa cells by Immunofluorescence. Lower image shows cells co-stained with Hoechst 33342.

Immunocytochemistry/ Immunofluorescence - Anti-PITRM1 antibody (ab111681)



ab111681 at 1/500 dilution staining PITRM1 in paraffin-embedded PC13 xenograft tissue by Immunohistochemistry.

Immunohistochemistry (Formalin/PFA-fixed paraffin-embedded sections) - Anti-PITRM1 antibody (ab111681)

**Please note:** All products are "FOR RESEARCH USE ONLY. NOT FOR USE IN DIAGNOSTIC PROCEDURES"

### Our Abpromise to you: Quality guaranteed and expert technical support

- Replacement or refund for products not performing as stated on the datasheet
- Valid for 12 months from date of delivery
- Response to your inquiry within 24 hours
- We provide support in Chinese, English, French, German, Japanese and Spanish
- Extensive multi-media technical resources to help you
- We investigate all quality concerns to ensure our products perform to the highest standards

If the product does not perform as described on this datasheet, we will offer a refund or replacement. For full details of the Abpromise, please visit <https://www.abcam.co.jp/abpromise> or contact our technical team.

### Terms and conditions

- Guarantee only valid for products bought direct from Abcam or one of our authorized distributors