




Anti-Pit1 antibody [5E4] ab10545

★★★★★ [1 Abreviews](#) [3 References](#) [画像数 3](#)

製品の概要

製品名	Anti-Pit1 antibody [5E4]
製品の詳細	Mouse monoclonal [5E4] to Pit1
由来種	Mouse
アプリケーション	適用あり: WB, ICC/IF, IP
種交差性	交差種: Rat 交差が予測される動物種: Sheep, Cow, Human, Pig, Macaque monkey 
免疫原	Recombinant fragment: SAAECLPASN HATNVMSTAT GLHYSVPSCH YGNQPSTYGV MAGSLTPCLY KFPDHTLSHG FPPLHQPLLA EDPAASEFKQ ELRRKSKLVEE PIDMDSPEIR ELEQFANEFK VRRIKL , corresponding to amino acids 30-146 of Rat Pit1.  Run BLAST with  Run BLAST with
特記事項	<p>The Life Science industry has been in the grips of a reproducibility crisis for a number of years. Abcam is leading the way in addressing this with our range of recombinant monoclonal antibodies and knockout edited cell lines for gold-standard validation. Please check that this product meets your needs before purchasing.</p> <p>If you have any questions, special requirements or concerns, please send us an inquiry and/or contact our Support team ahead of purchase. Recommended alternatives for this product can be found below, along with publications, customer reviews and Q&As</p>

製品の特性

製品の状態	Liquid
保存方法	Shipped at 4°C. Upon delivery aliquot and store at -20°C or -80°C. Avoid repeated freeze / thaw cycles.
精製度	Tissue culture supernatant
ポリ/モノ	モノクローナル
クローン名	5E4
ミエローマ	NS1

アイソタイプ	IgG2a
軽鎖の種類	kappa

アプリケーション

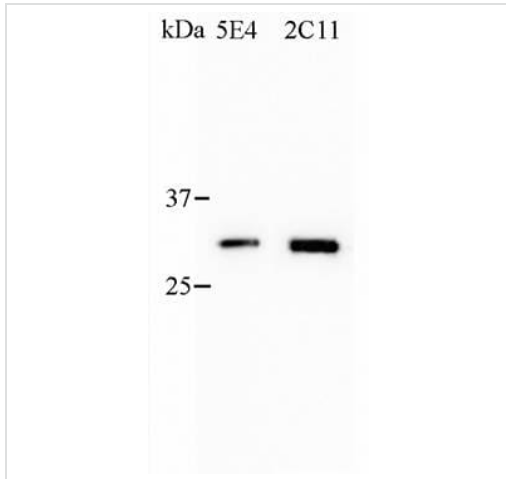
The Abpromise guarantee Abpromise保証は、 次のテスト済みアプリケーションにおけるab10545の使用に適用されます
アプリケーションノートには、推奨の開始希釈率がありますが、適切な希釈率につきましてはご確認ください。

アプリケーション	Abreviews	特記事項
WB		1/40. Detects a band of approximately 31 kDa (predicted molecular weight: 33 kDa).
ICC/IF		Use at an assay dependent concentration.
IP		Use at an assay dependent concentration.

ターゲット情報

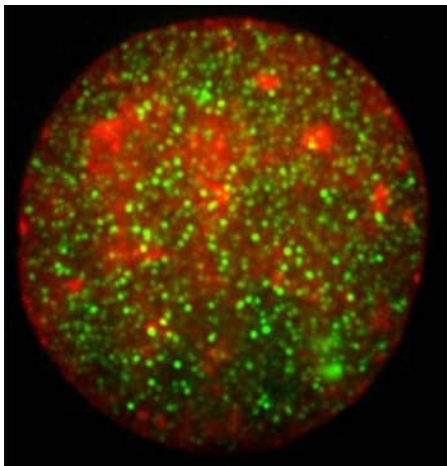
機能	Transcription factor involved in the specification of the lactotrope, somatotrope, and thyrotrope phenotypes in the developing anterior pituitary. Activates growth hormone and prolactin genes. Specifically binds to the consensus sequence 5'-TAAAT-3'.
関連疾患	Defects in POU1F1 are the cause of pituitary hormone deficiency combined type 1 (CPHD1) [MIM:613038]. CPHD is characterized by impaired production of growth hormone (GH) and one or more of the other five anterior pituitary hormones.
配列類似性	Belongs to the POU transcription factor family. Class-1 subfamily. Contains 1 homeobox DNA-binding domain. Contains 1 POU-specific domain.
細胞内局在	Nucleus.

画像



Western blot - Anti-Pit1 antibody [5E4] (ab10545)

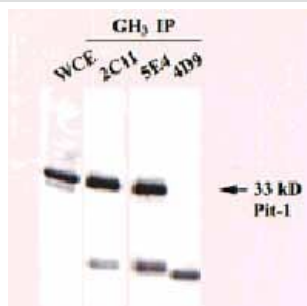
At 1:40 dilution the western was very good on GH3 nuclear lysate which has an abundant expression of Pit1. At 1:40 dilution the western was very good on GH3 nuclear lysate which has an abundant expression of Pit1.



Immunocytochemistry/ Immunofluorescence - Anti-Pit1 antibody [5E4] (ab10545)

This image is courtesy of Zelton Dave Sharp

IF staining on rat samples using ab10545 carried out as per the reference (see below) by Zelton Dave Sharp of The University of Texas, San Antonio.



Immunoprecipitation - Anti-Pit1 antibody [5E4] (ab10545)

Antibody to Pit1 (ab10545) detects a 33 kDa band in IP followed by WB.

Two IgG monoclonal antibodies were used to immunoprecipitate pituitary-derived GH3 cellular proteins, and followed by Western analysis. Whole cell extracts (WCE) and immunoprecipitated fractions contain a prominent 33 kD band representing Pit-1. Nonspecific hybridoma supernatant was used as a negative control. Epitope mapping (data not shown) indicated that both IgG monoclonal antibodies recognize an epitope in the distal N-terminus within the ST activation domain of Pit-1

Our Abpromise to you: Quality guaranteed and expert technical support

- Replacement or refund for products not performing as stated on the datasheet
- Valid for 12 months from date of delivery
- Response to your inquiry within 24 hours

- We provide support in Chinese, English, French, German, Japanese and Spanish
- Extensive multi-media technical resources to help you
- We investigate all quality concerns to ensure our products perform to the highest standards

If the product does not perform as described on this datasheet, we will offer a refund or replacement. For full details of the Abpromise, please visit <https://www.abcam.co.jp/abpromise> or contact our technical team.

Terms and conditions

- Guarantee only valid for products bought direct from Abcam or one of our authorized distributors