

Anti-PINCH 1 + PINCH 2 antibody [EP1943Y] ab76112

リコンビナント RabMAb

1 References [画像数 3](#)

製品の概要

製品名	Anti-PINCH 1 + PINCH 2 antibody [EP1943Y]
製品の詳細	Rabbit monoclonal [EP1943Y] to PINCH 1 + PINCH 2
由来種	Rabbit
特異性	The immunogen used for this product shares 73% homology with PINCH 2. Cross-reactivity with this protein has not been confirmed experimentally.
アプリケーション	適用あり: WB
種交差性	交差種: Mouse, Rat, Human
免疫原	Synthetic peptide. This information is proprietary to Abcam and/or its suppliers.
ポジティブ・コントロール	WB: His-tagged Human full length recombinant LIMS1 and LIMS2 proteins, HeLa, Jurkat, HEK-293, and Mouse and Rat kidney lysate.
特記事項	<p>This product has switched from a hybridoma to recombinant production method on 7th September 2023.</p> <p>This product is a recombinant monoclonal antibody, which offers several advantages including:</p> <ul style="list-style-type: none">- High batch-to-batch consistency and reproducibility- Improved sensitivity and specificity- Long-term security of supply- Animal-free production <p>For more information see here.</p> <p>Our RabMAb[®] technology is a patented hybridoma-based technology for making rabbit monoclonal antibodies. For details on our patents, please refer to RabMAb[®] patents.</p>

製品の特性

製品の状態	Liquid
保存方法	Shipped at 4°C. Upon delivery aliquot and store at -20°C. Avoid freeze / thaw cycles.
バッファー	pH: 7.20 Preservative: 0.01% Sodium azide Constituents: 0.05% BSA, 40% Glycerol (glycerin, glycerine), 59% PBS
精製度	Protein A purified

ポリ/モノ モノクローナル
クローン名 EP1943Y
アイソタイプ IgG

アプリケーション

The Abpromise guarantee **Abpromise保証は、次のテスト済みアプリケーションにおけるab76112の使用に適用されず**
アプリケーションノートには、推奨の開始希釈率がありますが、適切な希釈率につきましてはご検討ください。

アプリケーション	Abreviews	特記事項
WB		1/1000 - 1/5000.

ターゲット情報

細胞内局在 PINCH 1: Cell junction > focal adhesion. Cell membrane. PINCH-2: Nucleus. Cell junction > focal adhesion. Cell membrane.

画像



Western blot - Anti-PINCH 1 + PINCH 2 antibody
[EP1943Y] (ab76112)

All lanes : Anti-PINCH 1 + PINCH 2 antibody [EP1943Y]
(ab76112) at 1/5000 dilution

Lane 1 : HeLa (Human cervix adenocarcinoma epithelial cell)
whole lysate

Lane 2 : Mouse kidney lysate

Lysates/proteins at 15 µg per lane.

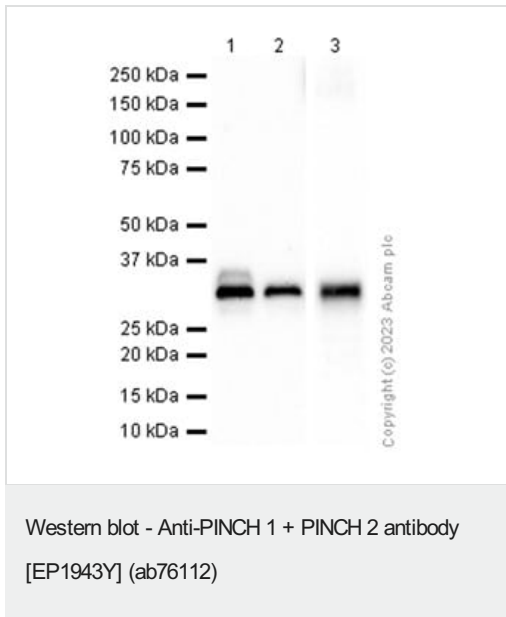
Secondary

All lanes : Goat Anti-Rabbit IgG H&L (HRP) (**ab97051**) at 1/20000
dilution

Performed under reducing conditions.

Observed band size: 34 kDa

Blocking and diluting buffer and concentration: 5% NFDM/TBST.



All lanes : Anti-PINCH 1 + PINCH 2 antibody [EP1943Y] (ab76112) at 1/1000 dilution

Lane 1 : Jurkat (Human T cell leukemia T lymphocyte) whole lysate

Lane 2 : HEK-293 (Human embryonic kidney epithelial cell) whole lysate

Lane 3 : Rat kidney lysate

Lysates/proteins at 20 µg per lane.

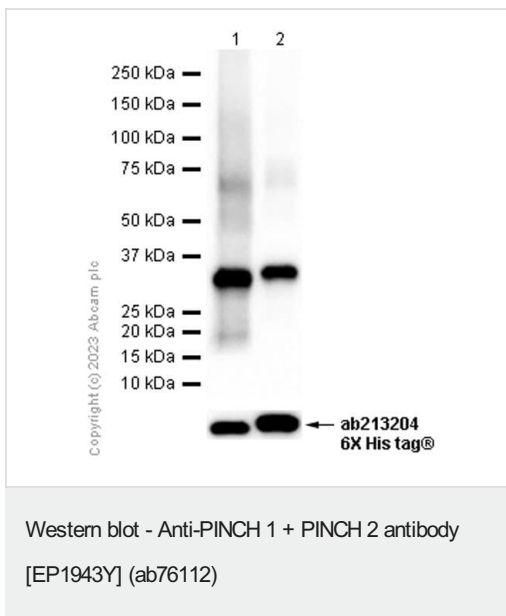
Secondary

All lanes : Goat Anti-Rabbit IgG H&L (HRP) ([ab97051](#)) at 1/20000 dilution

Performed under reducing conditions.

Observed band size: 34 kDa

Blocking and diluting buffer and concentration: 5% NFDm/TBST.



All lanes : Anti-PINCH 1 + PINCH 2 antibody [EP1943Y] (ab76112) at 1/1000 dilution

Lane 1 : His-tagged Human full length recombinant LIMS1 protein, 20 ng

Lane 2 : His-tagged Human full length recombinant LIMS2 protein, 20 ng

Secondary

All lanes : Goat Anti-Rabbit IgG H&L (HRP) ([ab97051](#)) at 1/20000 dilution

Observed band size: 34 and 37 kDa

Exposure time: 3 seconds

Blocking buffer and concentration: 5% NFDm/TBST.

Diluting buffer and concentration: 5% NFDm/TBST.

Please note: All products are "FOR RESEARCH USE ONLY. NOT FOR USE IN DIAGNOSTIC PROCEDURES"

Our Abpromise to you: Quality guaranteed and expert technical support

- Replacement or refund for products not performing as stated on the datasheet
- Valid for 12 months from date of delivery
- Response to your inquiry within 24 hours
- We provide support in Chinese, English, French, German, Japanese and Spanish
- Extensive multi-media technical resources to help you
- We investigate all quality concerns to ensure our products perform to the highest standards

If the product does not perform as described on this datasheet, we will offer a refund or replacement. For full details of the Abpromise, please visit <https://www.abcam.co.jp/abpromise> or contact our technical team.

Terms and conditions

- Guarantee only valid for products bought direct from Abcam or one of our authorized distributors