


### Anti-PIN4 antibody [EPR10033] ab155283

リコンビナント **RabMAb**

**3 References**   **画像数 5**

#### 製品の概要

製品名	Anti-PIN4 antibody [EPR10033]
製品の詳細	Rabbit monoclonal [EPR10033] to PIN4
由来種	Rabbit
アプリケーション	<b>適用あり:</b> WB, IHC-P, ICC/IF <b>適用なし:</b> Flow Cyt
種交差性	<b>交差種:</b> Mouse, Human <b>交差が予測される動物種:</b> Rat 
免疫原	Synthetic peptide within Human PIN4. The exact sequence is proprietary. Database link: <a href="#">Q9Y237</a>
ポジティブ・コントロール	293T, Human skeletal muscle, Human fetal liver, Mouse liver, HepG2 and RAW264.7 cell lysates; Human breast and tonsil tissues. ICC/IF: HepG2 cells
特記事項	This product is a recombinant monoclonal antibody, which offers several advantages including: <ul style="list-style-type: none"> <li>- High batch-to-batch consistency and reproducibility</li> <li>- Improved sensitivity and specificity</li> <li>- Long-term security of supply</li> <li>- Animal-free production</li> </ul> For more information <a href="#">see here</a> . Our RabMAb <sup>®</sup> technology is a patented hybridoma-based technology for making rabbit monoclonal antibodies. For details on our patents, please refer to <a href="#">RabMAb<sup>®</sup> patents</a> .

#### 製品の特性

製品の状態	Liquid
保存方法	Shipped at 4°C. Store at -20°C.
バッファー	pH: 7.2 Preservative: 0.01% Sodium azide Constituents: 9% PBS, 40% Glycerol (glycerin, glycerine), 0.05% BSA, 50% Tissue culture supernatant
精製度	Protein A purified
ポリ/モノ	モノクローナル

クローン名	EPR10033
アイソタイプ	IgG

## アプリケーション

**The Abpromise guarantee**      Abpromise保証は、次のテスト済みアプリケーションにおけるab155283の使用に適用されます  
 アプリケーションノートには、推奨の開始希釈率がありますが、適切な希釈率につきましてはご確認ください。

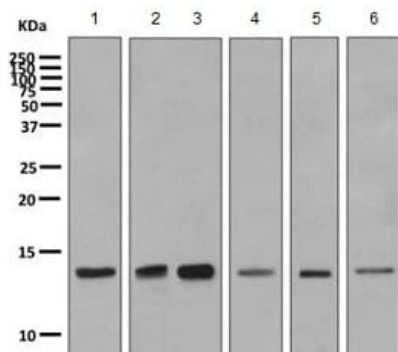
アプリケーション	Abreviews	特記事項
WB		1/1000 - 1/10000. Predicted molecular weight: 13 kDa.
IHC-P		1/250 - 1/500. Perform heat mediated antigen retrieval before commencing with IHC staining protocol.
ICC/IF		1/150.

**追加情報**      Is unsuitable for Flow Cyt.

## ターゲット情報

<b>機能</b>	Isoform 1 is involved as a ribosomal RNA processing factor in ribosome biogenesis. Binds to tightly bent AT-rich stretches of double-stranded DNA. Isoform 2 binds to double-stranded DNA.
<b>組織特異性</b>	Isoform 2 is much more stable than isoform 1 (at protein level). Ubiquitous. Isoform 1 and isoform 2 are expressed in kidney, liver, blood vessel, brain, mammary gland, skeletal muscle, small intestine and submandibularis. Isoform 1 transcripts are much more abundant than isoform 2 in each tissue analyzed.
<b>配列類似性</b>	Belongs to the ppiC/parvulin rotamase family. PIN4 subfamily. Contains 1 PpiC domain.
<b>ドメイン</b>	The PPlase domain enhances mitochondrial targeting.
<b>翻訳後修飾</b>	Phosphorylated. Isoform 1 phosphorylation occurs both in the nucleus and the cytoplasm. Isoform 1 phosphorylation at Ser-19 does not affect its PPlase activity but is required for nuclear localization, and the dephosphorylation is a prerequisite for the binding to DNA. The unphosphorylated isoform 1 associates with the pre-rRNP complexes in the nucleus. Isoform 2 is sumoylated by SUMO2 and SUMO3.
<b>細胞内局在</b>	Mitochondrion. Mitochondrion matrix. Imported in a time- and membrane potential-dependent manner to the mitochondrial matrix, but without concomitant processing of the protein. Directed to mitochondria by a novel N-terminal domain that functions as non-cleavable mitochondrial targeting peptide and Nucleus > nucleolus. Cytoplasm > cytoskeleton > spindle. Cytoplasm. Colocalizes in the nucleolus during interphase and on the spindle apparatus during mitosis with NPM1.

## 画像



Western blot - Anti-PIN4 antibody [EPR10033] (ab155283)

**All lanes :** Anti-PIN4 antibody [EPR10033] (ab155283) at 1/1000 dilution

**Lane 1 :** 293T lysate

**Lane 2 :** Human skeletal muscle lysate

**Lane 3 :** Human fetal liver lysate

**Lane 4 :** Mouse liver lysate

**Lane 5 :** HepG2 lysate

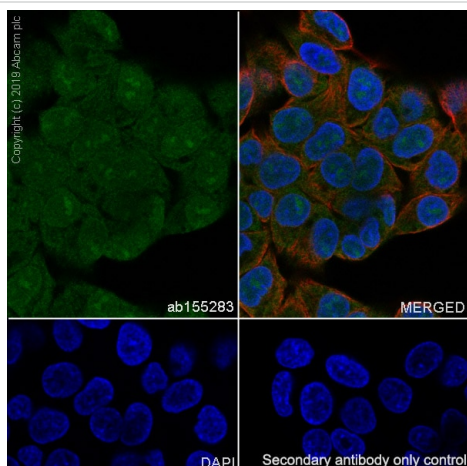
**Lane 6 :** RAW264.7 lysate

Lysates/proteins at 10 µg per lane.

### Secondary

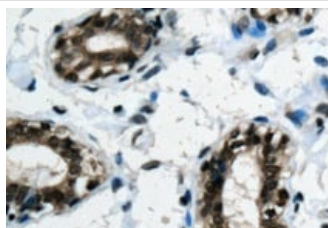
**All lanes :** Goat anti-rabbit HRP at 1/2000 dilution

**Predicted band size:** 13 kDa



Immunocytochemistry/ Immunofluorescence - Anti-PIN4 antibody [EPR10033] (ab155283)

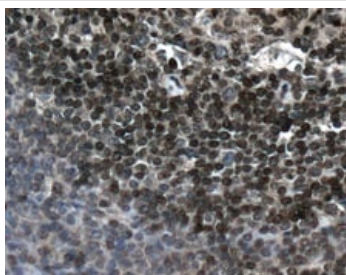
Immunocytochemistry/ Immunofluorescence analysis of HepG2 (human hepatocellular carcinoma epithelial cell) cells labeling PIN4 with purified ab155283 at 1/150 dilution (10 µg/mL). Cells were fixed in 4% Paraformaldehyde and permeabilized with 0.1% tritonX-100. Cells were counterstained with **ab195889** Anti-alpha Tubulin antibody [DM1A] - Microtubule Marker (Alexa Fluor® 594) 1/200 (2.5 µg/mL). Goat anti rabbit IgG (Alexa Fluor® 488, **ab150077**) was used as the secondary antibody at 1/1000 (2 µg/mL) dilution. DAPI (blue) was used as nuclear counterstain. **ab195889** Anti-alpha Tubulin antibody [DM1A] - Microtubule Marker (Alexa Fluor® 594) 1/200 (2.5 µg/mL) was used as the secondary antibody only control.



Immunohistochemistry (Formalin/PFA-fixed paraffin-embedded sections) - Anti-PIN4 antibody [EPR10033] (ab155283)

Immunohistochemical analysis of paraffin embedded Human breast tissue, labeling PIN4 with ab155283 at a 1/250 dilution.

Perform heat mediated antigen retrieval before commencing with IHC staining protocol.



Immunohistochemical analysis of paraffin-embedded Human tonsil tissue, labeling PIN4 with ab155283 at 1/250 dilution.

Perform heat mediated antigen retrieval before commencing with IHC staining protocol.

Immunohistochemistry (Formalin/PFA-fixed paraffin-embedded sections) - Anti-PIN4 antibody [EPR10033] (ab155283)

Why choose a recombinant antibody?



**Research with confidence**  
Consistent and reproducible results



**Long-term and scalable supply**  
Recombinant technology



**Success from the first experiment**  
Confirmed specificity



**Ethical standards compliant**  
Animal-free production

Anti-PIN4 antibody [EPR10033] (ab155283)

**Please note:** All products are "FOR RESEARCH USE ONLY. NOT FOR USE IN DIAGNOSTIC PROCEDURES"

## Our Abpromise to you: Quality guaranteed and expert technical support

- Replacement or refund for products not performing as stated on the datasheet
- Valid for 12 months from date of delivery
- Response to your inquiry within 24 hours
- We provide support in Chinese, English, French, German, Japanese and Spanish
- Extensive multi-media technical resources to help you
- We investigate all quality concerns to ensure our products perform to the highest standards

If the product does not perform as described on this datasheet, we will offer a refund or replacement. For full details of the Abpromise, please visit <https://www.abcam.co.jp/abpromise> or contact our technical team.

## Terms and conditions

- Guarantee only valid for products bought direct from Abcam or one of our authorized distributors