

Anti-Pin1 antibody [EP1479Y] ab76309

リコンビナント RabMAb

★★★★★ [5 Abreviews](#) [7 References](#) [画像数 3](#)

製品の概要

製品名	Anti-Pin1 antibody [EP1479Y]
製品の詳細	Rabbit monoclonal [EP1479Y] to Pin1
由来種	Rabbit
アプリケーション	適用あり: WB 適用なし: Flow Cyt, ICC/IF, IHC-P or IP
種交差性	交差種: Mouse, Rat, Human
免疫原	Synthetic peptide. This information is proprietary to Abcam and/or its suppliers.
ポジティブ・コントロール	WB: HeLa, HEK-293, Mouse brain and Rat brain lysates
特記事項	Our RabMAb [®] technology is a patented hybridoma-based technology for making rabbit monoclonal antibodies. For details on our patents, please refer to RabMAb[®] patents .

製品の特性

製品の状態	Liquid
保存方法	Shipped at 4°C. Upon delivery aliquot and store at -20°C. Avoid freeze / thaw cycles.
バッファー	pH: 7.20 Preservative: 0.01% Sodium azide Constituents: 59% PBS, 40% Glycerol (glycerin, glycerine), 0.05% BSA
精製度	Protein A purified
ポリ/モノ	モノクローナル
クローン名	EP1479Y
アイソタイプ	IgG

アプリケーション

The Abpromise guarantee Abpromise保証は、次のテスト済みアプリケーションにおけるab76309の使用に適用されます
アプリケーションノートには、推奨の開始希釈率がありますが、適切な希釈率につきましてはご検討ください。

アプリケーション	Abreviews	特記事項
WB	★★★★★ (4)	1/1000. Detects a band of approximately 18 kDa (predicted molecular weight: 18 kDa). For unpurified use at 1/500

追加情報

Is unsuitable for Flow Cyt, ICC/IF, IHC-P or IP.

ターゲット情報

機能

Essential PPlase that regulates mitosis presumably by interacting with NIMA and attenuating its mitosis-promoting activity. Displays a preference for an acidic residue N-terminal to the isomerized proline bond. Catalyzing pSer/Thr-Pro cis/trans isomerizations.

配列類似性

Contains 1 PpiC domain.

Contains 1 WW domain.

ドメイン

The WW domain is required for the interaction with STIL and KIF20B.

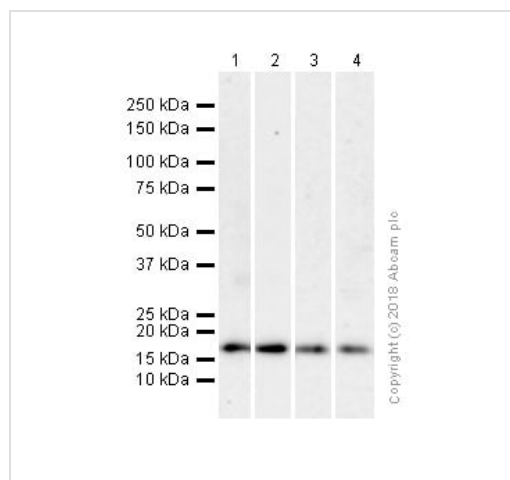
翻訳後修飾

Phosphorylated upon DNA damage, probably by ATM or ATR.

細胞内局在

Nucleus.

画像



Western blot - Anti-Pin1 antibody [EP1479Y]
(ab76309)

All lanes : Anti-Pin1 antibody [EP1479Y] (ab76309) at 1/1000 dilution (Purified)

Lane 1 : HeLa (Human cervix adenocarcinoma epithelial cell) whole cell lysate

Lane 2 : HEK-293 (Human epithelial cell line from embryonic kidney) whole cell lysate

Lane 3 : Mouse brain lysate

Lane 4 : Rat brain lysate

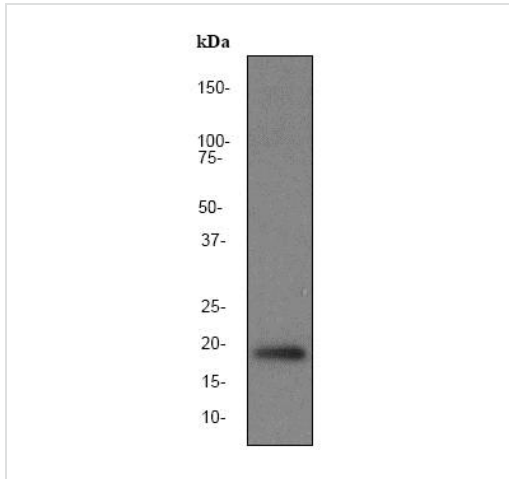
Lysates/proteins at 20 µg per lane.

Secondary

All lanes : Goat Anti-Rabbit IgG H&L (HRP) (**ab97051**) at 1/20000 dilution

Predicted band size: 18 kDa

Observed band size: 18 kDa



Anti-Pin1 antibody [EP1479Y] (ab76309) at 1/500 dilution + HEK-293 cell lysate at 10 µg

Secondary





HRP labeled goat anti-rabbit at 1/2000 dilution

Predicted band size: 18 kDa

Observed band size: 18 kDa

Western blot - Anti-Pin1 antibody [EP1479Y] (ab76309)

Why choose a recombinant antibody?

 Research with confidence Consistent and reproducible results	 Long-term and scalable supply Recombinant technology
 Success from the first experiment Confirmed specificity	 Ethical standards compliant Animal-free production

Anti-Pin1 antibody [EP1479Y] (ab76309)

Please note: All products are "FOR RESEARCH USE ONLY. NOT FOR USE IN DIAGNOSTIC PROCEDURES"

Our Abpromise to you: Quality guaranteed and expert technical support

- Replacement or refund for products not performing as stated on the datasheet
- Valid for 12 months from date of delivery
- Response to your inquiry within 24 hours
- We provide support in Chinese, English, French, German, Japanese and Spanish
- Extensive multi-media technical resources to help you
- We investigate all quality concerns to ensure our products perform to the highest standards

If the product does not perform as described on this datasheet, we will offer a refund or replacement. For full details of the Abpromise, please visit <https://www.abcam.co.jp/abpromise> or contact our technical team.

Terms and conditions

- Guarantee only valid for products bought direct from Abcam or one of our authorized distributors